

# South Portland Postal History

## Cumberland County, Maine

Last update for this page: 26 December 2024

This page is part of the Maine Postal History website — a project of the Maine Philatelic Society.  
For more information, see <http://www.mainephilatelic.org/mph>.

---

The South Portland area was first settled by Europeans in 1630. At first the area was included in the Town of Falmouth; then Cape Elizabeth was carved out of Falmouth in 1765; and finally South Portland was carved out of Cape Elizabeth on 15 March 1895. In Cape Elizabeth there had been a growing conflict between the villages on the south side of Portland Harbor and the outlying rural areas, and the separation into two separate towns -- one urban, the other rural -- provided a resolution. Less than three years later, the Town of South Portland became a City.

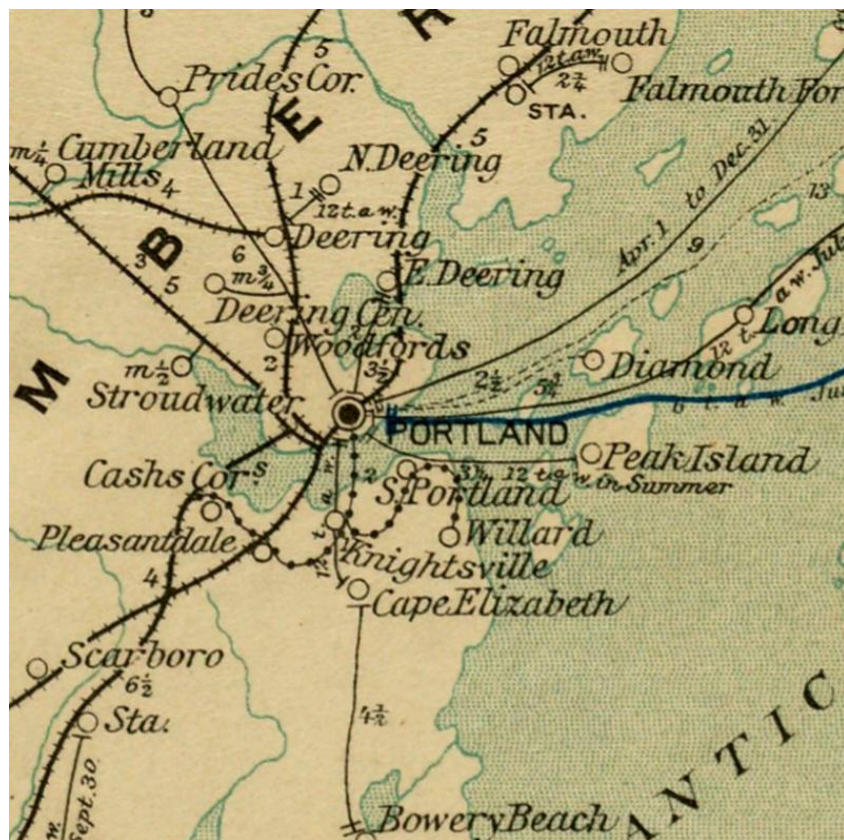
As shown in the post office nomenclature, the name South Portland had been in use for several years before the actual creation of the new town.

Ligonia, which at that time was a “company town” attached to the Portland Iron and Steel Company, was noted in the Maine Register in the early 1900s as having a post office, but we have found no postmarks or official U. S. Post Office Department records that would confirm that. It may be that the company had set up a private arrangement for residents to send and receive mail, and that was regarded by some as a post office.

Briefly, there have been thirteen official post offices in the area now known as the City of South Portland.

1. [Cape Elizabeth Depot](#) Post Office opened (as part of Cape Elizabeth) on 21 June 1853, closed briefly in summer 1869, then remained open until 27 April 1891 when it was renamed as Pleasantdale.
2. [Cashes Corner](#) Post Office opened on 19 May 1891 (as part of Cape Elizabeth) and closed on 30 June 1901.
3. [Ferry Village](#) Post Office opened on 25 July 1870 (as part of Cape Elizabeth) and closed on 5 August 1887 when it was renamed as South Portland Post Office.
4. [Knightsville](#) Post Office opened on 3 March 1875 (as part of Cape Elizabeth), closed on 30 June 1901, and changed to South Portland Sta. Portland Post Office.
5. [Pleasantdale](#) Post Office opened on 27 April 1891 (formerly Cape Elizabeth Depot) (as part of Cape Elizabeth) and closed on 1 July 1901, when Portland Sub-Sta No. 11 replaced it.
6. [South Portland](#) Post Office (formerly Ferry Village) opened on 5 August 1887 (as part of Cape Elizabeth), closed on 1 July 1901, and changed to Portland Sub-Station 12.

7. [Portland Sub—Sta./Sta/Br No. 10](#) Post Office (formerly Willard Post Office) opened on 1 July 1901 and closed in 1964/1981. It was located at 500 Cottage Street, 416, 419, 416 Preble Street, South Portland. Designation changed from Sta. to Br. 24 August 1962.
8. [Portland Sub—Sta./Sta/Br No. 11](#) Post Office (formerly Pleasantdale Post Office) opened on 1 July 1901 and closed on 1928/1935. It was located at 537, 344, 310, and 320 Summer Street, South Portland.
9. [Portland Sub-Sta./Sta./Br. No. 12 #Willard](#) (formerly South Portland Post Office) opened on 1 July 1901 and closed between 1964/1981. Located at Ferry Village; 116 Sawyer St., South Portland; designation changed from S to B, 24-Aug-1962.
10. [South Portland Sta.](#) Portland Post Office (formerly Knightsville Post Office) opened on 1 July 1901 and closed on 30 June 1908. It was changed to South Portland Bx Portland.
11. [South Portland Bx.](#) Portland Post Office (formerly South Portland Sta. Portland Post Office) opened on 1 July 1908 and is still in operation.
12. [South Portland Carrier Annex](#) Portland Post Office opened before 1993 and closed on 10 November 2010. Located at 174 Cash St., South Portland.
13. [Willard](#) Post Office opened on 9 May 1884 (as part of Cape Elizabeth) and closed on 1 July 1901, when it was replaced by Portland Sub-Sta. No. 10.



In 1897 there were five post offices in South Portland:  
Cashs Corner, Knightsville, Pleasantdale, South Portland, and Willard.

Extract from map reproduction courtesy of the Norman B. Leventhal Map and Education Center at the Boston Public Library (Source: <http://maps.bpl.org/id/16470>)

## Cape Elizabeth Depot

21 June 1853:

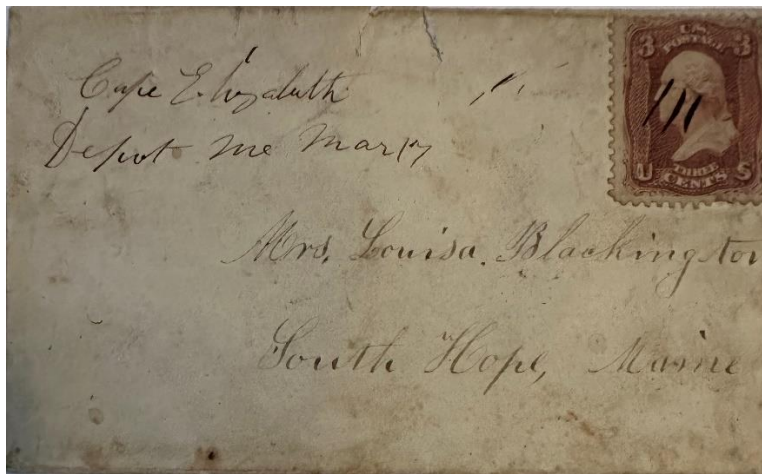
Cape Elizabeth Depot Post Office opened.

21 June 1853:

Jesse Dyer, Jr. became the Postmaster of the Cape Elizabeth Depot Post Office.

16 December 1854:

John L. Frasier became the Postmaster of the Cape Elizabeth Depot Post Office.



17 March circa 1862:

Manuscript postmark and killer.

22 February 1864:

Abner P. Hillman became the Postmaster of the Cape Elizabeth Depot Post Office.

11 December 1866:

Freeman Evans became the Postmaster of the Cape Elizabeth Depot Post Office.

23 May 1867:

Christopher Dyer became the Postmaster of the Cape Elizabeth Depot Post Office.

2 July 1867:

Lorenzo D. Reynolds became the Postmaster of the Cape Elizabeth Depot Post Office.

10 June 1869:

The Cape Elizabeth Depot Post Office closed.

26 July 1869:

The Cape Elizabeth Depot Post Office reopened.

26 July 1869:

Freeman Evans became the Postmaster of the Cape Elizabeth Depot Post Office.

18 March 1875:

Martha E. Whitney became the Postmaster of the Cape Elizabeth Depot Post Office.



4 May 1888:

The circular postmark is 27.5 mm in diameter with a four-circle target killer. A similar postmark with no killer dated 24 June 1891 (after Cape Elizabeth Post Office became Pleasantdale Post Office, which probably represents an older marking device used by Pleasantdale) is known. See Pleasantdale for a picture.

1895 Cape Elizabeth Post Office became part of South Portland.

27 April 1891:

Cape Elizabeth Depot closed and became Pleasantdale Post Office.

## Cash Corner

19 May 1891:

Cash's Corner Post Office opened (as part of Cape Elizabeth).

19 May 1891:

Henry E. Cash became the Postmaster of the Cash Corner Post Office.

15 March 1895:

Cash Corner became part of South Portland.

15 August 1895:

Andrew J. Cash became the Postmaster of the Cash Corner Post Office.



17 February 1897:

The circular postmark (used a rec'd CDS) is 30 mm in diameter with a four-circle target killer.

15 September 1899:

Henry E. Cash became the Postmaster of the Cash Corner Post Office.

25 June 1901:

Cash Corner Post Office was discontinued effective 30 June 1901 with service from Portland.

## Ferry Village

25 July 1870:

Ferry Village Post Office opened.

25 July 1870:

Thomas B. Grant became the Postmaster of the Ferry Village Post Office.

6 May 1872:

James H. Harford became the Postmaster of the Ferry Village Post Office.

24 August 1885:

Albert E. Thurrell became the Postmaster of the Ferry Village Post Office.





9 November 1886:

The circular postmark is 25 mm in diameter with a circle grid killer.

5 August 1887:

Ferry Village Post Office closed. Name changed to South Portland Post Office. The area became South Portland in 1895.

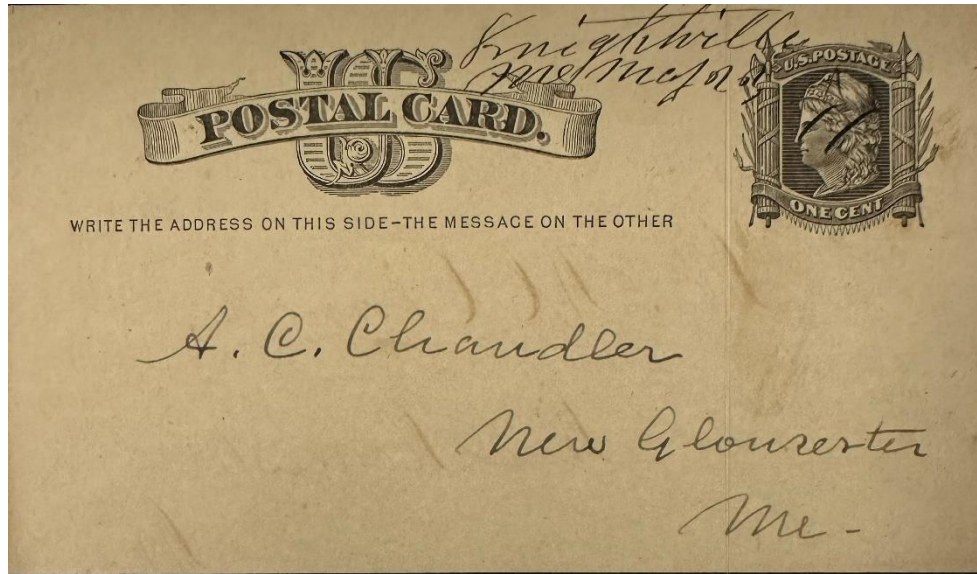
### **Knightsville** (also seen as Knightville)

3 March 1875:

Knightsville Post Office opened (as part of Cape Elizabeth).

3 March 1875:

Stephen P. Maybery became the Postmaster of the Knightsville Post Office.



23 May circa 1877:  
Manuscript postmark and killer.

15 April 1875:

William R. Dyer became the Postmaster of the Knightsville Post Office.

23 February 1876:

Joshua Brackett became the Postmaster of the Knightsville Post Office.

16 March 1880:

George C. Mountfort became the Postmaster of the Knightsville Post Office.

20 May 1881:

Levi C. Seavey became the Postmaster of the Knightsville Post Office.

15 July 1885:

George C. Mountfort became the Postmaster of the Knightsville Post Office.



5 July 1887:

The outer ring of this double-ringed CDS is 30 mm in diameter and has a fancy circle grid killer.

27 April 1889:

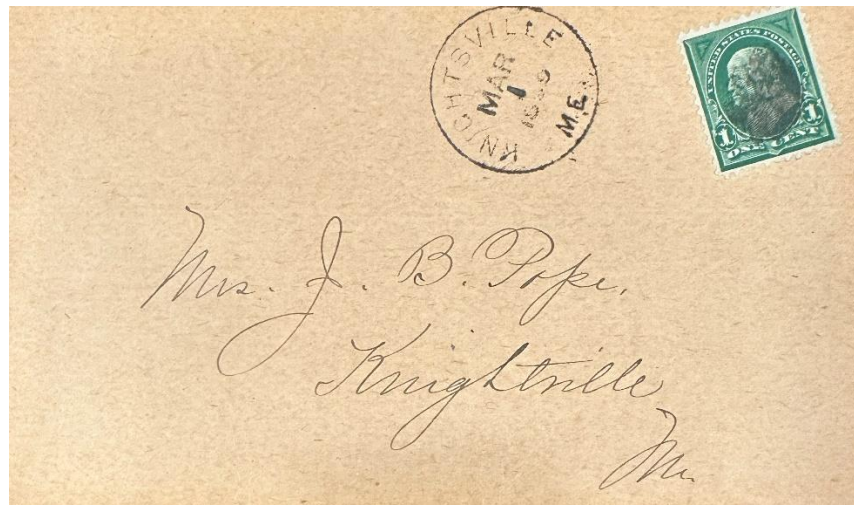
John A.S. Dyer became the Postmaster of the Knightsville Post Office.

15 March 1895:

Knightsville became part of South Portland.

8 May 1897:

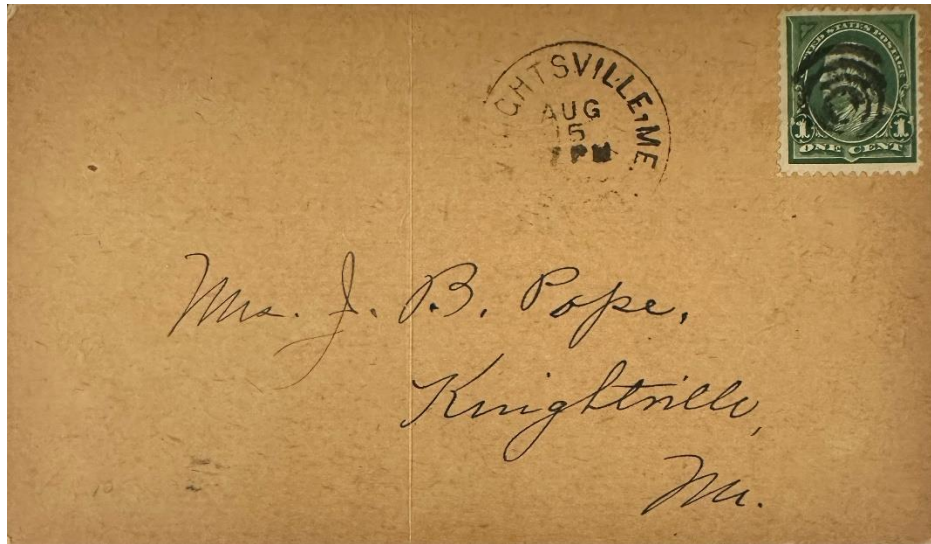
Llewellyn B. Bradford became the Postmaster of the Knightsville Post Office.



1 March 1899:

The circular postmark is 27 mm in diameter with a cork smudge killer.



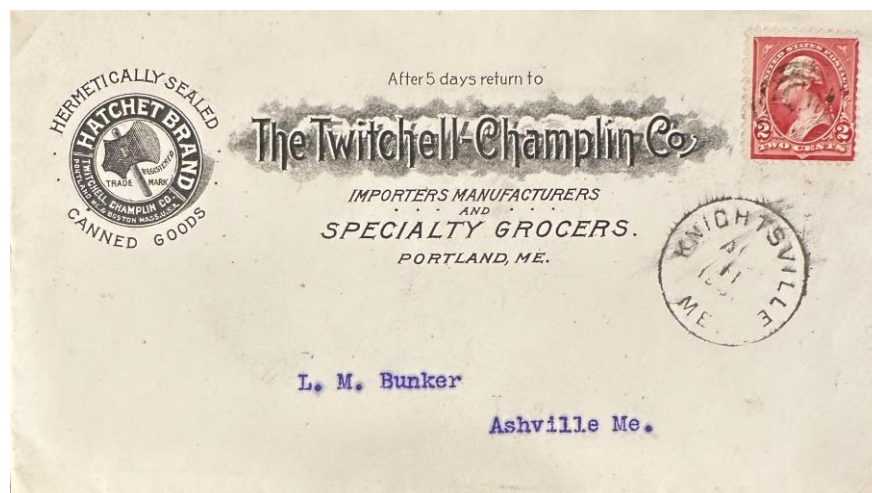


15 August 1900:

The circular postmark is 29 mm in diameter with a four-circle target killer.

18 March 1901:

Fred D. Shanning became the Postmaster of the Knightsville Post Office.



11 April 1901:

The circular postmark is 27.5 mm in diameter with a four-circle target killer.

25 June 1901:

Knightsville Post Office was discontinued effective 30 June 1901, with service from Portland.

## Pleasantdale

27 April 1891:

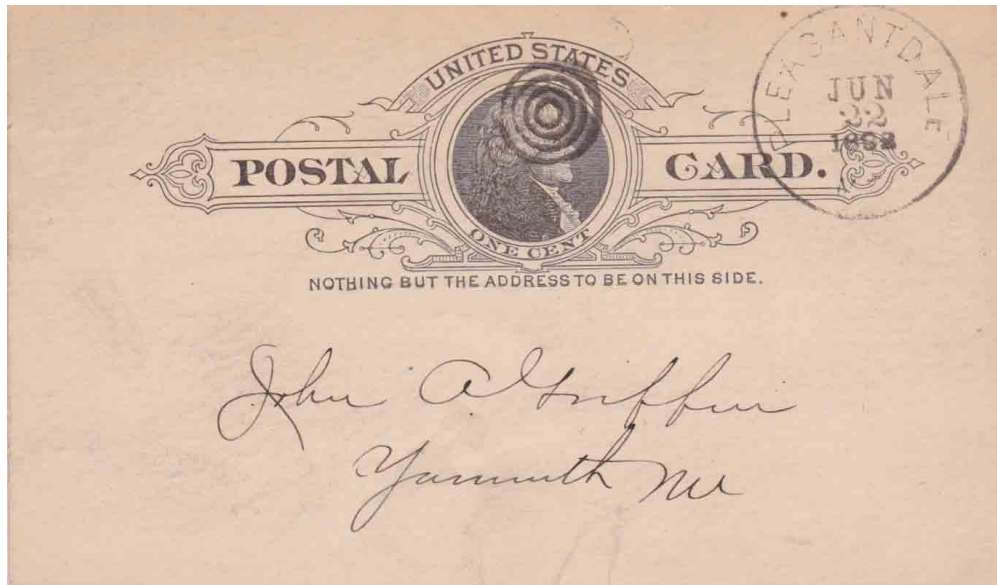
Pleasantdale Post Office (formerly Cape Elizabeth Depot Post Office) opened.

18 March 1875:

Martha E. Whitney became the Postmaster of the Cape Elizabeth Post Office.

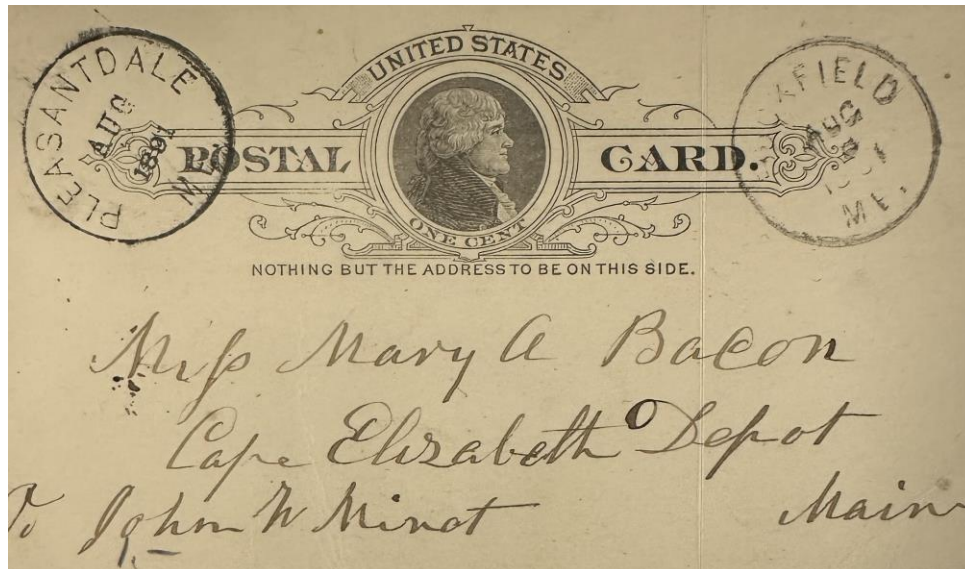
27 April 1891:

Cape Elizabeth Depot Post Office closed, and the name was changed to Pleasantdale Post Office. Martha E. Whitney remained the Postmaster during the change.



22 June 1892:

The circular postmark is 27 mm in diameter with a four-circle target killer.



8 August 1891:

The received CDS circular postmark is 28 mm in diameter with no killer.

25 June 1901:

Pleasantdale Post Office was discontinued effective 30 June 1901 and replaced by Portland Sub-Sta. No. 11.

## **South Portland**

5 August 1887:

South Portland Post Office (formerly Ferry Village) opened (as part of Cape Elizabeth).

24 August 1885:

Albert E. Thurrell became the Postmaster of the Ferry Village Post Office (as part of Cape Elizabeth.)

5 August 1887:

Ferry Village Post Office's name was changed to South Portland Post Office, and Albert E. Thurrell remained Postmaster.

9 October 1889:

John F. Merriman became the Postmaster of the South Portland Post Office.

9 October 1893:

Mrs. Fannie L. Dyer became the Postmaster of the South Portland Post Office.

25 February 1899:

John F. Merriman became the Postmaster of the South Portland Post Office.

25 June 1901:

South Portland Post Office was discontinued, effective 1 July 1901, and changed to Portland Sub-Station 12.

## **Portland Sub-Sta./Sta/Br No. 10**

1 July 1901:

Portland Sub-Sta./Sta/Br No. 10 (formerly Willard Post Office) opened on 1 July 1901. It was located at 500 Cottage Street, 416, 419, 416 Preble Street, South Portland. Designation changed from Sta. to Br. 24 August 1962.

1964/1981: (closed sometime between these dates; exact date is unknown at this time)

Portland Sub-Sta./Sta/Br No. 10 closed.

## Portland Sub—Sta./Sta./Br No. 11

1 July 1901:

Portland Sub—Sta./Sta./Br No. 11 Post Office (formerly Pleasantdale Post Office) opened. It was located at 537, 344, 320, and 320 Summer Street, South Portland.

1928/1935: (closed sometime between these dates; exact date is unknown at this time)

Portland Sub—Sta./Sta./Br No. 11 Post Office closed.

## Portland Sub-Sta./Sta./Br. No. 12

1 July 1901:

Portland Sub-Sta./Sta./Br. No. 12 (formerly South Portland Post Office) opened. Located at Ferry Village; 116 Sawyer St., South Portland; designation changed from S to B, 24-Aug-1962.

1964/1981: (closed sometime between these dates; exact date is unknown at this time)

Portland Sub-Sta./Sta./Br. No. 12 Post Office closed.

## South Portland Sta. Portland

1 July 1901:

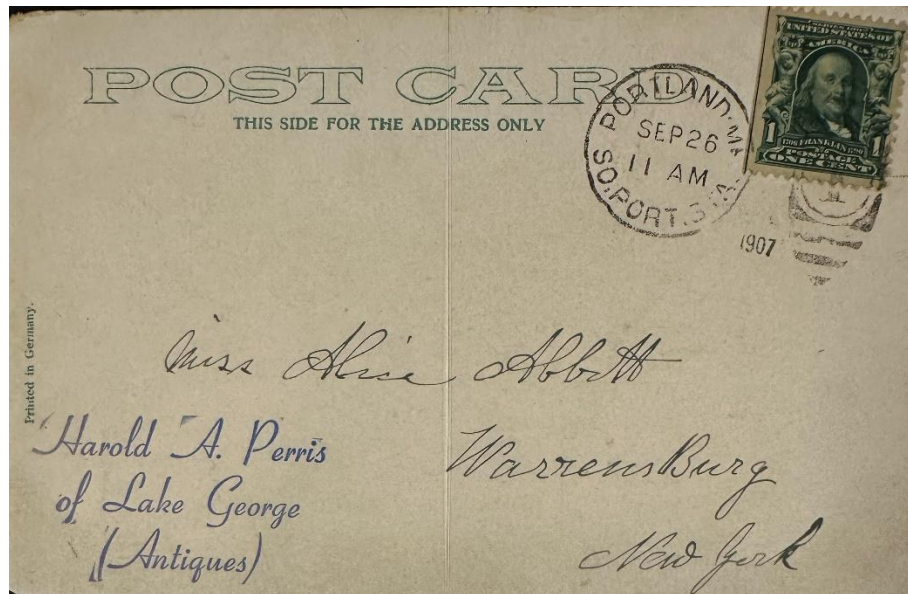
South Portland Sta. Portland Post Office (formerly Knightsville Post Office) opened.



5 May 1907:

The circular postmark is 29 mm in diameter with no killer.





26 September 1907:

The circular postmark is 25.5 mm in diameter with a six-bar Triplex/1 killer.

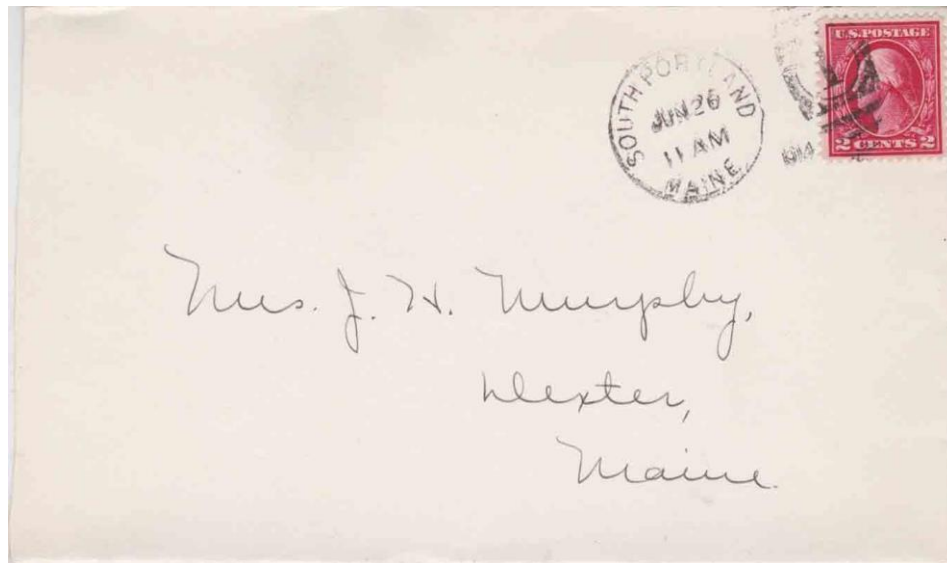
30 June 1908:

South Portland Sta. Portland Post Office was changed to South Portland Bx Portland.

### South Portland Bx. Portland

1 July 1908:

South Portland Bx. Portland Post Office (formerly South Portland Sta. Portland Post Office) opened.

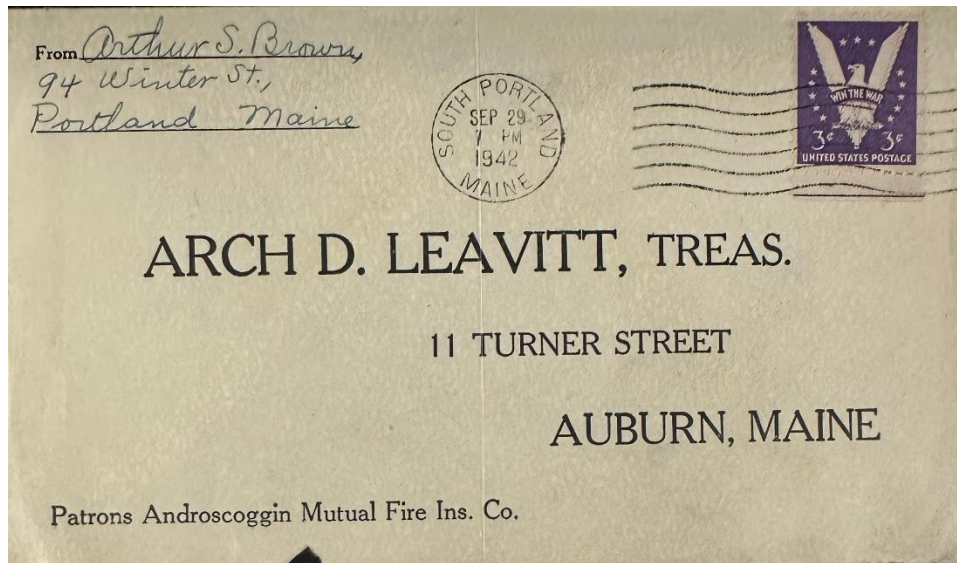


26 June 1914:

The circular postmark is 26 mm in diameter with a six-bar triplex/1 killer.

A similar postmark and killer dated 4 May 1914 is known.





29 September 1942:

The circular postmark is 20 mm in diameter with a six-wavy line Universal Machine killer.



9 October 2022

South Portland Bx Portland. Photo credit Jim Husson.

<http://www.mainephilatelic.org/mph>

27 September 2024:

South Portland Bx. Portland Post Office remains open. It is located at 15 Cottage Road, South Portland, ME 04106. GPS 43° 38' 15" N 70° 15' 07" W.

## **South Portland Carrier Annex Portland**

1993 (pre-1993, exact date is unknown)

South Portland Carrier Annex Portland Post Office opened. It was located at 174 Cash St., South Portland.

10 November 2010.

South Portland Carrier Annex Portland Post Office closed.

## **Willard**

9 May 1884:

Willard Post Office (as part of Cape Elizabeth) opened.

9 May 1884:

Edwin Cobb became the Postmaster of the Willard Post Office.

10 July 1888:

Joseph Simonton became the Postmaster of the Willard Post Office.



31 March circa 1890:

The circular postmark is 26 mm in diameter with no killer.

15 March 1895:

South Portland was incorporated.

25 June 1901:

Willard Post Office was discontinued effective 30 June 1901 and replaced by Portland Sub-Sta. No. 10.

---

Credits:

This document is based on the original web page compiled by the V. F. Thomas Co. (2021), with revisions and additions by James Husson and Brian Damien (2024).

Thank you for the contributions to this page by the Strout Family and Jim Husson.

Thank you to the Waterville Stamp Club (<https://thewatervillestampclub.com>) for helping ensure this project's continuity.

### **Sources, South Portland and Postal History:**

The Post Offices of Maine 2022, Maine Philatelic Society:

<http://www.mainephilatelic.org/books/TPOOM>

Maine Postal History Gateway at Maine Philatelic Society:

<http://www.mainephilatelic.org/mph>

National Archives Catalog: Postmaster Appointments for Cumberland County, Maine

<https://catalog.archives.gov/id/78746483>

Postmaster Finder by City:

<https://about.usps.com/who/profile/history/postmaster-finder/postmasters-by-city.htm>

The Digitised U. S. Postal Bulletins and PL&Rs 1880—2013

<http://www.uspostalbulletins.com/>

Atlas of Cumberland County, Maine 1871 (published 24 years before South Portland was carved out of Cape Elizabeth)

Cape Elizabeth [map] [https://digitalmaine.com/atlas\\_cumberland\\_1871/23/](https://digitalmaine.com/atlas_cumberland_1871/23/)

Buzzell's Hill, Knightville, Ferry Village, Point Village [map]

[https://digitalmaine.com/atlas\\_cumberland\\_1871/26/](https://digitalmaine.com/atlas_cumberland_1871/26/)

Cushings Point [map] [https://digitalmaine.com/atlas\\_cumberland\\_1871/25/](https://digitalmaine.com/atlas_cumberland_1871/25/)

Ligonia, Turners Island [map] [https://digitalmaine.com/atlas\\_cumberland\\_1871/24/](https://digitalmaine.com/atlas_cumberland_1871/24/)

<http://www.mainephilatelic.org/mph>

“South Portland,” article in Wikipedia [https://en.wikipedia.org/wiki/South\\_Portland,\\_Maine](https://en.wikipedia.org/wiki/South_Portland,_Maine)

“South Portland,” article in Maine: An Encyclopedia <https://maineanencyclopedia.com/south-portland/>

South Portland Historical Society: <https://sphistory.org>

Counties, Cities, Towns and Plantations of Maine: A Handbook of Incorporations, Dissolutions and Boundary Changes. Electronic document from Maine State Archives:  
[https://digitalmaine.com/arc\\_publications/11/](https://digitalmaine.com/arc_publications/11/)

Additional material, including links to official records of postmaster appointments, can be found at Research Resources on Maine Postal History: <http://www.mainephilatelic.org/books/post-office-sources.pdf>

.

### **Sources, Postmarks**

Anderson, Gary. Maine Doane cancels; from the Doane Cancel website,  
[http://www.doanecancel.com/maine\\_doanes.html](http://www.doanecancel.com/maine_doanes.html)  
<http://www.doanecancel.com/doane.html>

Sanders, Christine, The 4-Bar Postmark of the USPS, PMCC Bulletin Reprinted Article, Original Publication Date: June, July & December 2012.  
[http://www.postmarks.org/resources/PMCC\\_FourBarCancelsUSPS.pdf](http://www.postmarks.org/resources/PMCC_FourBarCancelsUSPS.pdf)

U. S. Cancel Finder: Find a Machine Cancel by Style on the Swanson Group website:  
<http://swansongrp.com/postal/about/index.html>