

# Industry Postal History

## Franklin County, Maine

Last update for this page: 04/09/2025

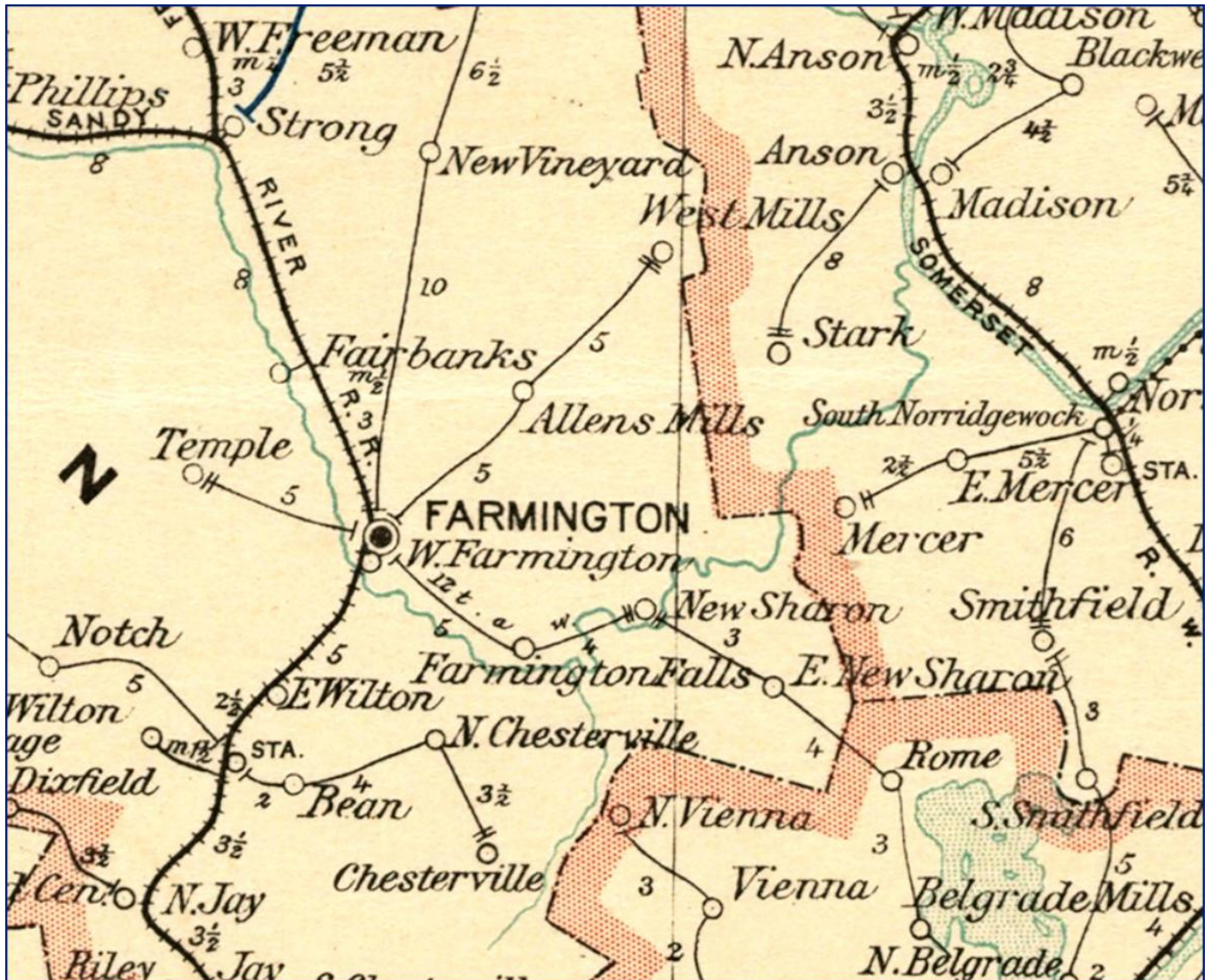
This page is part of the Maine Postal History website—a project of the Maine Philatelic Society.  
For more information, see <https://www.mainephilatelic.org/mph>.

---

Industry was organized in 1799 as Industry Plantation, together with the "River Settlement" (now Mercer). It was incorporated on 20 June 1803. From 1813 to 1844, it annexed land from New Sharon, New Vineyard, Starks, and Anson. In 1850 and 1852, it ceded land to Farmington and New Sharon, respectively. Industry was part of Somerset County until 9 May 1838.

Briefly, there were ten post offices in Industry:

1. [Allen's Mills](#) Post Office (formerly Industry Post Office) opened on 24 October 1879 and closed in 1894. The name was changed to Allens Mills Post Office.
2. [Allens Mills](#) Post Office (formerly Allen's Mills Post Office) opened in 1894 and closed on 31 December 1901.
3. [Allens Mills](#) Post Office reopened on 19 February 1904 and closed on 14 August 1915.
4. Industry Post Office opened on 28 October 1816 as part of Somerset County. It closed as part of Somerset County on 9 May 1838.
5. [Industry](#) Post Office opened as part of Franklin County on 9 May 1838 and closed on 24 October 1879. The name was changed to Allen's Mills Post Office.
6. [North Industry](#) Post Office (formerly West Industry Post Office) opened on 8 June 1847 and closed on 8 June 1855.
7. [West Industry](#) Post Office (formerly New Vineyard (1) Post Office) opened on 14 May 1847 and closed on 8 June 1847. This Post Office never opened and was changed to North Industry Post Office.
8. [West's Mills](#) Post Office opened on 22 March 1828 as part of Somerset County and closed on 9 May 1838 when it became part of Franklin County.
9. [West's Mills](#) Post Office (formerly part of Somerset County) opened as part of Franklin County on 9 May 1838 and closed on 3 April 1893. The name was changed to West Mills.
10. [West Mills](#) Post Office (formerly West's Mills Post Office) opened on 3 April 1893 and closed on 30 July 1932.

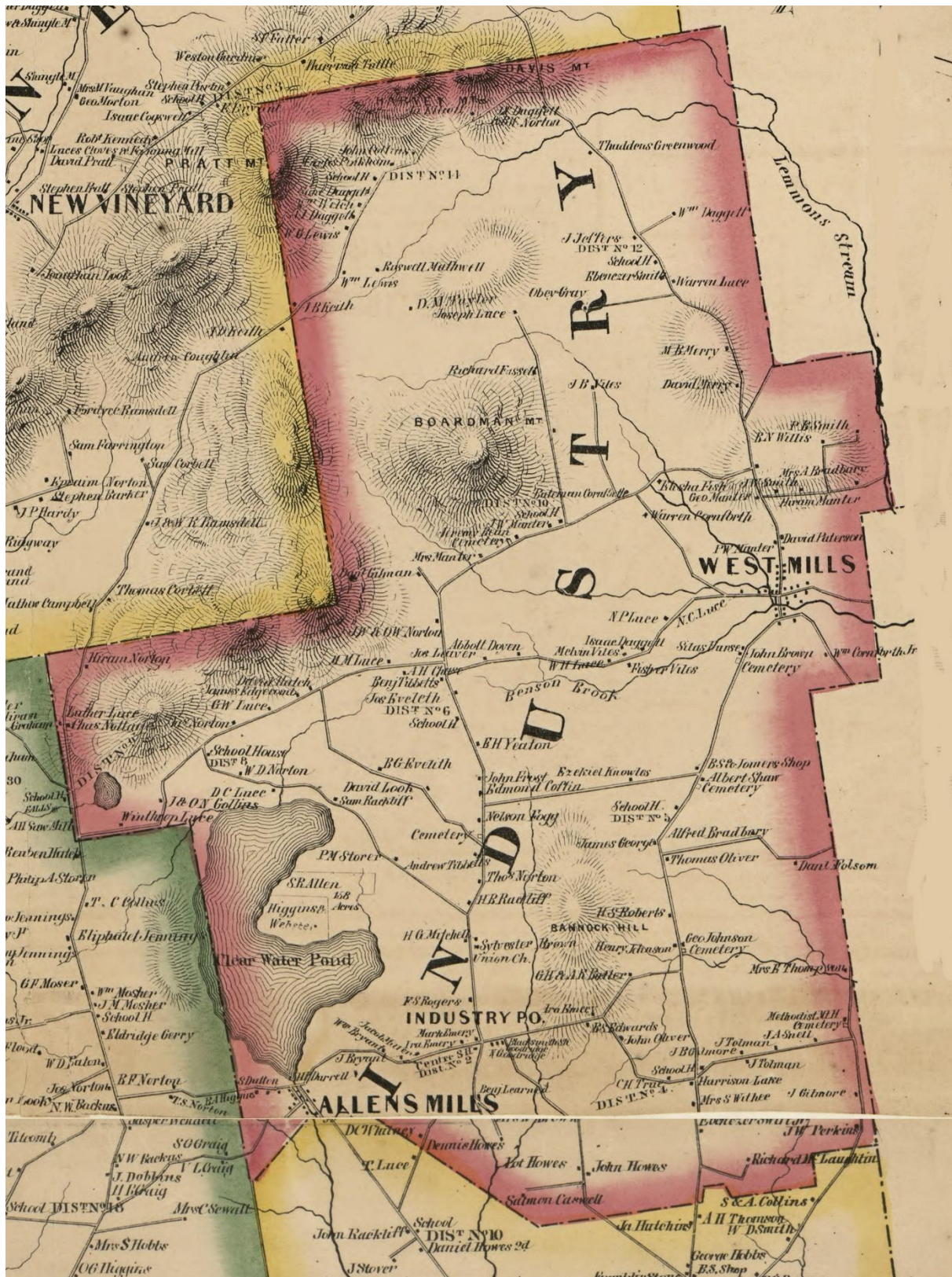


On the Post Route Map of the State of Maine, 1897, we find two post offices in operation in the Town of Industry: Allens Mills and West Mills.

Detail from map courtesy of the Norman B. Leventhal Map and Education Center at the Boston Public Library.

<https://collections.leventhalmap.org/search/commonwealth:cj82kk95k>





Detail from Topographical Map of Franklin County, H. F. Walling, New York, 1861  
For free download from Library of Congress: <http://hdl.loc.gov/loc.gmd/g3733f.la000267>



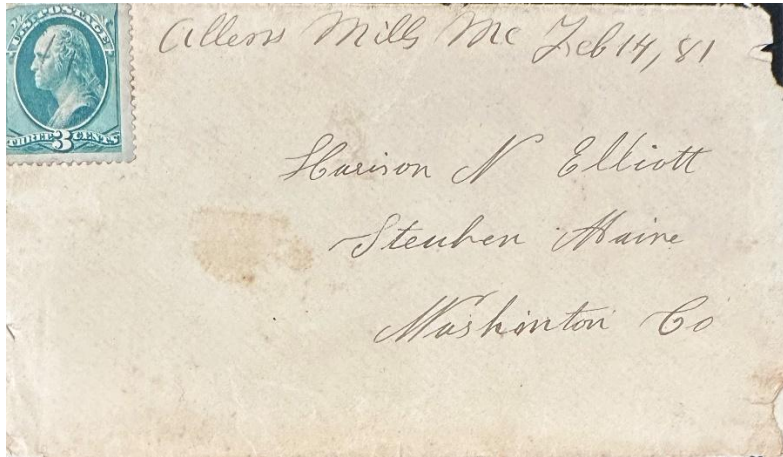
## Allen's Mills

24 October 1879:

Allen's Mills Post Office (formerly Industry Post Office) opened.

24 October 1879:

Moses M. Luce became the Postmaster of the Allen's Mills Post Office.



14 February 1881:  
Manuscript postmark and killer.

13 September 1881:

Herbert M. Luce became the Postmaster of the Allen's Mills Post Office.

28 September 1881:

Herbert B. Luce became the Postmaster of the Allen's Mills Post Office.



27 August 1883:  
The circular postmark is 27.5 mm in diameter with a cork smudge killer.

17 August 1889:

Elbridge H. Rackliff became the Postmaster of the Allen's Mills Post Office.

23 May 1893:

Herbert B. Luce became the Postmaster of the Allen's Mills Post Office.

1894:

Allen's Mills Post Office closed, and the name changed to Allens Mills.

## **Allens Mills**

1894:

Allens Mills Post Office (formerly Allen's Mill Post Office) opened.

23 May 1893:

Herbert B. Luce became the Postmaster of the Allen's Mills Post Office and remained as Postmaster when Allen's Mills Post Office name was changed to Allen Mills Post Office.

20 October 1896:

Rose F. Spinney became the Postmaster of the Allens Mills Post Office.

19 December 1898:

John T. Mason became the Postmaster of the Allens Mills Post Office.

31 December 1901:

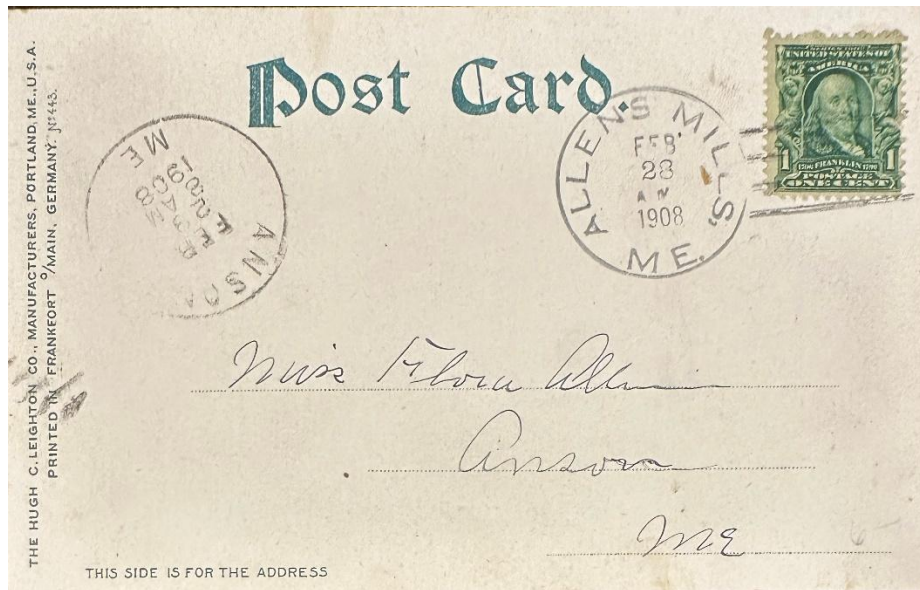
Allens Mills Post Office closed.

19 February 1904:

Allens Mills Post Office reopened.

19 February 1904:

Mary A. Rackliff became the Postmaster of the Allens Mills Post Office.



28 February 1908:

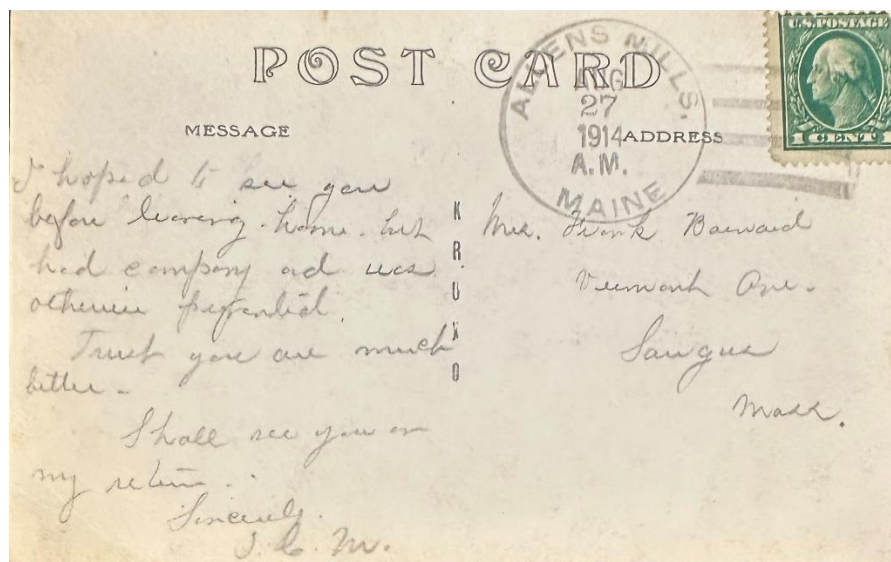
The circular postmark is 28.5 with a Doane 2/1 killer.

2 December 1909:

LeRoy Litchfield became the Postmaster of the Allens Mills Post Office.

7 August 1912:

E. Fritz Day became the Postmaster of the Allens Mills Post Office.



27 August 1914:

The circular postmark is 32.5 mm in diameter with a four-bar B killer.

14 August 1915:

Allens Mills Post Office closed service from Farmington.

## Industry

28 October 1816:

Industry Post Office opened while part of Somerset County.

28 October 1816:

Jonathan Goodridge became the Postmaster of the Industry Post Office.

16 June 1821:

James Davis

9 May 1838:

Industry Post Office becomes part of Franklin County. James Davis remains as Postmaster during this change.

30 November 1839:

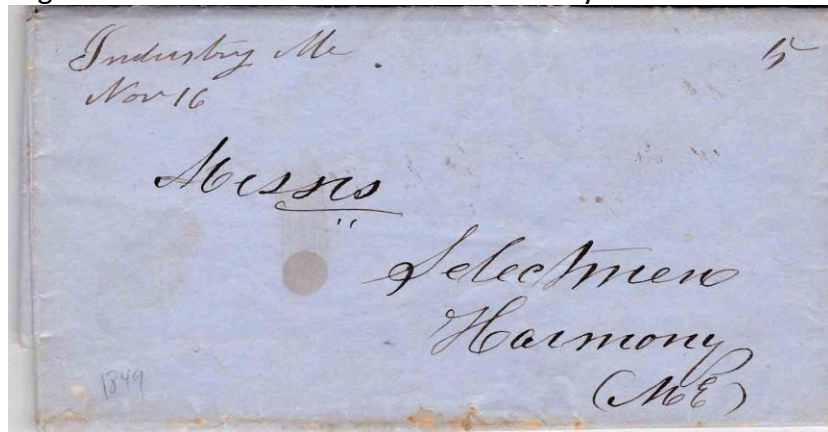
Nathan Goodridge became the Postmaster of the Industry Post Office.

29 June 1841:

Ira Emery became the Postmaster of the Industry Post Office.

29 July 1845:

Nathan Goodridge became the Postmaster of the Industry Post Office.



16 November 1849:  
Manuscript Postmark

15 December 1856:

Mark Emery became the Postmaster of the Industry Post Office.

6 March 1863:

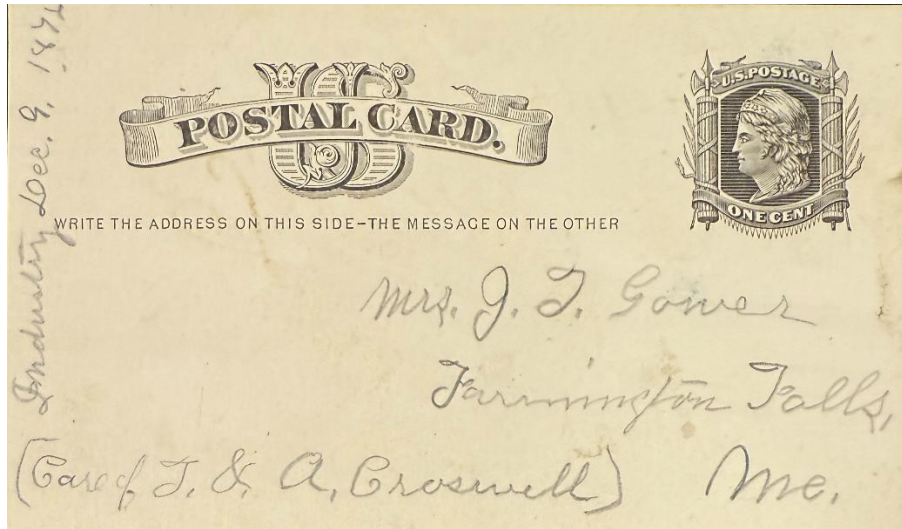
Samuel R. Allen became the Postmaster of the Industry Post Office.

7 October 1864:

Nathan Goodridge became the Postmaster of the Industry Post Office.

27 September 1871:

Hovey Thomas became the Postmaster of the Industry Post Office.



9 December 1872:  
Manuscript postmark.

24 October 1879:

Industry Post Office closed and was renamed Allen's Mills Post Office.

## North Industry

8 June 1847:

North Industry Post Office (formerly West Industry Post Office) opened.

26 July 1844:

Isaac Daggett became and remained the Postmaster of New Vineyard (1) Post Office, which became West Industry Post Office on 14 May 1847 and North Industry Post Office on 8 June 1847.

8 June 1855:

North Industry Post Office closed.

## West Industry

14 May 1847:

West Industry Post Office (formerly New Vineyard (1) Post Office) opened.



8 June 1847:

West Industry Post Office closed. This Post Office never opened and was changed to North Industry Post Office.

## **West's Mills**

22 March 1828:

West's Mills Post Office opened as part of Somerset County.

22 March 1828:

Peter West became the Postmaster of West's Mills Post Office.

9 May 1838:

West's Mills Post Office becomes part of Franklin County. Peter West remains as the Postmaster.

19 October 1839:

John West became the Postmaster of West's Mills Post Office.

10 July 1841:

Jesse Thing became the Postmaster of West's Mills Post Office.

24 July 1845:

John W. Manter became the Postmaster of West's Mills Post Office.

27 April 1849:

Jesse Thing became the Postmaster of West's Mills Post Office.

31 May 1852:

Cyrus N. Hutchins became the Postmaster of West's Mills Post Office.

24 February 1853:

Benjamin N. Willis became the Postmaster of West's Mills Post Office.

11 January 1854:

Peter W. Willis became the Postmaster of West's Mills Post Office.

10 November 1854:

Peter W. Butler became the Postmaster of West's Mills Post Office.

3 August 1861:

Elbridge H. Rackliff became the Postmaster of West's Mills Post Office.

26 April 1864:

Warren N. Willis became the Postmaster of West's Mills Post Office.

15 January 1866:

Asaph Boyden became the Postmaster of West's Mills Post Office.

7 November 1879:

Alonzo Norton became the Postmaster of West's Mills Post Office.

1 March 1886:

Charles M. Hilton became the Postmaster of West's Mills Post Office.

16 May 1889:

Harrison Daggett became the Postmaster of West's Mills Post Office.

3 April 1893:

West's Mills Post Office closed, and the name was changed to West Mills Post Office.

## **West Mills**

3 April 1893:

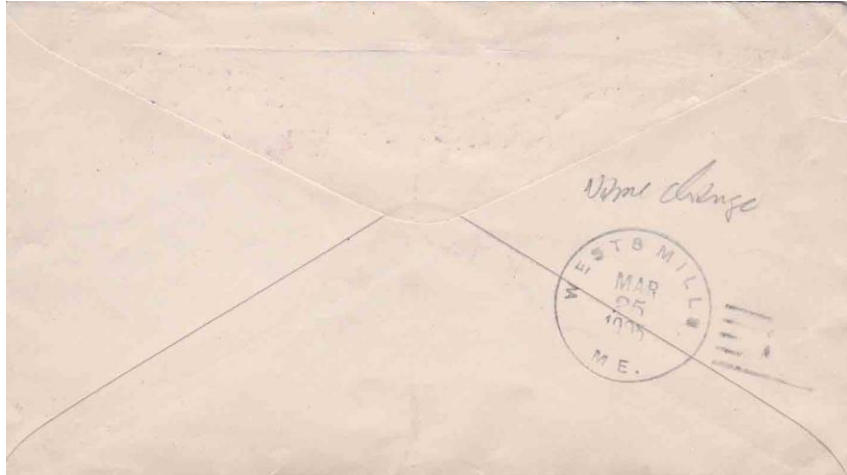
Charles M. Hilton became the Post Master of the West Mills Post Office.

22 April 1897:

Frank B. Eveleth became the Post Master of the West Mills Post Office.

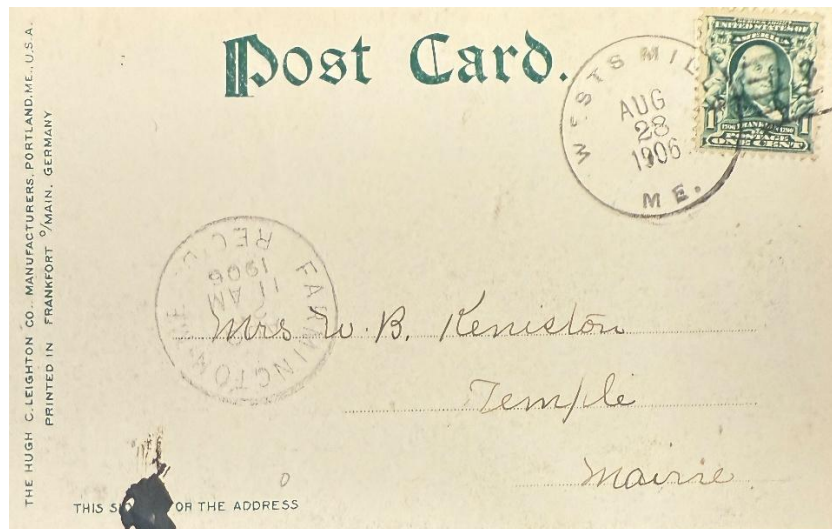
28 April 1903:

Charles M. Hilton became the Post Master of the West Mills Post Office.



25 March 1905:

The circular received postmark is 30 mm in diameter with a Doane 1/1 killer. Note: Even after the post office's name changed, this cancellation still has Wests, not West.



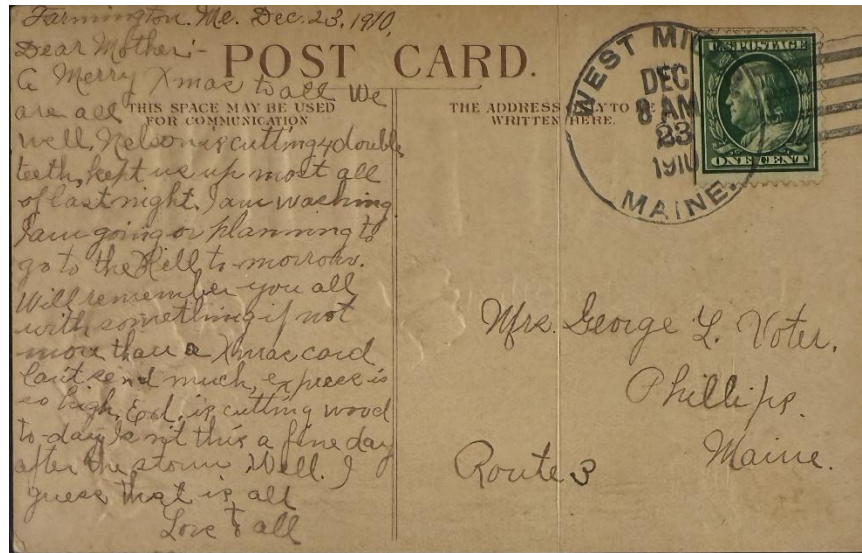
28 August 1906:

The circular postmark is 30 mm in diameter with a Doane 1/2 killer. Note: Even after the post office's name changed, this cancellation still has Wests, not West.

5 September 1907:

Clarence C. Campbell became the Post Master of the West Mills Post Office.





23 December 1910:

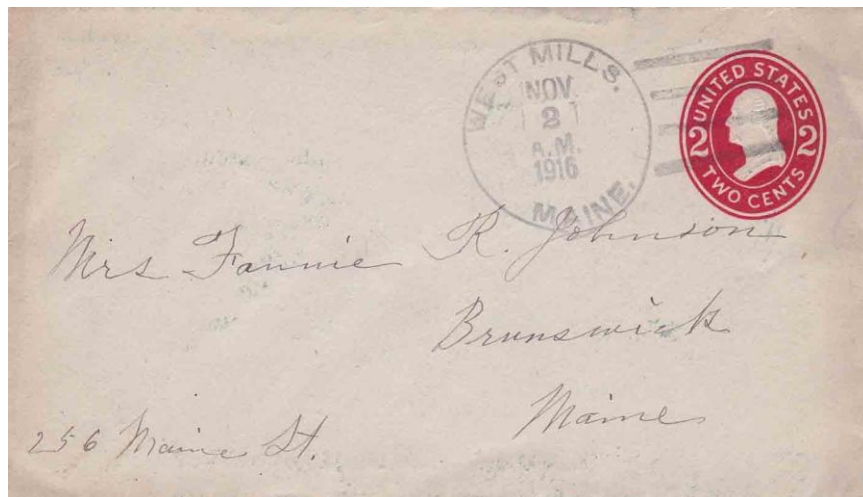
The circular postmark is 32 mm in diameter with a four-bar A/2 killer. A similar postmark dated 23 December 1920 is known.

14 March 1914:

Lydia A. Grant became the Post Master of the West Mills Post Office.

10 April 1915:

Frank H. Eveleth became the Post Master of the West Mills Post Office.



3 November 1916:

The circular postmark is 33 mm with a four-bar B killer.

20 November 1917:

David W. McKinnon became the Post Master of the West Mills Post Office.

8 April 1920:

Henry Oliver became the Post Master of the West Mills Post Office.

3 March 1922:

James L. Gray became the Post Master of the West Mills Post Office.

20 November 1926:

Olgerto T. Coffins became the Post Master of the West Mills Post Office.

3 October 1917:

Lottie J. Collins became the Post Master of the West Mills Post Office.

13 July 1932:

West Mills Post Office closed effective 30 July 1932 with service from Farmington.

---

Credits:

This document is based on the original web page compiled by the V. F. Thomas Co. (2021), with revisions and additions by James Husson and Brian Damien (2025).

Thank you for the contributions to this page by the Strout Family, and Jim Husson.

Thank you to the Waterville Stamp Club (<https://thewatervillestampclub.com>) for helping ensure this project's continuity.

**Sources, Postal History:**

Maine Postal History Gateway at Maine Philatelic Society:

<https://www.mainephilatelic.org/mph>

The Post Offices of Maine 2022, Maine Philatelic Society:

<http://www.mainephilatelic.org/books/TPOOM>

### Postmaster Appointments

>>>When searching Postmaster Appointment records, note that Industry was in Somerset County until 9 May 1838, when it became part of Franklin County. *But...appointments for the period up to 1832 are in files that are **not organized by county**.* For help finding those earlier appointments (as well as the later ones) see the Finding Aid for U. S. Postmaster Appointment Records, 1789-Present, <https://www.mainephilatelic.org/pma-findingaid.pdf>

For appointments 1832 and later:

Somerset County, Maine: (for appointments for the post offices of Industry, up to 1838)  
<https://catalog.archives.gov/id/78746960>

Franklin County, Maine: (for appointments for the post offices of Industry, 1838-1971)  
<https://catalog.archives.gov/id/78746541>

Postmaster Finder by City:

<https://about.usps.com/who/profile/history/postmaster-finder/postmasters-by-city.htm>

Records of the U. S. Post Office Department: Reports of Site Locations; Franklin, Hancock Counties, Maine <https://catalog.archives.gov/id/68415820>

Allens Mills: <https://catalog.archives.gov/id/68415820?objectPage=11> and three following pages

West Mills: <https://catalog.archives.gov/id/68415820?objectPage=321> and following page

West Mills: <https://catalog.archives.gov/id/68415820?objectPage=318> and three following pages

The Digitised U. S. Postal Bulletins and PL&Rs 1880—2013

<http://www.uspostalbulletins.com/>

Additional material can be found at Research Resources on Maine Postal History:

<http://www.mainephilatelic.org/books/post-office-sources.pdf>

### Sources, Industry History

“Industry,” article on pp. 409-411 in Maine Place Names and the Peopling of Its Towns, by Ava Harriet Chadbourne. Bangor: Furbish Roberts, 1955.

<https://archive.org/details/maineplacenamesp00chad>



“Post Offices, Reminiscences...” part of a chapter on pp. 226-234 in A History of the Town of Industry, Franklin County, Maine, from the Earliest Settlement in 1787 down to the Present Time, by William Collins Hatch, 1893.

<https://archive.org/details/historyoftownofi00hac/page/226/mode/1up>

History, in Town of Industry website:

<https://www.townofindustry.com/history>

“Industry,” article in Maine: An Encyclopedia

<https://maineencyclopedia.com/industry>

Topographical Map of Franklin County, Maine, by H. F. Walling, 1861.

<http://hdl.loc.gov/loc.gmd/g3733f.la000267> (The Industry portion of this map is reproduced on page 3 of this document.)

U. S. Geological Survey Topographic Quadrangle Map, Farmington, Maine (shows southern part of Industry)

[https://ngmdb.usgs.gov/ht-bin/tv\\_browse.pl?id=be4050a2cdf0b4d28ced3cfcb49f32ba](https://ngmdb.usgs.gov/ht-bin/tv_browse.pl?id=be4050a2cdf0b4d28ced3cfcb49f32ba)

U. S. Geological Survey Topographic Quadrangle Map, Kingfield, Maine (shows northern part of Industry)

[https://ngmdb.usgs.gov/ht-bin/tv\\_browse.pl?id=79789432f3f6ea007a48d5d2d4cadbee](https://ngmdb.usgs.gov/ht-bin/tv_browse.pl?id=79789432f3f6ea007a48d5d2d4cadbee)

Counties, Cities, Towns and Plantations of Maine: A Handbook of Incorporations, Dissolutions and Boundary Changes. [https://digitalmaine.com/arc\\_publications/11/](https://digitalmaine.com/arc_publications/11/)