

Dallas Plantation Postal History

Franklin County, Maine

Last update for this page: 17 February 2025

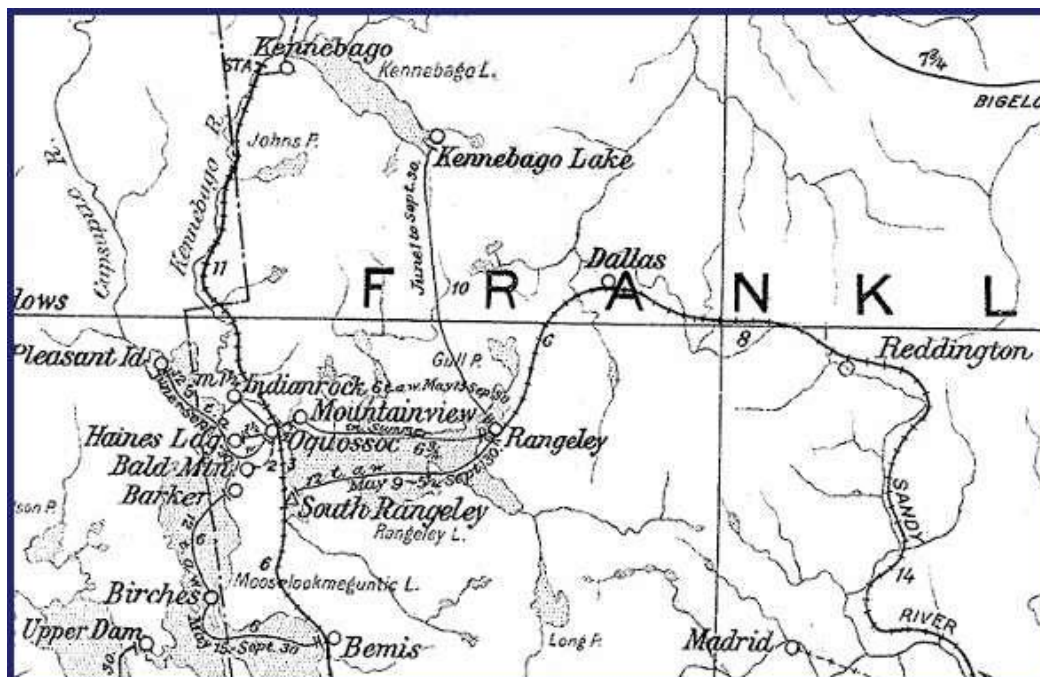
This page is part of the Maine Postal History website—a project of the Maine Philatelic Society.
For more information, see <https://www.mainephilatelic.org/mph>

Dallas (Township 2 Range 2) is a Franklin County plantation that borders the eastern side of the Town of Rangeley. The developed area of Rangeley is right on the town line with Dallas.

Until the 1850s the name Dallas Plantation referred to a larger area that contained a total of four townships. The current Dallas Plantation, including only one township, has been legally constituted since 1895.

Briefly, there were three post offices in Dallas Plantation:

1. [Dallas](#) Post Office opened on 5 January 1910 and closed on 15 June 1926.
2. [Loon Lake](#) Post Office opened on 14 September 1915 and closed on 15 November 1934.
3. [Saddleback](#) Post Office opened on 4 August 1916 and closed on 15 November 1929.



According to the Post Route Map In 1914, there was one post office in Dallas Plantation: Dallas.

<https://www.mainephilatelic.org/PostRouteMaps/MainePostRouteMap1914.pdf>



Topographic maps from the 1930s help to reveal the locations of the Loon Lake and Saddleback Post Offices. The Loon Lake Post Office was established to serve the clientele of York Camps, located there, near the northwest corner of Dallas Plantation. Similarly, the Saddleback Post Office served the clients of the Saddleback Lake Camps, down near the southeast corner of the plantation. (The top of Saddleback Mountain is just off the southeast edge of Dallas Plantation.)

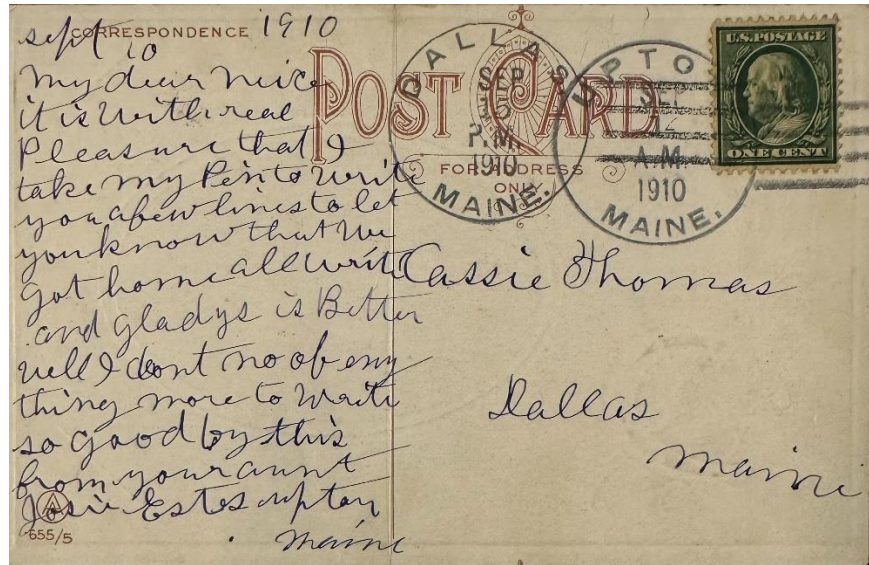
Dallas

5 January 1910:

Dallas Post Office opened.

5 January 1910:

Hattie M. Getchell became the Postmaster of the Dallas Post Office.



15 September 1910:

The circular postmark is 32 mm in diameter with a four-bar A/2 killer.

A similar postmark and killer dated 3 August 1916 is known.

7 June 1918:

William C. Dickney became the Postmaster of the Dallas Post Office.

15 June 1926:

Dallas Post Office closed with service from Rangeley.

Loon Lake

14 September 1915:

Loon Lake Post Office opened. The reports available in the Post Office Department Site Location documents on the National Archives website indicate that the post office was located at York Camps.

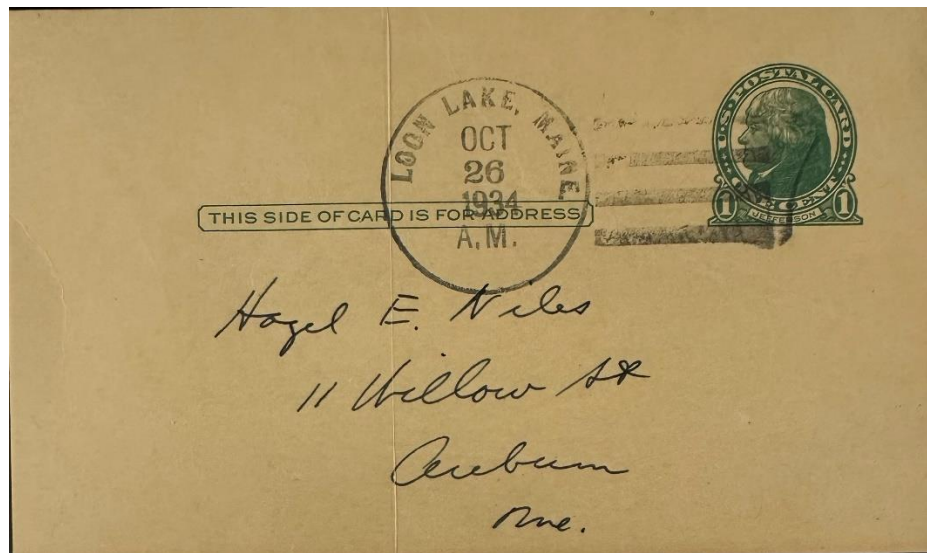
14 September 1915:

J. Lewis York became the Postmaster of the Loon Lake Post Office.



6 April 1920:

The circular postmark is 33.5 mm in diameter with a four-bar A/2 killer.



26 October 1934:

The circular postmark is 31.5 mm in diameter with a four-bar E killer. A similar postmark and killer dated 26 October 1934: Both were canceled after the official closure of the post office but before the effective closure.

16 October 1934:

Loon Lake Post Office closed effective 15 November 1934 with service from Rangeley.

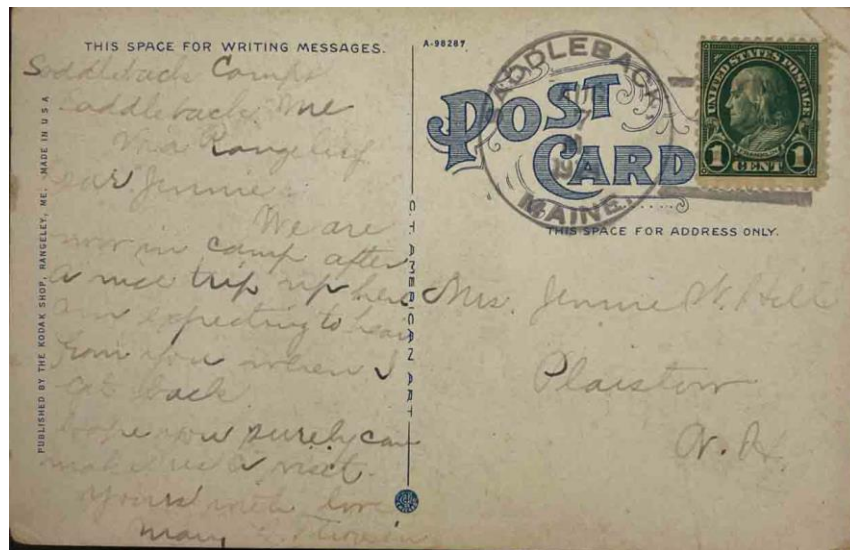
Saddleback

4 August 1916:

Saddleback Post Office opened. Reports available in the Post Office Department Site Location documents on the National Archives website indicate that the post office was located at Saddleback Lake Camps.

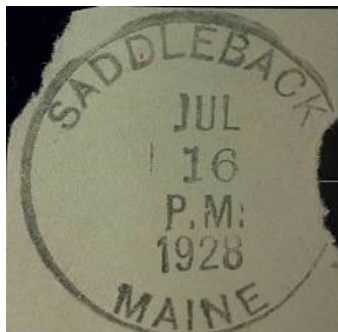
4 August 1916:

Hermon S. Blackwell became the Postmaster of the Saddleback Post Office.



7 August 1924:

The circular postmark is 32 mm in diameter with a four-bar B killer.



16 July 1928:

15 November 1929:

Saddleback Post Office closed with service from Rangeley.

Credits:

This document is based on the original web page compiled by the V. F. Thomas Co. (2021), with revisions and additions by James Husson and Brian Damien (2024).

Thank you for the contributions to this page by Jim Husson.

Thank you to the Waterville Stamp Club (<https://thewatervillestampclub.com>) for helping ensure this project's continuity.

Sources, Postal History:

Maine Postal History Gateway at Maine Philatelic Society:
<https://www.mainephilatelic.org/mph>

The Post Offices of Maine 2022, Maine Philatelic Society:
<https://www.mainephilatelic.org/books/TPOOM>

National Archives Catalog: Postmaster Appointments for Franklin County, Maine
<https://catalog.archives.gov/id/78746541>

National Archives Catalog: Reports of Site Location, Franklin County, Maine
Link to image of application to open post office at Dallas
<https://catalog.archives.gov/id/68415820?objectPage=69> (and four following pages)

Link to image of application to open post office at Loon Lake
<https://catalog.archives.gov/id/68415820?objectPage=153> (and four following pages)

Link to image of application to open post office at Saddleback
<https://catalog.archives.gov/id/68415820?objectPage=250> (and four following pages)

The Digitised U. S. Postal Bulletins and PL&Rs 1880—2013
<http://www.uspostalbulletins.com/>

Additional material, including links to official records of postmaster appointments, can be found at Research Resources on Maine Postal History: <https://www.mainephilatelic.org/books/post-office-sources.pdf>

Sources, Dallas Plantation History

“Dallas Plantation,” article in Maine, an Encyclopedia
<https://maineanencyclopedia.com/dallas-plantation/>

Dallas Plantation website: <https://dallasplantation.com/>

Counties, Cities, Towns and Plantations of Maine: A Handbook of Incorporations, Dissolutions and Boundary Changes. https://digitalmaine.com/arc_publications/11/

U. S. Geological Survey Topographic Quadrangle Map, Kennebago Lake, Maine, 1935.

https://ngmdb.usgs.gov/ht-bin/tv_browse.pl?id=125f808e9adecd0785d017344739ff8d

U. S. Geological Survey Topographic Quadrangle Map, Rangeley, Maine, 1933.

https://ngmdb.usgs.gov/ht-bin/tv_browse.pl?id=1749de9be7b0682e719881e955ac35e2

Sources, Postmarks

Sanders, Christine, The 4-Bar Postmark of the USPS, PMCC Bulletin Reprinted Article, Original Publication Date: June, July & December 2012.

http://www.postmarks.org/resources/PMCC_FourBarCancelsUSPS.pdf