

Chesterville Postal History

Franklin County, Maine

Last update for this page: 4 February 2025

This page is part of the Maine Postal History website—a project of the Maine Philatelic Society.
For more information, see <https://www.mainephilatelic.org/mph>.

Originally named Chester Township, the town of Chesterville was incorporated in 1802. There are varying stories about the origin of the town's name, including one claim that it refers to a favorite patriotic Congregational Church hymn titled "Chester" from the Revolutionary War era. Chesterville expanded its boundaries in 1811 and 1847, annexing land from Wilton and Vienna. Chesterville is not to be confused with the Maine town named Chester (incorporated 1834), just north of Lincoln in Penobscot County.

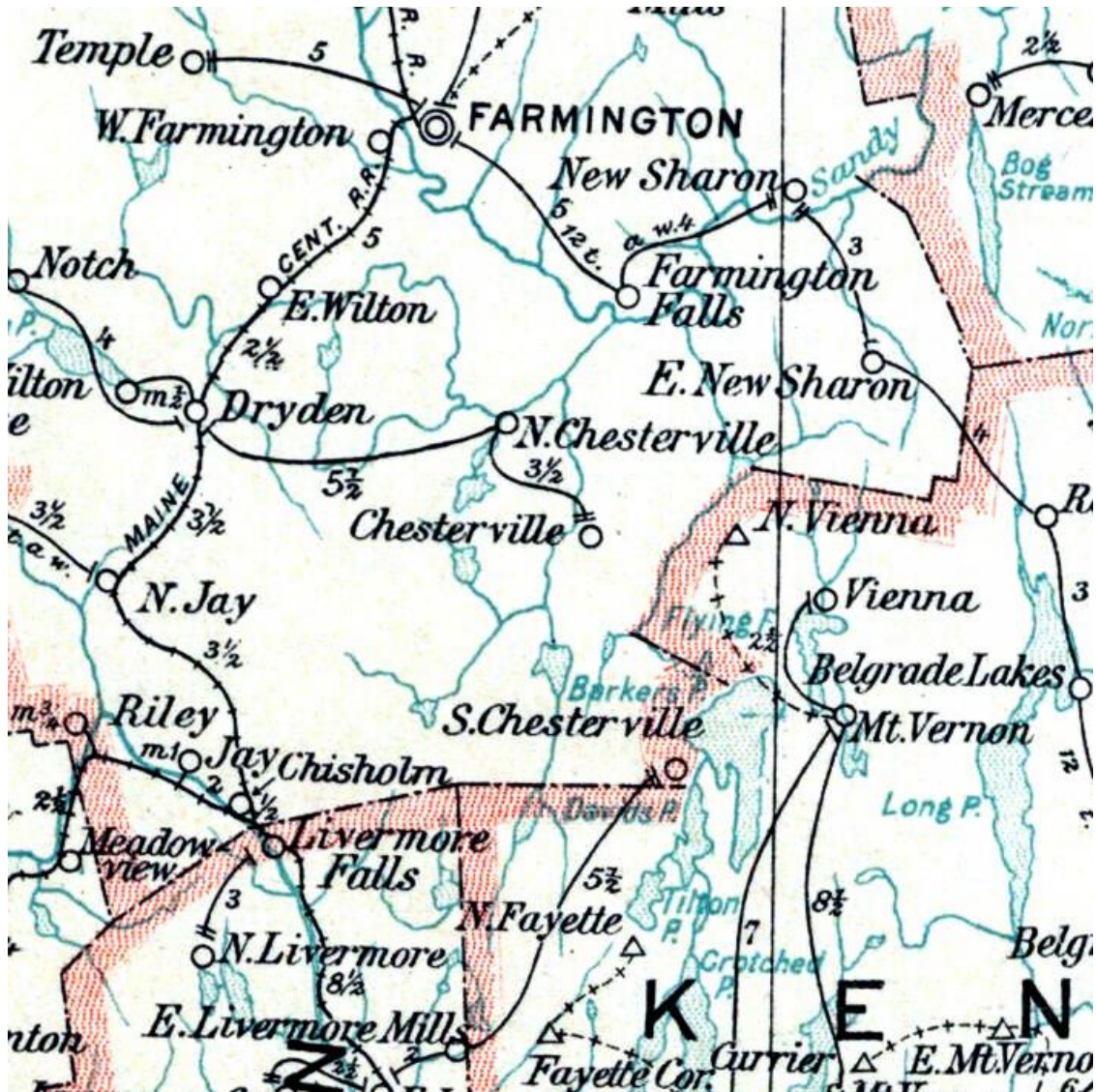
The first post office (24 August 1797) was named Chester and was part of Lincoln County. It became part of Kennebec County on 1 April 1799. The Post Office became Chesterville on 9 May 1809. And then, on 9 May 1838, it became part of Franklin County.

The village of Farmington Falls is partly in Farmington and partly in Chesterville. The Farmington Falls post office is located on the Farmington side of the village.

Briefly, there were nine post offices in Chesterville:

1. [Chester \(1\)](#) Post Office opened in Lincoln County on 24 August 1797. The County changed to Kennebec County on 1 April 1799.
2. [Chester \(1\)](#) Post Office remained open when the County changed to Kennebec County on 1 April 1799. Chester (1) Post Office closed on 4 January 1808 when it became Chesterville Post Office. (Still in Kennebec County)
3. [Chesterville](#) Post Office (formerly Chester 1 Post Office) opened in Kennebec County on 4 January 1808. The County changed to Franklin County on 9 May 1838.
4. [Chesterville](#) Post Office (formerly in Kennebec County) changed to Franklin County on 9 May 1838 and closed on January 1934.
5. [Keith's Mills](#) Post Office opened in Kennebec County on 24 February 1829. The County changed to Franklin County on 9 May 1838.
6. [Keith's Mills](#) Post Office (formerly in Kennebec County) opened as part of Franklin County on 9 May 1838, closed on 27 September 1848, and renamed North Chesterville Post Office.
7. [North Chesterville](#) Post Office (formerly Keith's Mills Post Office) opened on 27 September 1848 and closed on 15 November 1934.

8. [South Chesterville](#) Post Office opened in Kennebec County on 1 November 1837. The County Changed to Franklin County on 9 May 1838.
9. [South Chesterville](#) Post Office (formerly in Kennebec County) opened on 9 May 1838 and closed on 3 August 1935.



Above: In 1903 there were three post offices operating within the Town of Chesterville:
Chesterville, North Chesterville, and South Chesterville.

Source: Detail from Post Route Map of the State of Maine, 1903

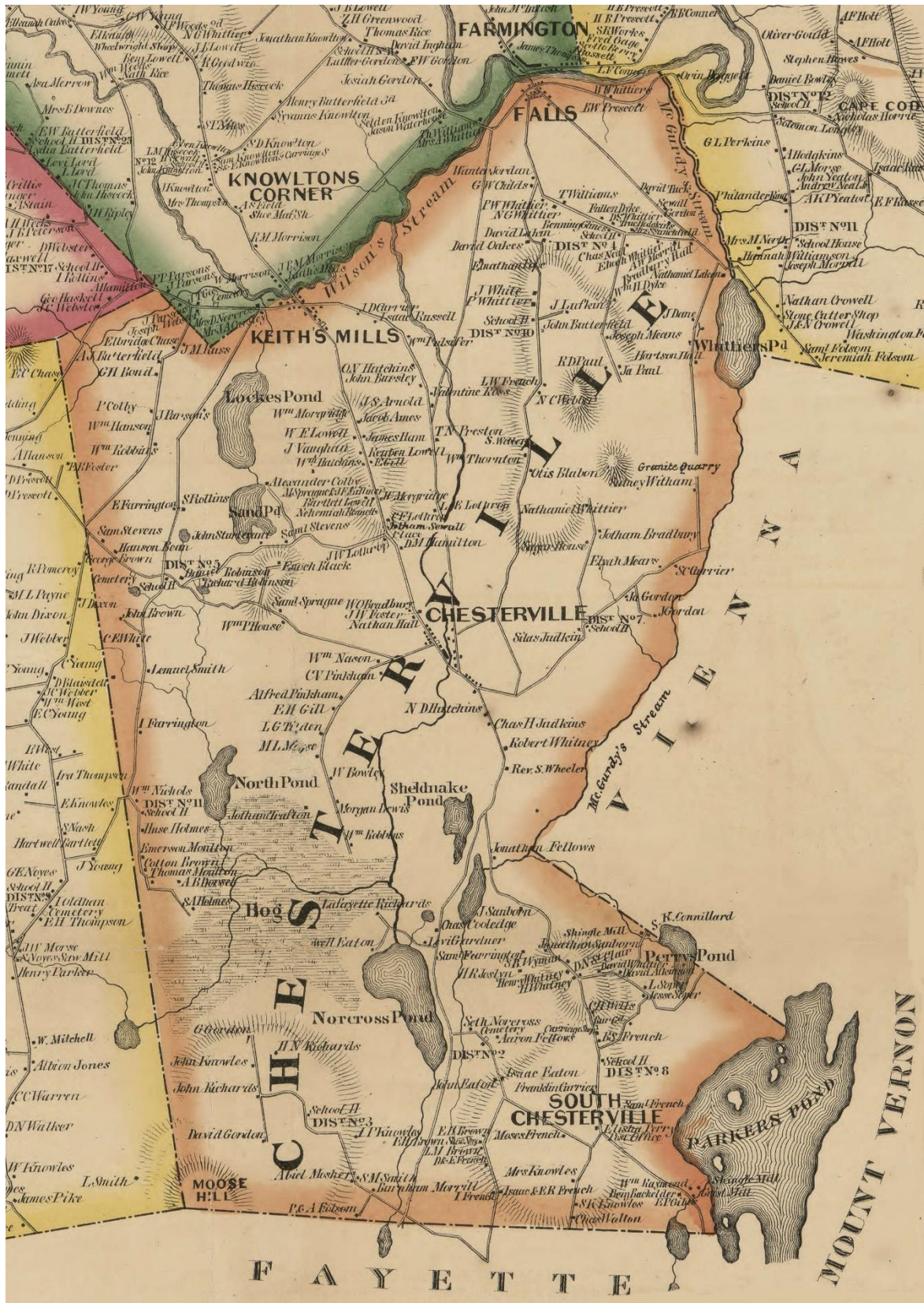
Courtesy of Norman B. Leventhal Map and Education Center at the Boston Public Library.

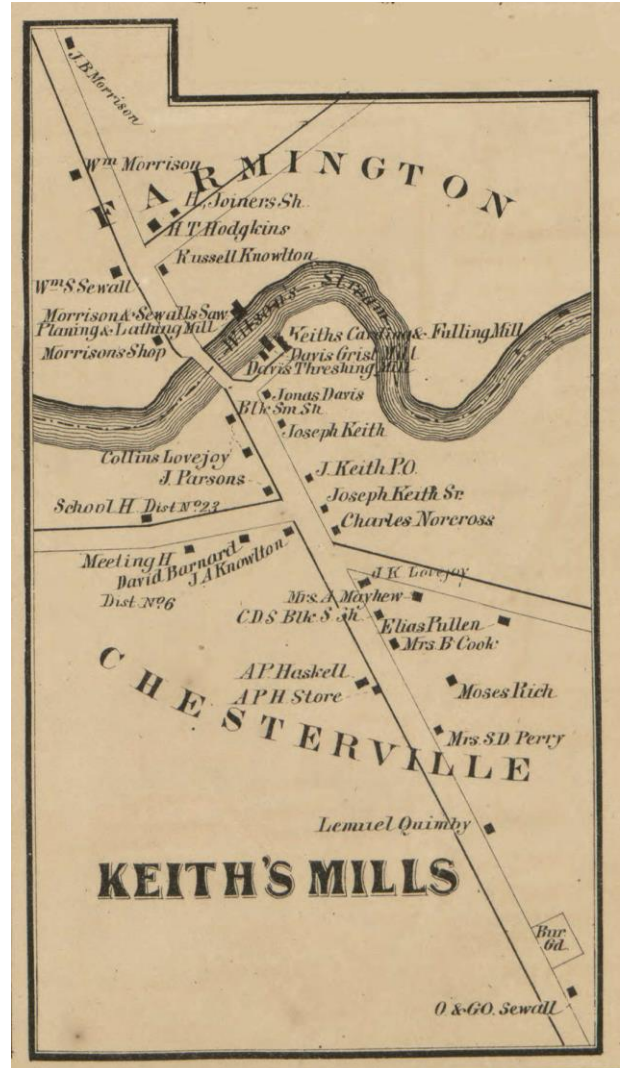
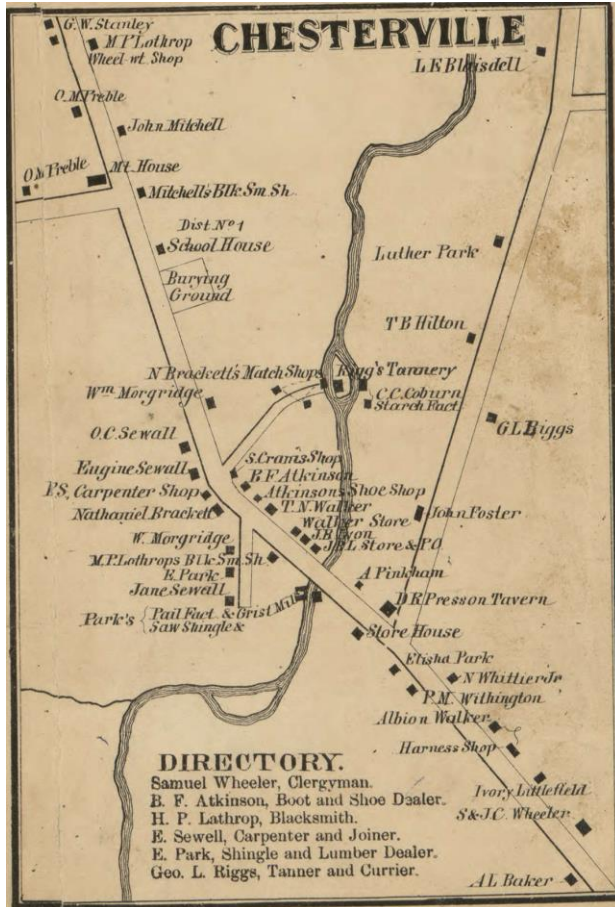
<https://collections.leventhalmap.org/search/commonwealth:cj82km77v>

On next pages: detail of Chesterville,
from the 1861 Topographical Map of Franklin County, by H. F. Walling
Digital reproduction available from the Library of Congress:

<http://hdl.loc.gov/loc.gmd/g3733f.la000267>

<https://www.mainephilatelic.org/mph>





Details showing post office locations, from the 1861 Topographic Map of Franklin County by H. F. Walling.

<http://hdl.loc.gov/loc.gmd/g3733f.la000267>

Chester (1) (Note: There were two post offices in Maine named Chester at different times and locations. The (1) is just a notation. It does not appear in the postmarks and is only used by postal historians and collectors to differentiate between the different post offices.)

24 August 1797:

Chester (1) Post Office opened in Lincoln County.

24 August 1797:

Drummer Sewall Jr. became the Postmaster of the Chester (1) Post Office.

1 April 1799:

Chester (1) Post Office becomes part of Kennebec County. Drummer Sewall Jr. remains as Postmaster.

17 November 1807:

Joshua B. Lowell became the Postmaster of the Chester (1) Post Office.

4 January 1808:

Chester (1) Post Office closed and was renamed Chesterville Post Office.

Chesterville

4 January 1808:

Chesterville Post Office (formerly Chester Post Office) opened.

17 November 1807:

Joshua B. Lowell became the Postmaster of the Chester (1) Post Office and remained as Postmaster when the Chester Post Office was renamed Chesterville Post Office.

7 January 1819

Samuel Melvin, Jr. became the Postmaster of the Chesterville Post Office.

17 May 1824:

Tobias Moore became the Postmaster of the Chesterville Post Office.

23 February 1835:

Joseph D. Prescott became the Postmaster of the Chesterville Post Office.

9 May 1838:

Chesterville Post Office became part of Franklin County. Joseph D. Prescott remained Postmaster when the County was changed from Kennebec County to Franklin County.

21 February 1842:

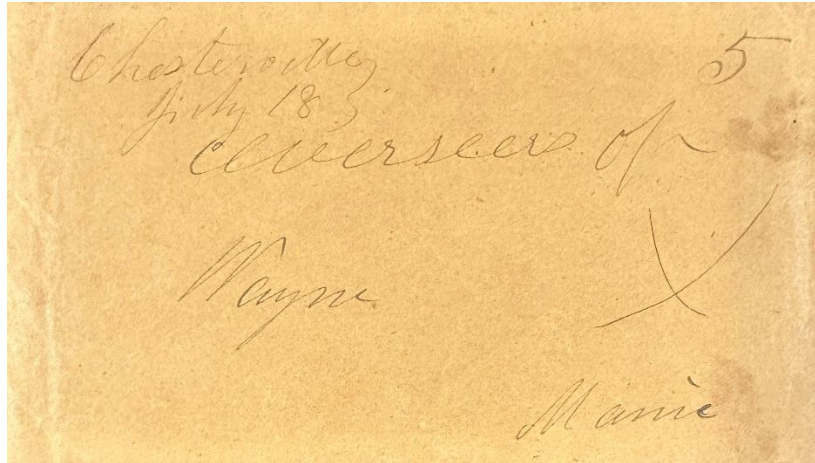
William Morgridge became the Postmaster of the Chesterville Post Office.

31 July 1845:

Otis C. Sewall became the Postmaster of the Chesterville Post Office.

24 March 1852:

Elijah D. Robinson became the Postmaster of the Chesterville Post Office.



18 July 1853:
Manuscript postmark and killer.

7 February 1854:

Phineas M. Withington became the Postmaster of the Chesterville Post Office.

18 February 1856:

Tristram W. Walker became the Postmaster of the Chesterville Post Office.

24 September 1858:

Sewall Brackett became the Postmaster of the Chesterville Post Office.

11 July 1861:

Benjamin F. Atkinson became the Postmaster of the Chesterville Post Office.

3 March 1863:

George L. Riggs became the Postmaster of the Chesterville Post Office.

20 June 1866:

Cherbury F. Lothrop became the Postmaster of the Chesterville Post Office.

10 October 1872:

George A. Dowling became the Postmaster of the Chesterville Post Office.

26 July 1880:

John H. Toothaker became the Postmaster of the Chesterville Post Office.

7 March 1881:

George W. Riggs became the Postmaster of the Chesterville Post Office.

19 September 1893:

Edwin B. Hatch became the Postmaster of the Chesterville Post Office.

5 August 1897:

Charles W. Whittier became the Postmaster of the Chesterville Post Office.

31 May 1899:

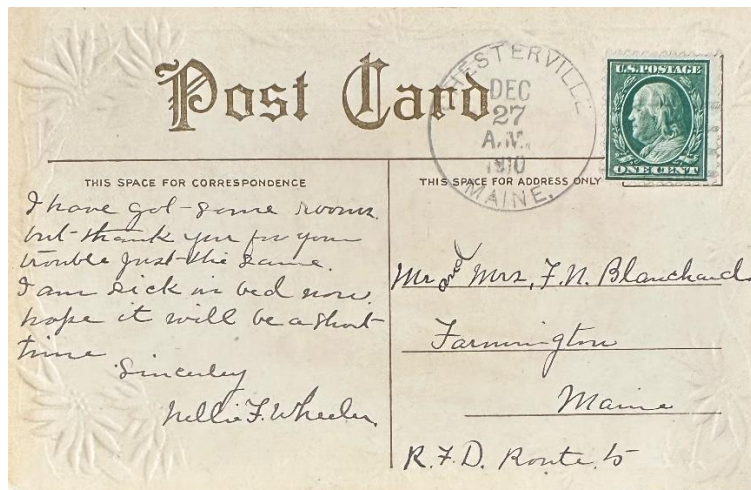
Frank Farrington became the Postmaster of the Chesterville Post Office.

29 March 1902:

Clinton C. Rowe became the Postmaster of the Chesterville Post Office.

18 October 1905:

Augustus H. Black became the Postmaster of the Chesterville Post Office.



27 December 1910:

The circular postmark is 30 mm in diameter with an A/1 killer.

7 October 1915:

Wesley C. Comstock became the Postmaster of the Chesterville Post Office.

16 January 1919:

Albert L. Whittier declined the position of Postmaster of the Chesterville Post Office.

5 May 1919:

Marion S. Wheler became the Postmaster of the Chesterville Post Office.

21 July 1921:

Stanley J. Knapp became the Postmaster of the Chesterville Post Office.

4 August 1923:

Mrs. Sadie E. Gill became the Postmaster of the Chesterville Post Office.

19 December 1933:

Chesterville Post Office closed effective 15 January 1934 with service from Dryden.

Keith's Mills

24 February 1829:

Keith's Mills Post Opened in Kennebec County.

24 February 1829:

Joseph Keith became the Postmaster of the Keith's Mills Post Office.

9 May 1838:

Keith's Mills Post Office is now part of Franklin County. Joseph Keith remains as the Postmaster.

16 April 1840:

Aaron P. Haskell became the Postmaster of the Keith's Mills Post Office.

18 June 1841:

Joseph Keith became the Postmaster of the Keith's Mills Post Office.

20 March 1846:

Jonas Davis became the Postmaster of the Keith's Mills Post Office.

27 September 1848:

Keith's Mills Post Office closed and was renamed North Chesterville Post Office.

North Chesterville

27 September 1848:

North Chesterville Post Office (formerly Keith's Mills Post Office) opened.

20 March 1846:

Jonas Davis became the Postmaster of the Keith's Mills Post Office and remained as Postmaster when the name was changed to the North Chesterville Post Office.

11 April 1849:

Joseph Keith became the Postmaster of the North Chesterville Post Office.

19 May 1869:

Aaron P. Haskell became the Postmaster of the North Chesterville Post Office.

17 January 1878:

Joseph Keith became the Postmaster of the North Chesterville Post Office.

27 November 1891:

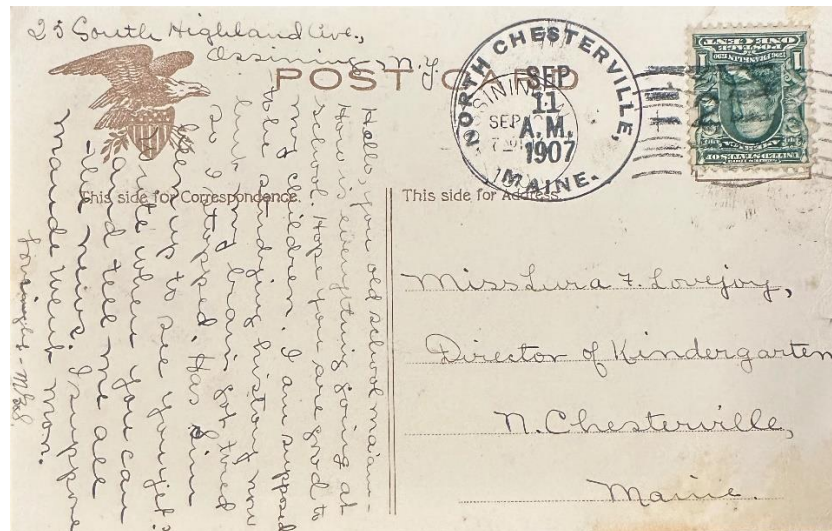
George F. Lovejoy became the Postmaster of the North Chesterville Post Office.

14 June 1893:

David Barnard became the Postmaster of the North Chesterville Post Office.

9 October 1906

Linton J. Keith became the Postmaster of the North Chesterville Post Office.



11 September 1907:

The circular postmark is 31 mm in diameter with a Doane 3/2 killer. A similar postmark and killer dated 4 April 1908 is known.

18 September 1911:

Leonard S. Keith became the Postmaster of the North Chesterville Post Office.

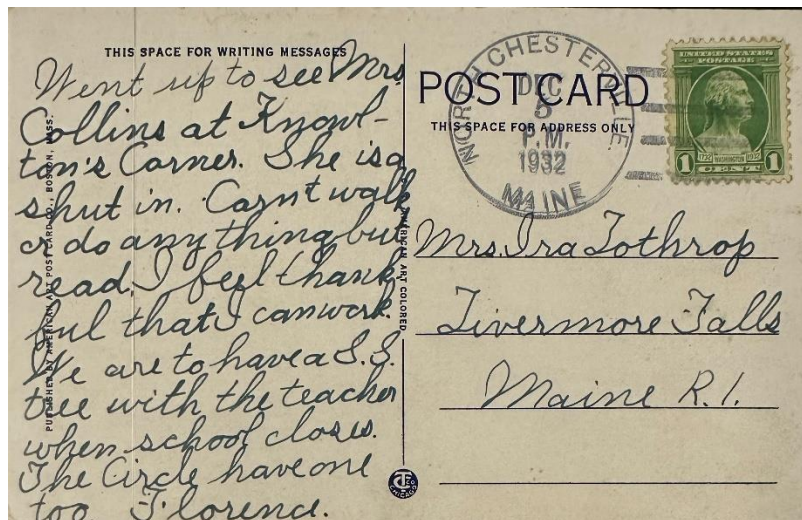


30 October 1913:

The circular postmark is 32 mm in diameter with a four-bar B killer.

6 February 1932:

Fred Johnson became the Postmaster of the North Chesterville Post Office.



5 December 1932:

The circular postmark is 32 mm in diameter with a four-bar B killer.

23 October 1934:

North Chesterville Post Office closed effective 15 November 1934 service from Farmington.

South Chesterville

1 November 1837:

South Chesterville Post Office opened as part of Kennebec County.

1 November 1837:

Elisha Perry became the Postmaster of the South Chesterville Post Office.

9 May 1838:

South Chesterville Post Office became part of Franklin County. Elisha Perry remained as Postmaster.

8 April 1846:

Dearborn Perry became the Postmaster of the South Chesterville Post Office.

16 March 1848:

Elisha Perry became the Postmaster of the South Chesterville Post Office.



11 May circa 1862:
Manuscript Postmark (forwarded)

7 July 1864:

Amzi S. French became the Postmaster of the South Chesterville Post Office.

18 August 1864:

Elisha Perry became the Postmaster of the South Chesterville Post Office.

15 June 1868:

Mrs. Frances A. Perry became the Postmaster of the South Chesterville Post Office.

7 April 1871:

Hervey R. Josselyn became the Postmaster of the South Chesterville Post Office.

13 May 1875:

Sylvanus B. Philbrick became the Postmaster of the South Chesterville Post Office.

28 March 1881:

Nathan E. Warner became the Postmaster of the South Chesterville Post Office.

22 September 1881:

Nathan M. French became the Postmaster of the South Chesterville Post Office.



19 August 1895:

The circular postmark is 27 mm in diameter with a four-circle target killer.

3 March 1903:

Mary E. French became the Postmaster of the South Chesterville Post Office.

15 June 1904:

Albion Gordon became the Postmaster of the South Chesterville Post Office.



25 March 1907:

The circular postmark is 28.5 mm in diameter with a Doane 2/1 killer.

4 February 1911:

Francis E. Gordon became the Postmaster of the South Chesterville Post Office.

2 November 1911:

Emma A. Richards became the Postmaster of the South Chesterville Post Office.

21 November 1912:

Carrie E. Burgess became the Postmaster of the South Chesterville Post Office.

10 January 1917:

Florence S. Burgess became the Postmaster of the South Chesterville Post Office.

10 February 1919:

Florence S. Lamb became the Postmaster of the South Chesterville Post Office.



10 May 1937:

The circular postmark is 31 mm in diameter with a four-bar and questionable killer.

30 July 1935:

South Chesterville Post Office closed effective 3 August 1935 with service from East Livermore.

Credits:

This document is based on the original web page compiled by the V. F. Thomas Co. (2021), with revisions and additions by James Husson and Brian Damien (2024).

Thank you for the contributions to this page by the Strout Family, and Jim Husson.

Thank you to the Waterville Stamp Club (<https://thewatervillestampclub.com>) for helping ensure this project's continuity.

Sources, Postal History:

Maine Postal History Gateway at Maine Philatelic Society:
<https://www.mainephilatelic.org/mph>

The Post Offices of Maine 2022, Maine Philatelic Society:
<http://www.mainephilatelic.org/books/TPOOM>

Postmaster Appointments

>>>When searching Postmaster Appointment records, note that Chesterville was in Lincoln County until 1 April 1799, and then in Kennebec County until 9 May 1838, when it became part of Franklin County. *But...appointments for the period up to 1832 are in files that are not organized by county.* For help finding those earlier appointments (as well as the later ones) see the Finding Aid for U. S. Postmaster Appointment Records, 1789-Present, <https://www.mainephilatelic.org/pma-findingaid.pdf>

For appointments 1832 and later:

Kennebeck or Kennebec County, Maine: (for appointments for the post offices of Chesterville, 1832-1838) <https://catalog.archives.gov/id/78746653>

Franklin County, Maine: (for appointments for the post offices of Chesterville, 1838-1971) <https://catalog.archives.gov/id/78746541>

Postmaster Finder by City:

<https://about.usps.com/who/profile/history/postmaster-finder/postmasters-by-city.htm>

Records of the U. S. Post Office Department: Reports of Site Locations; Franklin, Hancock Counties, Maine <https://catalog.archives.gov/id/68415820>

The Digitised U. S. Postal Bulletins and PL&Rs 1880—2013
<http://www.uspostalbulletins.com/>

Additional material can be found at Research Resources on Maine Postal History:
<http://www.mainephilatelic.org/books/post-office-sources.pdf>

Sources, Chesterville History

The Sandy River & Its Valley, by Vincent York. Farmington: Knowlton & McLeary, 1980. Link to holdings in Maine libraries: <https://mainecat.maine.edu/record=b2605438>

Topographical Map of Franklin County, Maine, by H. F. Walling, 1861.
<http://hdl.loc.gov/loc.gmd/g3733f.la000267> (Details from this map are reproduced on pp. 3-4 of this document.)

Counties, Cities, Towns and Plantations of Maine: A Handbook of Incorporations, Dissolutions and Boundary Changes. https://digitalmaine.com/arc_publications/11/

Sources, Postmarks

Anderson, Gary. Maine Doane cancels; from the Doane Cancel website,

http://www.doanecancel.com/maine_doanes.html

<http://www.doanecancel.com/doane.html>

Sanders, Christine, The 4-Bar Postmark of the USPS, PMCC Bulletin Reprinted Article, Original Publication Date: June, July & December 2012.

http://www.postmarks.org/resources/PMCC_FourBarCancelsUSPS.pdf