

Carrabassett Valley Postal History

Franklin County

Last update for this page: 16 January 2025

This page is part of the Maine Postal History website—a project of the Maine Philatelic Society.
For more information, see <https://www.mainephilatelic.org/mph>.

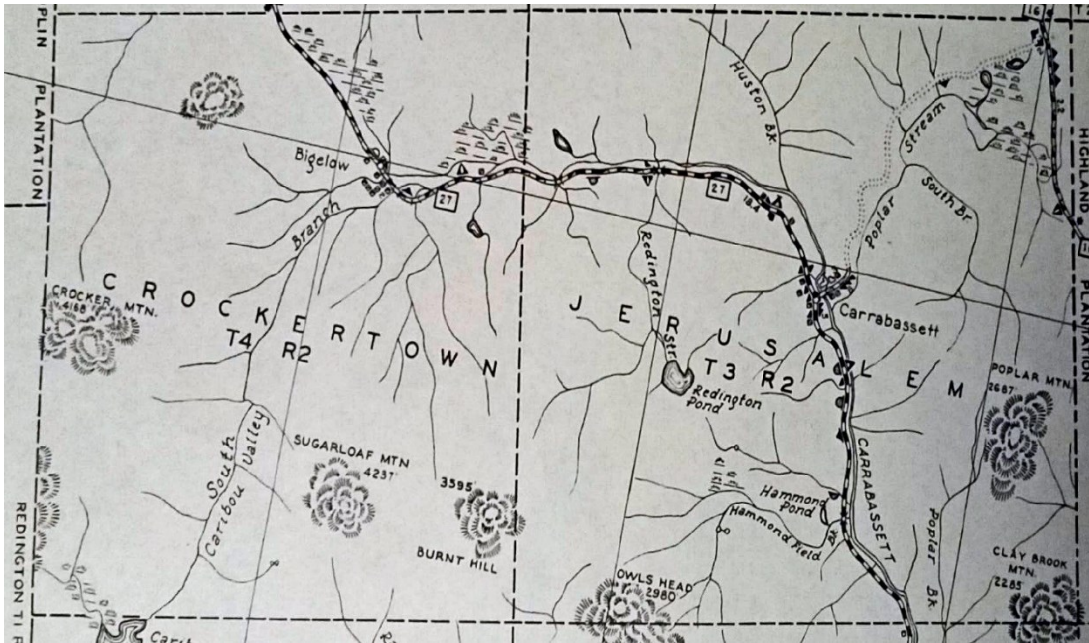
Carrabassett Valley was originally the site of logging activity, sawmills and sporting camps. Its history as a destination for skiing did not begin until the early 1950s, long after the last post office in the town closed in 1937.

The home of Sugarloaf Mountain, Carrabassett Valley is one of the youngest towns in the State of Maine. It was formed from two townships: Jerusalem Township on the east, and Sugarloaf Township (formerly known as Crockertown Township) on the west. Jerusalem Township had Carrabassett village; Sugarloaf Township had Sugarloaf Mountain, and the village of Bigelow. (Not to be confused with the land preserve, or the mountain, or the township named Bigelow, all several miles to the north.)

Carrabassett Valley was first incorporated on 26 October 1971 from Jerusalem Township. Four years later the voters of Sugarloaf Township voted to merge their township into Carrabassett Valley, and that was approved by the voters of Carrabassett Valley, and finally ratified by the State Legislature.

Briefly, there were three post offices in Carrabassett Valley:

1. [Bigelow](#) Post Office opened on 4 August 1900 and closed on 31 July 1911.
2. [Carrabassett](#) Post Office opened on 28 November 1894 and closed on 15 September 1903.
3. [Carrabassett](#) Post Office reopened on 2 February 1924 and closed on 15 April 1937.



Above: this map of the two townships that eventually became the Town of Carrabassett Valley reveals the scant population of the times before skiing brought crowds to the area. The map detail shown here is from a map prepared by the State Highway Commission for its 1938 General Highway Atlas of Maine.

Below: Details from the Post Route Maps of the State of Maine show the two post offices that operated in the area. At left, the 1897 edition shows Carrabassett, which operated 1894-1903 and 1924-1937, and at right, the 1903 edition shows Bigelow, in operation from 1900 to 1911.



Sources: Both maps made available courtesy of the Norman B. Leventhal Map and Education Center at the Boston Public Library.

1897 map, <https://collections.leventhalmap.org/search/commonwealth:cj82kk95k>

1903 map, <https://collections.leventhalmap.org/search/commonwealth:cj82km77v>

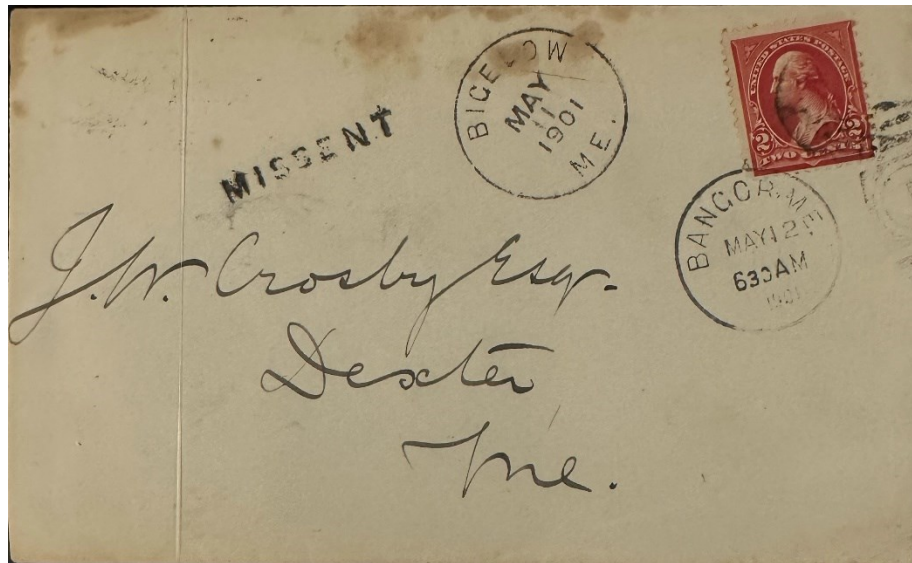
Bigelow

4 August 1900:

Bigelow Post Office opened.

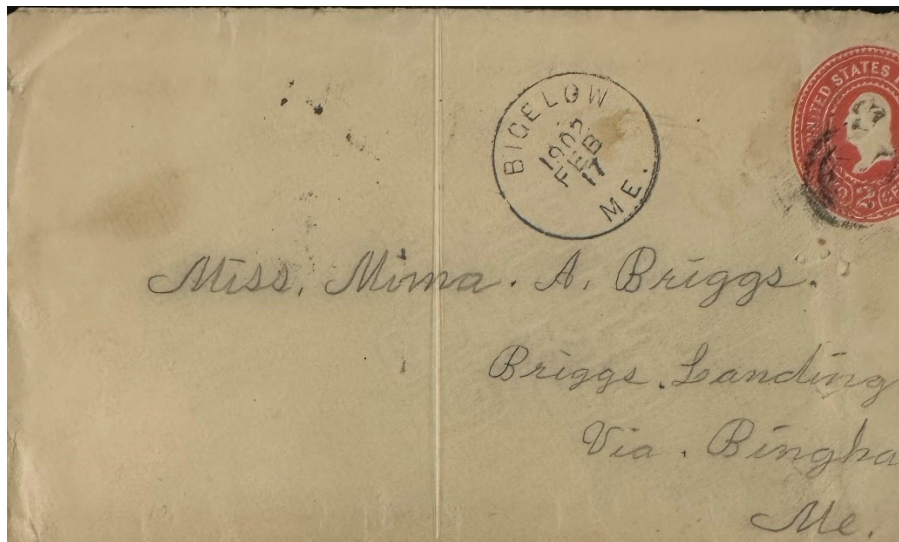
4 August 1900:

Lizzie M. Rackliff became the Postmaster of the Bigelow Post Office.



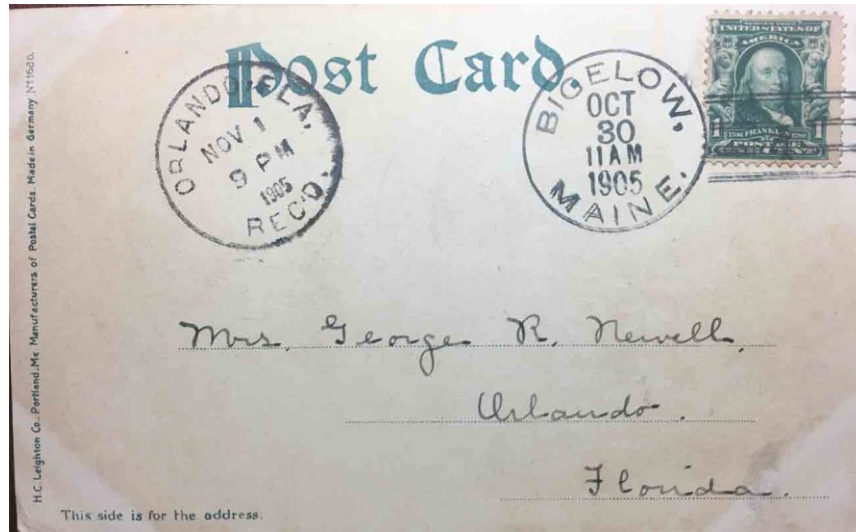
11 May 1901:

The circular postmark is 27 mm in diameter with no killer.



17 February 1902:

The circular postmark is 27.5 mm in diameter with a four-circle target killer. Note: the year is on top.



30 October 1905:

The circular postmark is 29 mm in diameter with a Doane 2/4 killer. Similar postmarks and killers dated 8 December 1905, 11 July 1907, 11 July 1908, and 31 August 1910 are known.

14 April 1906:

Carrie F. Hinds became the Postmaster of the Bigelow Post Office.

14 May 1910:

Eula M. Shydell became the Postmaster of the Bigelow Post Office.

31 July 1911:

Bigelow Post Office closed with service from Stratton.

Carrabassett

28 November 1894:

Carrabassett Post Office opened.

28 November 1894:

Sumner J. Wyman became the Postmaster of the Carrabassett Post Office.

6 September 1895:

Mrs. Mary E. Prescott became the Postmaster of the Carrabassett Post Office.

8 July 1897:

James G. Harlow became the Postmaster of the Carrabassett Post Office.

28 March 1898:

Lizzie M. Rackliff became the Postmaster of the Carrabassett Post Office.

21 April 1900:

Fred C. Huse became the Postmaster of the Carrabassett Post Office.

19 October 1900:

Henry E. White became the Postmaster of the Carrabassett Post Office.

3 May 1901:

Albin B. Wing became the Postmaster of the Carrabassett Post Office.

28 August 1903:

Carrabassett Post Office closed effective 15 September 1903 with service from Bigelow.

29 February 1924:

Carrabassett Post Office reopened.

29 February 1924:

Abbott W. Lawrence became the Postmaster of the Carrabassett Post Office.

26 November 1924:

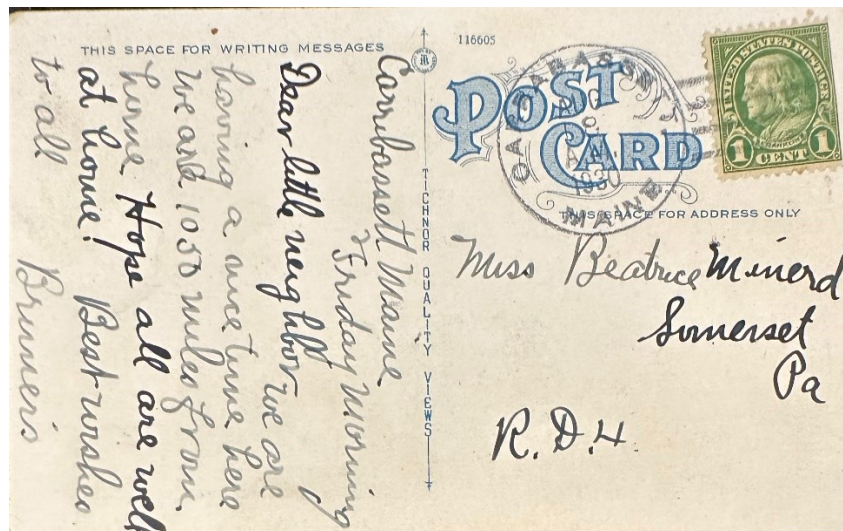
Frank M. Hammond became the Postmaster of the Carrabassett Post Office.

18 June 1926:

Philip B. Corey became the Postmaster of the Carrabassett Post Office.

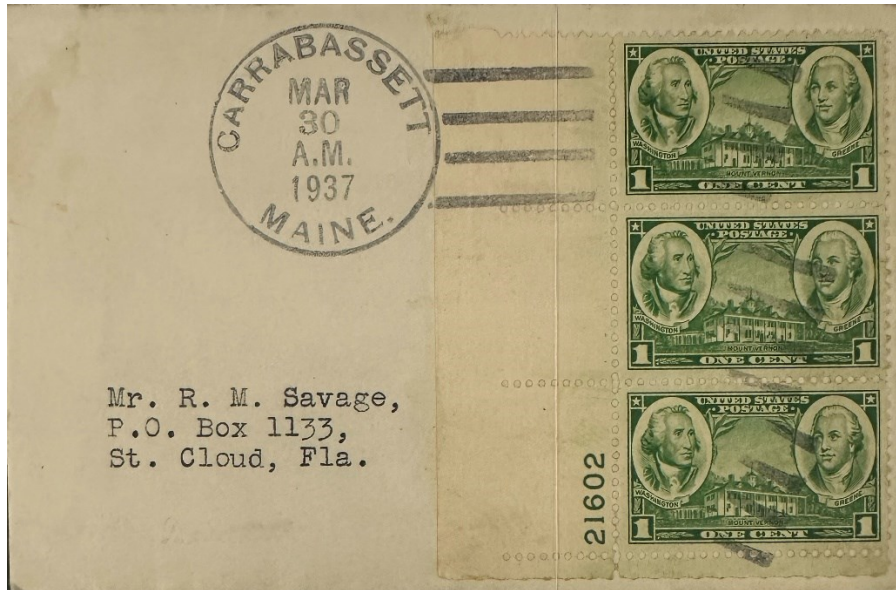
6 April 1929:

Arthur F. Soule became the Postmaster of the Carrabassett Post Office.



18 August 1930:

The circular postmark is 32 mm in diameter with a four-bar A/3 killer.



30 March 1937:

The circular postmark is 33.5 mm in diameter with a four-bar C/2 killer.

18 March 1937:

Carrabassett Post Office closed effective 15 April 1937 with service from Stratton.

Credits:

This document is based on the original web page compiled by the V. F. Thomas Co. (2021), with revisions and additions by James Husson and Brian Damien (2024).

Thank you for the contributions to this page by Jim Husson.

Thank you to the Waterville Stamp Club (<https://thewatervillestampclub.com>) for helping ensure this project's continuity.

Sources, Postal History:

Maine Postal History Gateway at Maine Philatelic Society:
<https://www.mainephilatelic.org/mph>

The Post Offices of Maine 2022, Maine Philatelic Society:
<http://www.mainephilatelic.org/books/TPOOM>

National Archives Catalog: Postmaster Appointments for Franklin County
Franklin: Franklin, Maine: <https://catalog.archives.gov/id/78746541>

Postmaster Finder by City:

<https://about.usps.com/who/profile/history/postmaster-finder/postmasters-by-city.htm>

The Digitised U. S. Postal Bulletins and PL&Rs 1880—2013

<http://www.uspostalbulletins.com/>

Additional material, including links to official records of postmaster appointments, can be found at Research Resources on Maine Postal History: <http://www.mainephilatelic.org/books/post-office-sources.pdf>

Sources, Carrabassett Valley History

Carrabassett Valley History Timeline, Carrabassett Valley History Committee

<https://history.carrabassettvalley.org/>

U. S. Geological Survey Topographic Quadrangle Map, Stratton

https://ngmdb.usgs.gov/ht-bin/tv_browse.pl?id=b33277360d4f62a5b9dd32bd81603ec6

U. S. Geological Survey Topographic Quadrangle Map, Dead River

https://ngmdb.usgs.gov/ht-bin/tv_browse.pl?id=4a37762513382b157b4cd2c6ba29b277

.

Sources, Postmarks

Anderson, Gary. Maine Doane cancels; from the Doane Cancel website,

http://www.doanecancel.com/maine_doanes.html

<http://www.doanecancel.com/doane.html>

Sanders, Christine, The 4-Bar Postmark of the USPS, PMCC Bulletin Reprinted Article, Original Publication Date: June, July & December 2012.

http://www.postmarks.org/resources/PMCC_FourBarCancelsUSPS.pdf

U. S. Cancel Finder: Find a Machine Cancel by Style on the Swanson Group website:

<http://swansongrp.com/postal/about/index.html>