

Beattie Township (T2 R8 WBKP) Postal History

Franklin County, Maine

Last update for this page: 13 January 2025

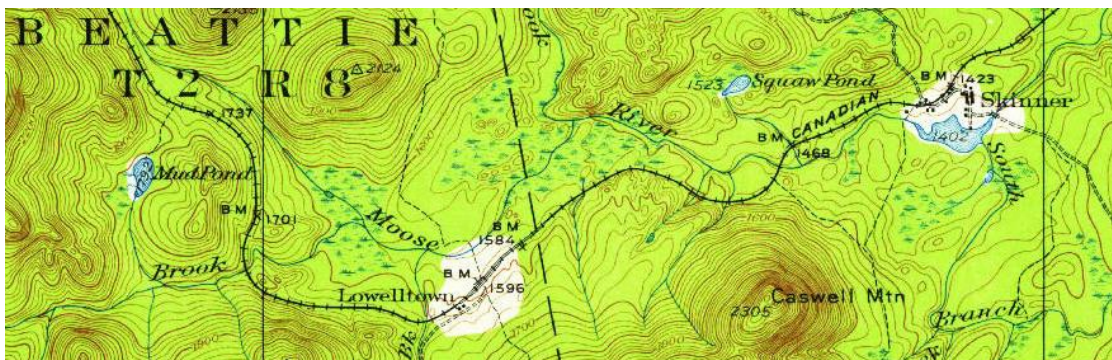
This page is part of the Maine Postal History website—a project of the Maine Philatelic Society.
For more information, see <https://www.mainephilatelic.org/mph>

Beattie Township is an unorganized township along the Canadian border. This where the railway originally built by in the 1880s by Canadian Pacific enters the state from the west. It is closer to Lac Megantic, Quebec, than to any sizable town in Maine. From the 1880s until the development of logging roads in the 1900s, the township's primary connection with the rest of the world was via the Canadian Pacific Railway. In the eastern portion of Beattie there was a post office called Beattie. For reasons unknown the name of the post office was changed to Lowelltown, although that name belongs to the township to the east.

The numeric designation of the township, T2 R8 WBKP, stands for Township 2, Range 8, West of Bingham's Kennebec Purchase.

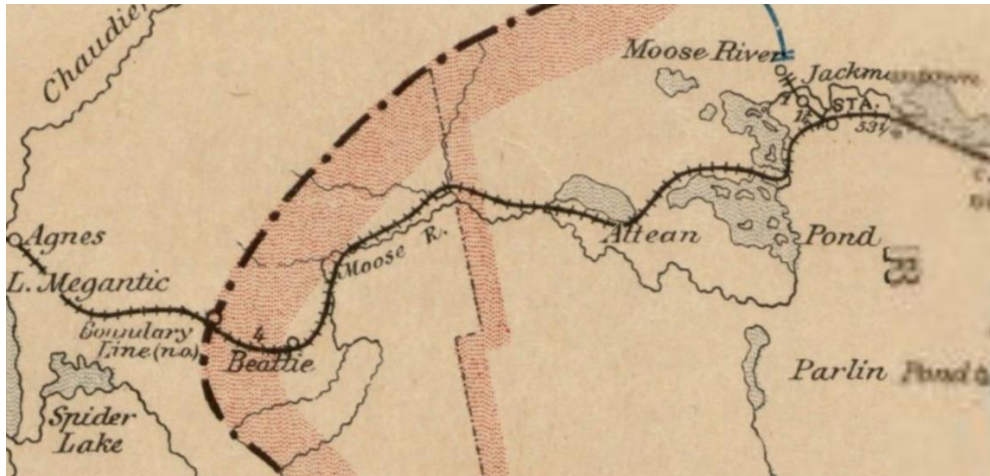
Briefly, there were three post offices in Beattie Township:

1. [Beattie](#) Post Office opened on 8 February 1889 and closed on 10 February 1892. The name was changed to Lowelltown Post Office.
2. [Lowelltown](#) Post Office (formerly Beattie Post Office) opened on 10 February 1892 and closed on 15 June 1907.
3. [Lowelltown](#) Post Office reopened on 23 November 1911 and closed on 15 September 1913.



Topographic map from 1928 shows the hamlet of Lowelltown as located in Beattie Township although Lowelltown is actually the name of the township just to the east.

https://ngmdb.usgs.gov/ht-bin/tv_browse.pl?id=7b40e00a65e4023d768389ed6b3b799d



In 1891, the post office in Beattie Township was called Beattie. In early 1892, the name was changed to Lowelltown.

Source: Detail is from Post Route Map of the State of Maine, 1891.

Map reproduction courtesy of Norman B. Leventhal Map and Education Center at the Boston Public Library.

<https://collections.leventhalmap.org/search/commonwealth:cj82kj790>



The 1895 map reflects the name change to Lowelltown for the post office.

Source: Detail is from Post Route of the State of Maine, 1895.

Map reproduction is courtesy of Norman B. Leventhal Map and Education Center at the Boston Public Library.

<https://collections.leventhalmap.org/search/commonwealth:cj82kk45c>

Beattie

8 February 1889:

Beattie Post Office opened

8 February 1889:

Thomas C. Beattie became the Postmaster of the Beattie Post Office.

<https://www.mainephilatelic.org/mph>

23 April 1890:

George Van Dyke became the Postmaster of the Beattie Post Office.

10 February 1892:

Beattie Post Office closed and was renamed Lowelltown Post Office.



The station at Lowelltown, taken about 1890. Contemporary Report of Site Location indicates that the post office was located in the station.

Image courtesy of Special Collections, Raymond H. Fogler Library, DigitalCommons@UMaine, https://digitalcommons.library.umaine.edu/spec_photos/3632

Lowelltown

Note: Lowelltown is not to be confused with the Town of Lowell, which is located many miles to the east, near Enfield in Penobscot County.

10 February 1892:

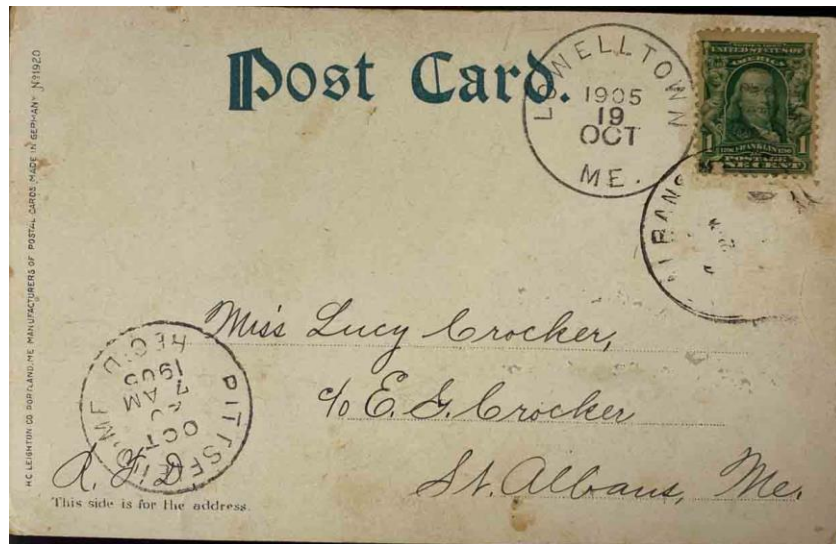
Lowelltown Post Office (formerly Beattie Post Office) opened.

23 April 1890:

George Van Dyke became the Postmaster of the Beattie Post Office and remained as Postmaster when the Beattie Post Office was renamed the Lowelltown Post Office.

1 August 1903:

William L. Walker became the Postmaster of the Lowelltown Post Office.



19 October 1905:

The circular postmark is 29 mm in diameter with an unknown killer.

(12 March 1907):

(J. Maude Walker) declined the position of Postmaster of the Lowelltown Post Office.

(6 May 1907):

(James A. Smyth) declined the position of Postmaster of the Lowelltown Post Office.

31 May 1907:

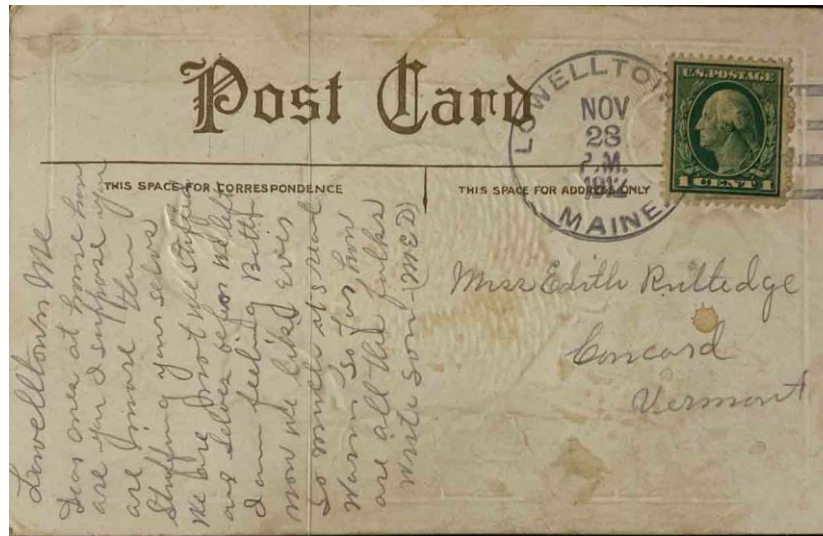
Lowelltown Post Office closed effective 15 June 1907 with service from Skinner.

23 November 1911:

Lowelltown Post Office is reopened.

23 November 1911:

Perley R. Lovett became the Postmaster of the Lowelltown Post Office.



28 November 1912:

The circular postmark is 32 mm in diameter with a four-bar B killer. A similar postmark and killer dated 20 March 1913 is known.

15 September 1913:

Lowelltown Post Office closed with service from Skinner.

Credits:

This document is based on the original web page compiled by the V. F. Thomas Co. (2021), with revisions and additions by James Husson and Brian Damien (2024).

Thank you for the contributions to this page by Jim Husson.

Thank you to the Waterville Stamp Club (<https://thewatervillestampclub.com>) for helping ensure this project's continuity.

Sources, Postal History and Beattie History

Maine Postal History Gateway at Maine Philatelic Society:
<https://www.mainephilatelic.org/mph>

The Post Offices of Maine 2022, Maine Philatelic Society:
<http://www.mainephilatelic.org/books/TPOOM>

National Archives Catalog: Postmaster Appointments for Franklin County:
Franklin, Maine: <https://catalog.archives.gov/id/78746541>

National Archives Catalog: Reports of Site Locations for Franklin County, Beattie and Lowelltown: <https://catalog.archives.gov/id/68415820?objectPage=20> and <https://catalog.archives.gov/id/68415820?objectPage=159>

Postmaster Finder by City:

<https://about.usps.com/who/profile/history/postmaster-finder/postmasters-by-city.htm>

The Digitised U. S. Postal Bulletins and PL&Rs 1880—2013

<http://www.uspostalbulletins.com/>

U. S. Geological Survey Topographic Quadrangle Map, Lowelltown, Maine, 1928 edition. Includes all of Beattie Township.

https://ngmdb.usgs.gov/ht-bin/tv_browse.pl?id=7b40e00a65e4023d768389ed6b3b799d

Additional material, including links to official records of postmaster appointments, can be found at Research Resources on Maine Postal History: <http://www.mainephilatelic.org/books/post-office-sources.pdf>

.

Sources, Postmarks

Anderson, Gary. Maine Doane cancels; from the Doane Cancel website,

http://www.doanecancel.com/maine_doanes.html

<http://www.doanecancel.com/doane.html>

Sanders, Christine, The 4-Bar Postmark of the USPS, PMCC Bulletin Reprinted Article, Original Publication Date: June, July & December 2012.

http://www.postmarks.org/resources/PMCC_FourBarCancelsUSPS.pdf