

Jim Pond Township Postal History

Franklin County, Maine

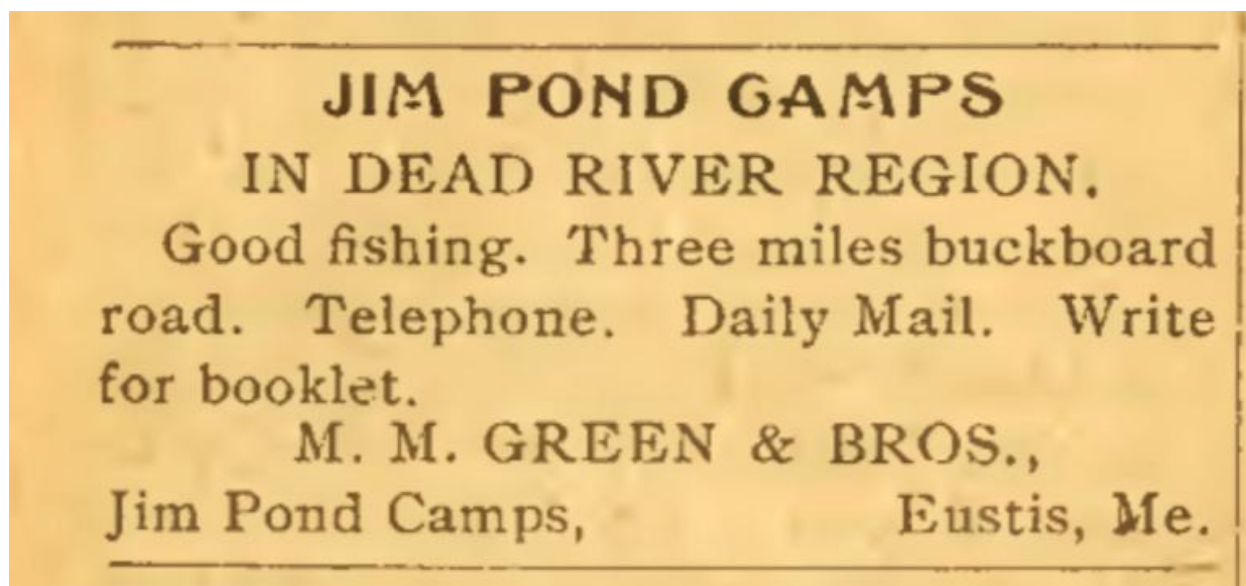
Last update for this page: 05/07/2025

This page is part of the Maine Postal History website—a project of the Maine Philatelic Society. For more information, see <https://www.mainephilatelic.org/mph>.

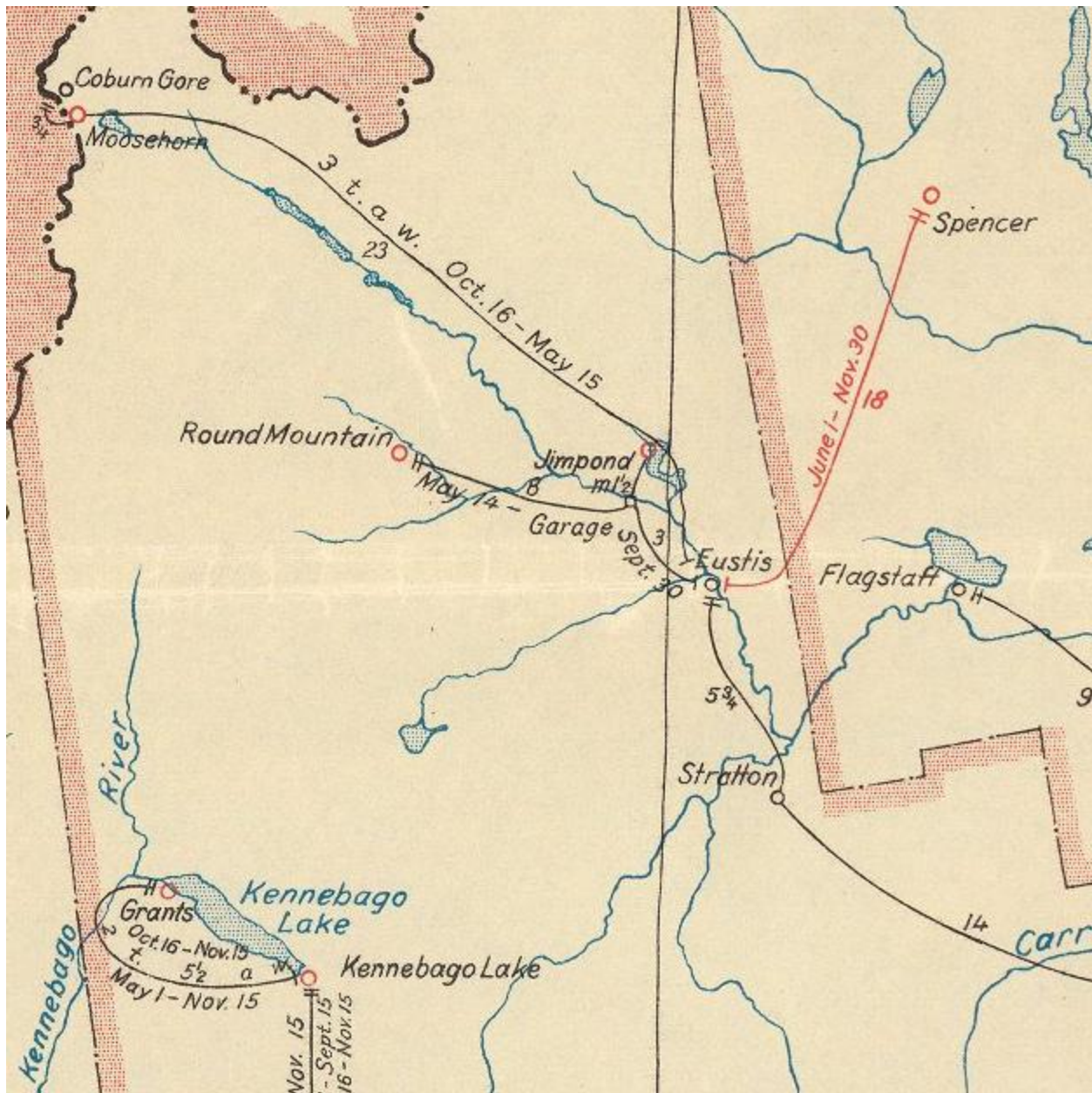
Jim Pond Township includes Jim Pond – sometimes called Big Jim Pond – and a number of smaller ponds; a section of the North Branch of the Dead River; and Farm Hill. It is known for its fishing and is the site of Jim Pond Camps, where the Jimpond post office was located.

Briefly, there were two post offices in Jim Pond Township:

1. [Farm Hill](#) Post Office opened on 2 January 1901 and closed on 11 April 1902. The order was rescinded, and the Farm Hill Post Office was never opened.
2. [Jimpond](#) Post Office opened on 2 June 1920 and closed on 30 April 1945. Summer post office only. The post office did not open for the 1943 or 1944 seasons; thus, the effective last day was 1 October 1942.



This advertisement for Jim Pond Camps appeared in *The Maine Woods* newspaper, January 22, 1914, years before the post office opened. It appears mail service was a priority for the camp's customers; the proprietors must have been fetching mail daily for customers from the nearest office before opening their own post office in 1920.



The Post Route Map of the State of Maine from 1941 reveals the location of Jim Pond, north of Eustis.

Detail from digital copy of map, courtesy of the David Rumsey Map Collection, Stanford University Libraries.

<https://www.davidrumsey.com/luna/servlet/s/zrc923>

Farm Hill

2 January 1901:

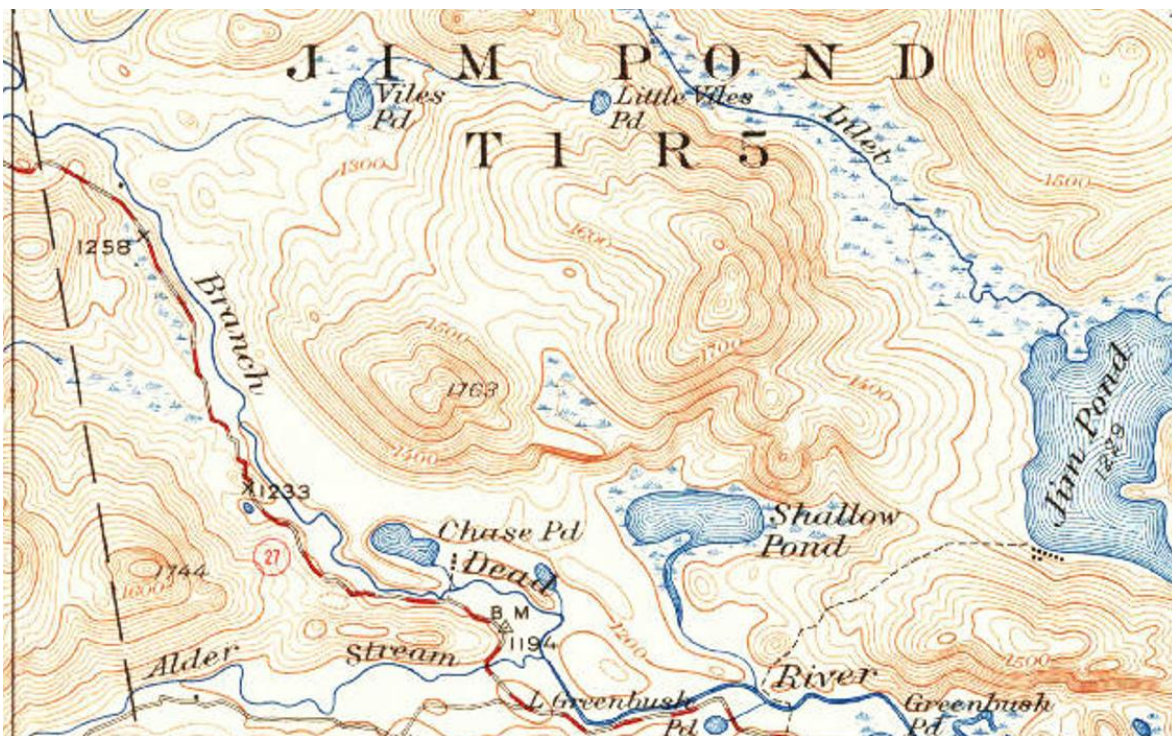
Farm Hill Post Office was scheduled to open.

2 January 1901:

Roscoe A. Dyer was appointed as Postmaster of the Farm Hill Post Office.

11 April 1902:

Farm Hill Post Office was discontinued. The order was rescinded, and this post office was never opened.



On this detail from a 1932 topographic map, Jim Pond Camps, the site of the post office, were on the southern shore of Jim Pond. As late as the 1950s, clients parked on the south side of the river, took a ferry across the river, and then were transported over a rough road to the camps in a 1932 Model A Beach Wagon.

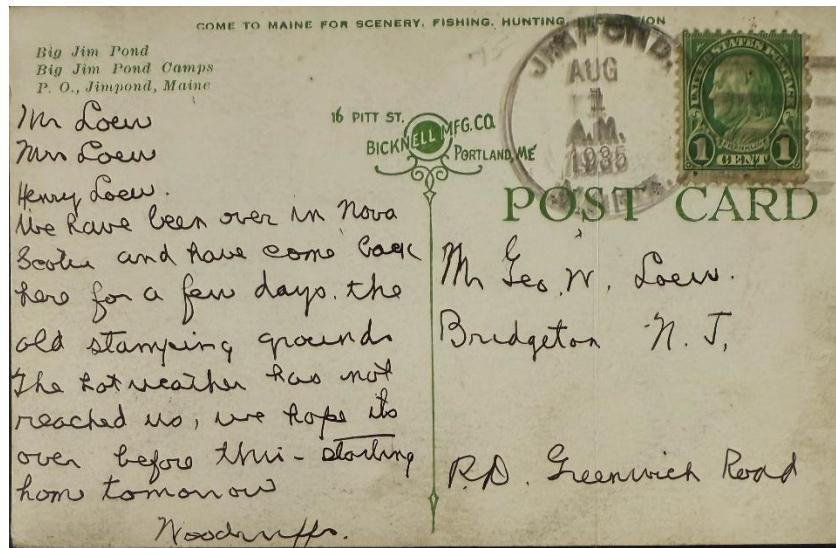
Jimpond

2 June 1920:

Jimpond Post Office opened as a Summer Office.

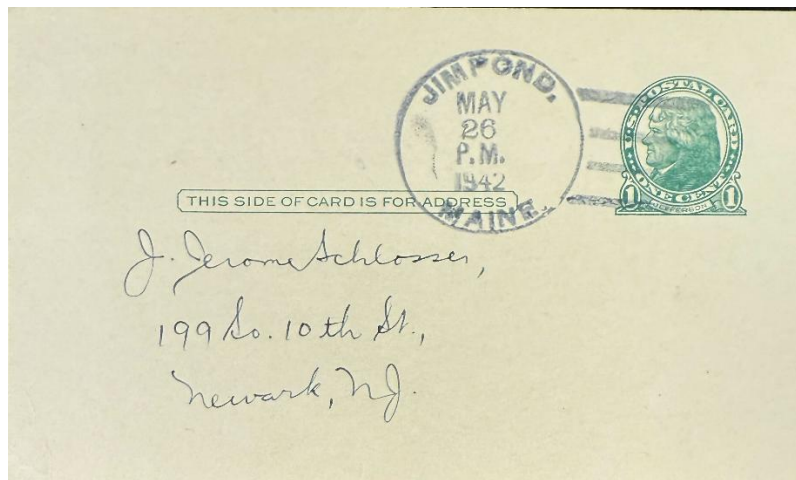
2 June 1920:

Mrs. Sarah J. A. Green became the Postmaster of the Jimpond Post Office.



1 August 1935:

The circular postmark is 32 mm in diameter with a four-bar D killer.



26 May 1942:

The circular postmark is 32 mm in diameter with a four-bar F/1 killer.

11 April 1945:

Jimpond Post Office closed effective 30 April 1945 with service from Eustis. However, the post office did not open for the 1943 and 1944 seasons. Thus, the effective last day was 1 October 1942.

Credits:

This document is based on the original web page compiled by the V. F. Thomas Co. (2021), with revisions and additions by James Husson and Brian Damien (2024).

Thank you for the contributions to this page by Jim Husson.

Thank you to the Waterville Stamp Club (<https://thewatervillestampclub.com>) for helping ensure this project's continuity.

Sources, Jim Pond History

Kimber, Robert. "Big Jim," in *The Missouri Review*, Spring 2008, pp. 34-53; also appears in Wesley McNair's anthology, *A Place Called Maine: 24 Authors on the Maine Experience*, Downeast Books, 2008, available via Maine interlibrary loan network, <https://minerva.maine.edu/record=b2540450~S71>

U. S. Geological Survey Topographic Quadrangle Map Chain Ponds, Maine.
https://ngmdb.usgs.gov/ht-bin/tv_browse.pl?id=8b191a379bedae9ca969e071e4b50dba
Most of Jim Pond Township, including location of camps and post office, appears on this map.

Sources, Postal History

Maine Postal History Gateway at Maine Philatelic Society:
<https://www.mainephilatelic.org/mph>

The Post Offices of Maine 2022, Maine Philatelic Society:
<http://www.mainephilatelic.org/books/TPOOMK>

National Archives Catalog, Postmaster Appointments for Franklin County, Maine:
<https://catalog.archives.gov/id/78746541>

Records of the U. S. Post Office Department: Reports of Site Locations; Franklin, Hancock Counties, Maine:
Jimpond: <https://catalog.archives.gov/id/68415820?objectPage=138> and three following pages

The Digitised U. S. Postal Bulletins and PL&Rs 1880—2013
<http://www.uspostalbulletins.com/>

Additional material, including links to official records of postmaster appointments, can be found at Sources for Researching Maine Post Offices, Postmasters, and Postal History:
<http://www.mainephilatelic.org/books/post-office-sources.pdf>.

Sources, Postmarks

Sanders, Christine, The 4-Bar Postmark of the USPS, PMCC Bulletin Reprinted Article, Original Publication Date: June, July & December 2012.
http://www.postmarks.org/resources/PMCC_FourBarCancelsUSPS.pdf