

Chain of Ponds (T2 R6 WBKP) Postal History

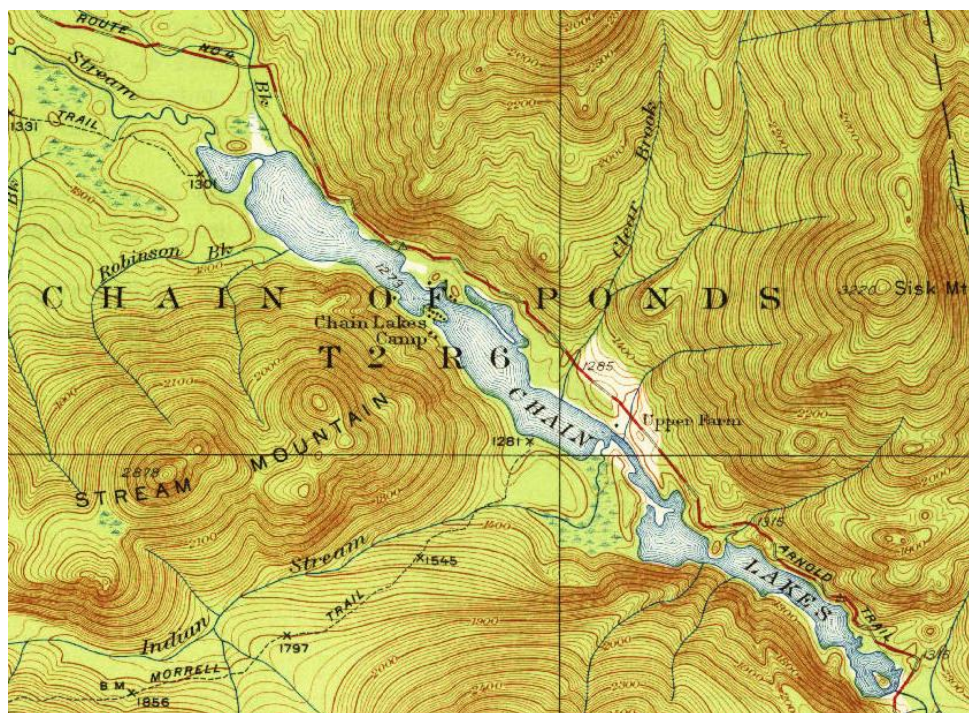
Franklin County, Maine

Last update for this page: 24 January 2025

This page is part of the Maine Postal History website—a project of the Maine Philatelic Society.
For more information, see <https://www.mainephilatelic.org/mph>.

There was only one post office in Chain of Ponds Township:

1. [Chain of Ponds](#) Post Office opened on 3 September 1909 and closed on 31 May 1911. It was a summer post office only. It appears that the post office here was desired as a service to the clientele of Megantic Fish and Game Corporation's Chain Lakes Camps.



Paperwork submitted to establish the post office at Chain of Ponds was submitted in 1908 by Alvah Berry, who signed as Superintendent of the Megantic Fish and Game Corporation, which operated Chain Lakes Camp, the most plausible location for the post office in the Township. The highway shown on the north side of the Chain Lakes is now known as Route 27, which leads to the border at Coburn Core.

Source: Detail from U. S. Geological Survey Topographic Quadrangle Map, Chain Lakes, Maine, 1935.

https://ngmdb.usgs.gov/ht-bin/tv_browse.pl?id=f1ef18452577e6e5928aa81286d8cb81

T2 R6 WBKP is an abbreviation for Township 2, Range 6, West of Bingham's Kennebec Purchase.

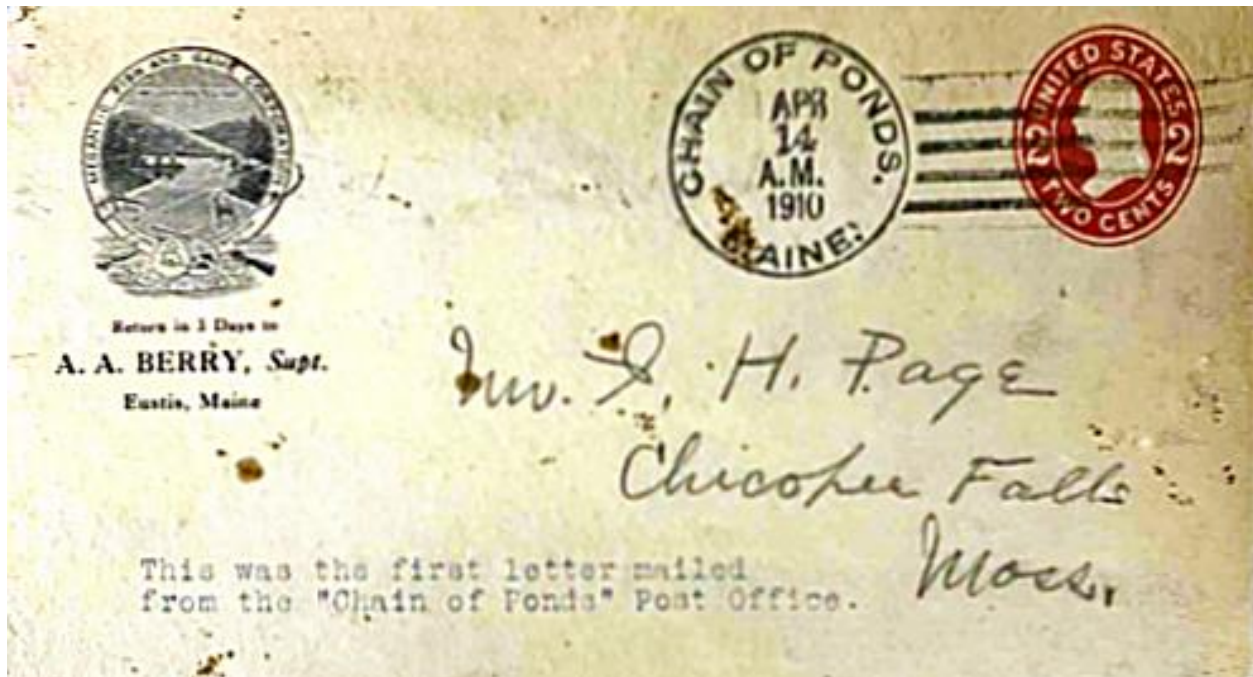
Chain of Ponds

3 September 1909:

Chain of Ponds Post Office opened as a summer post office.

3 September 1909:

Alvah A. Berry became the Postmaster of the Chain of Ponds Post Office.



14 April 1910:

The circular postmark is 32 mm in diameter with a four-bar A/2 killer.

31 May 1911:

Chain of Ponds Post Office closed with service from Eustis.

Credits:

This document is based on the original web page compiled by the V. F. Thomas Co. (2021), with revisions and additions by James Husson and Brian Damien (2024).

Thank you for the contributions to this page by Jim Husson.

Thank you to the Waterville Stamp Club (<https://thewatervillestampclub.com>) for helping ensure this project's continuity.

Sources, Postal History:

Maine Postal History Gateway at Maine Philatelic Society:
<https://www.mainephilatelic.org/mph>

The Post Offices of Maine 2022, Maine Philatelic Society:
<https://www.mainephilatelic.org/books/TPOOM>

National Archives Catalog: Postmaster Appointments for Franklin County, Maine
<https://catalog.archives.gov/id/78746541>

National Archives Catalog: Reports of Site Location, Franklin County, Maine
Link to image of application to open post office at Chain of Ponds
<https://catalog.archives.gov/id/68415820?objectPage=52>

The Digitised U. S. Postal Bulletins and PL&Rs 1880—2013
<http://www.uspostalbulletins.com/>

Additional material, including links to official records of postmaster appointments, can be found at Research Resources on Maine Postal History: <https://www.mainephilatelic.org/books/post-office-sources.pdf>

Sources, Chain of Ponds History

U. S. Geological Survey Topographic Quadrangle Map, Chain Lakes, Maine, 1935.
https://ngmdb.usgs.gov/ht-bin/tv_browse.pl?id=f1ef18452577e6e5928aa81286d8cb81

Megantic Fish and Game Corporation Map
<https://digitalmaine.com/maps/51/> Large map, very intense detail. Best to view before downloading; Can be downloaded but file is extremely large (385MB) and in tif format.

The Megantic Fish and Game Corporation [book]. In digital collection of Bibliothèque et Archives National du Québec. Gives a glimpse of life at the exclusive sportsmen's camps that some summer post offices existed to serve. Large file, but can be downloaded by choosing the print option, then "printing" to PDF file.
<https://numerique.banq.qc.ca/patrimoine/details/52327/2675059>

.

Sources, Postmarks

Sanders, Christine, The 4-Bar Postmark of the USPS, PMCC Bulletin Reprinted Article, Original Publication Date: June, July & December 2012.
http://www.postmarks.org/resources/PMCC_FourBarCancelsUSPS.pdf

<https://www.mainephilatelic.org/mph>