

Township 6 North of Weld Postal History

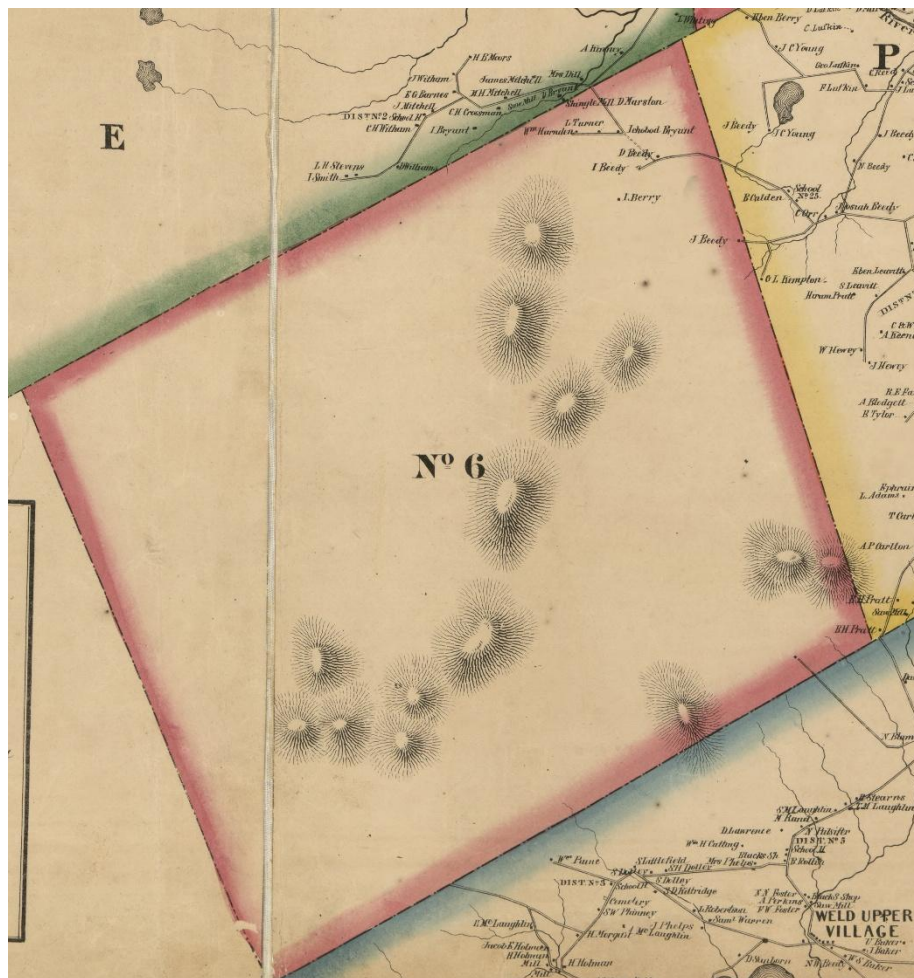
Franklin County, Maine

Last update for this page: 09/02/2025

This page is part of the Maine Postal History website—a project of the Maine Philatelic Society.
For more information, see <https://www.mainephilatelic.org/mph>.

The area known now as Township 6 North of Weld once included the Town of Berlin, which was organized in 1824 and de-organized in 1842. Reports show that there was at least one sawmill. There was also some farming – 2176 bushels of wheat were harvested in 1837 – but the town rapidly lost population, from 442 in 1840 down to 31 in 1870, and only 5 in 1940.

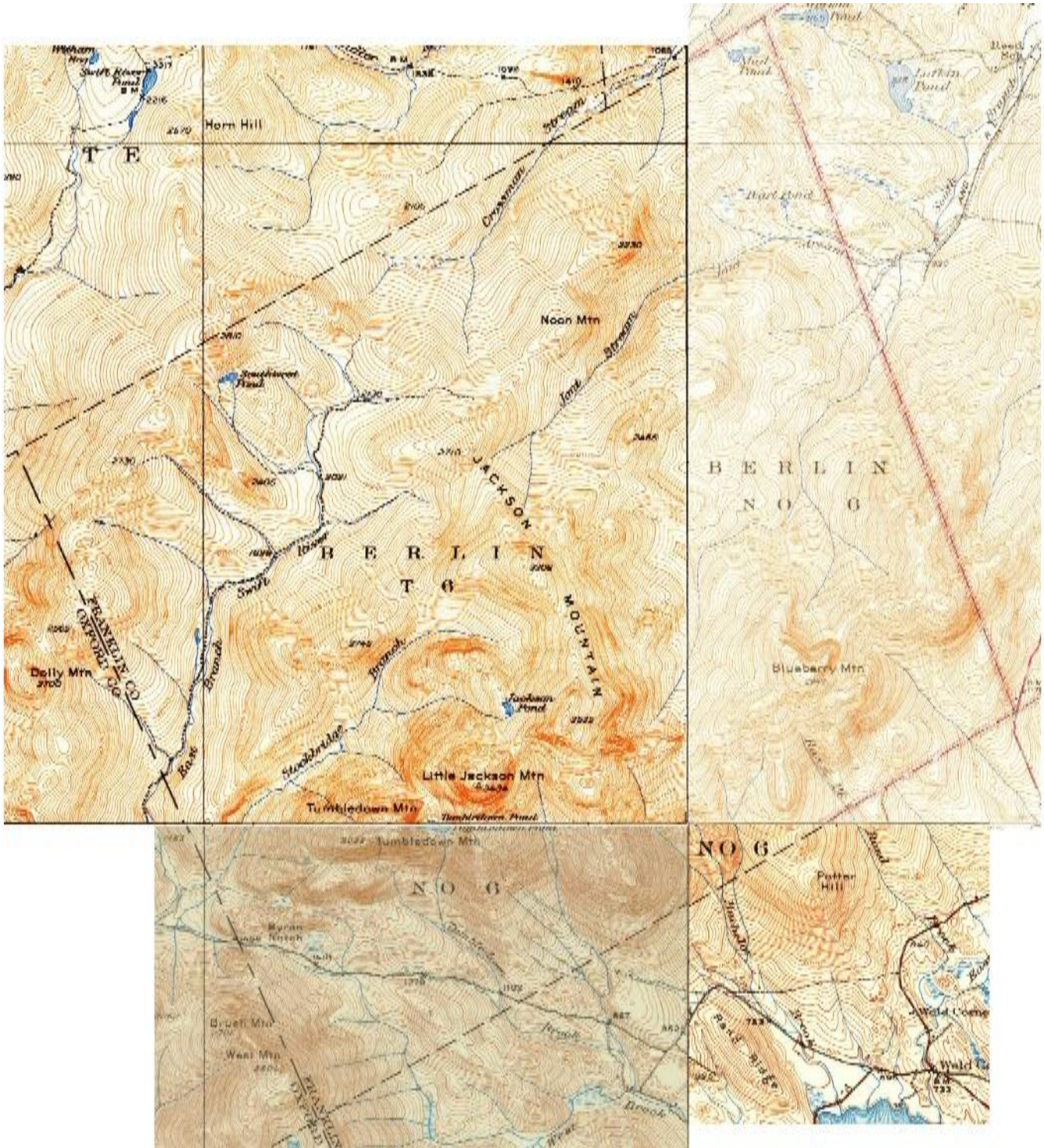
Briefly, there was one post office in Township 6 North of Weld: Berlin Post Office opened on 26 December 1832 as part of Oxford County and closed on 27 March 1833.



This depiction of Township 6, once known as Berlin, from the 1861 Topographic Map of Franklin County, Maine, by H. F. Walling, shows very little settlement, all in the northern corner of the town. Was this the center of and remainder of the original settlement which once had almost 500 people?

Detail from digital image of map from Library of Congress.

Source: <http://hdl.loc.gov/loc.gmd/g3733f.la000267>



This composite made from four adjoining topographic maps from 1929-1933 shows no trace of the original settlement of Berlin, which had a post office and a population of 478 in the 1830s. Today, Township 6 North of Weld is best known for Tumbledown Mountain, a very popular hiking destination. Links to the four maps used for this composite are in the Sources at the end of this document.

Berlin

26 December 1832:

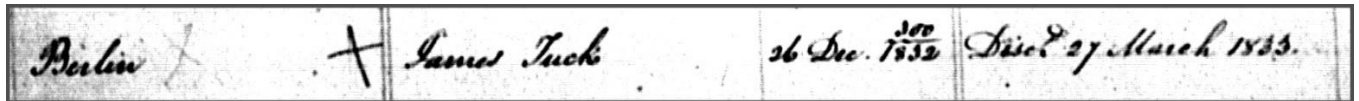
Berlin Post Office opened in Oxford County.

26 December 1832:

James Tuck became the Postmaster of the Berlin Post Office.

27 March 1833:

Berlin Post Office is closed.



Detail from the Postmaster Appointments of Oxford County, Maine. The office was open barely three months. Source: <https://catalog.archives.gov/id/78746776?objectPage=3>

Credits:

This document is based on the original web page compiled by the V. F. Thomas Co. (2021), with revisions and additions by James Husson and Brian Damien (2024).

Thank you to Kelvin Kindahl for his expertise in Postal History.

Thank you to the Waterville Stamp Club (<https://thewatervillestampclub.com>) for helping ensure this project's continuity.

Sources:

Postal History

Maine Postal History Gateway at Maine Philatelic Society:

<https://www.mainephilatelic.org/mph>

The Post Offices of Maine 2022, Maine Philatelic Society:

<https://www.mainephilatelic.org/books/TPOOM>

Postmaster Appointments

For help researching postmaster appointments see the Finding Aid for U. S. Postmaster Appointment Records, 1789-Present, <https://www.mainephilatelic.org/pma-findingaid.pdf>.

Postmaster Appointments for Oxford County, Maine; page including appointment for Berlin: <https://catalog.archives.gov/id/78746776?objectPage=3>

Note that this office and the entire Township 6 was located in Oxford County at the time the post office was in operation. The area became part of Franklin County when it was founded in 1838.

Additional material, including links to official records of postmaster appointments, can be found at Research Resources on Maine Postal History: <http://www.mainephilatelic.org/books/post-office-sources.pdf>.

Township 6 North of Weld History

"Town of Berlin Record Book" (2019). *Berlin Books*. 1. https://digitalmaine.com/berlin_books/1 Digital reproduction of original handwritten town records from 1820s-1830s.

Counties, Cities, Towns and Plantations of Maine: A Handbook of Incorporations, Dissolutions, and Boundary Changes. Maine State Archives, 1980. https://digitalmaine.com/arc_publications/11/

A limited amount of basic information about businesses in Township 6 North of Weld (aka Berlin) can be found in old editions of the *Maine Register*, which can be found in many larger Maine libraries.

Census data for Berlin and for Township 6 for 1890-1930 is available from the website of Fogler Library at the University of Maine: <https://library.umaine.edu/govdoc/Census/Census%20Population%201790%202000.pdf>

The New England Gazetteer, by John Hayward, 1841. Brief entry on Berlin. Digital version available via the Internet Archive: <https://archive.org/details/newenglandgazett00lchayward/page/n55/mode/2up>

Township 6 appears on the 1861 Topographical Map of Franklin County, Maine, by H. F. Walling. The portion of the map showing Township 6 is reproduced on the first page of this document.

Topographic map quadrangles from the 1930s show the Township a hundred years after the beginning of its decline. The portions of these maps showing Township 6 have been assembled as a composite on page 2 of this document.

Dixfield 1929

https://ngmdb.usgs.gov/ht-bin/tv_browse.pl?id=094bc5f3c265a2c491aae482506e038e

Rangeley, 1933

https://ngmdb.usgs.gov/ht-bin/tv_browse.pl?id=1749de9be7b0682e719881e955ac35e2

Phillips 1932

https://ngmdb.usgs.gov/ht-bin/tv_browse.pl?id=cc7ebccedc365a86d5be776d674a5a9b

Rumford 1930

https://ngmdb.usgs.gov/ht-bin/tv_browse.pl?id=cb6db069d2c29df53641caf3ebad42a5

Disclaimer:

As with any database of this size, occasional errors—especially typos—are inevitable. Every effort has been made to ensure the accuracy of this work and to correct any mistakes made by previous authors. We take full responsibility for any errors and encourage you to bring them to our attention so that we can make the necessary corrections.