



The Maine Philatelist

Vol. 39, No. 4

April 2007

Whole No. 147

Stamp collection awarded to young collector

By Max Lynds
President

Those of us who have collected stamps and postal history for a few years have noticed very few young people entering the hobby. While we can call this a sign of the times, it is indeed a fact. Late last year, a gentleman from Portland, 68-year-old George Neavoll, contacted me and explained that he had published an ad in the local papers asking for anyone aged 10-15 to write an essay explaining why they should be the recipient of his stamp collection. George had started collecting at the age of 10 and became impassioned with the hobby.

George would soon be moving to Oregon and wanted to give his collection that he described as "a boy's collection cherished and expanded by that 'boy' for close to 60 years" to someone who would carry on his passion to learn from stamp collecting. He received one response. He did award that person some of his material but was most disappointed that he had not received more responses. Mr. Neavoll contacted me and asked if I knew of anyone fitting his criteria.

After asking a few people I actually found a young lady soon to be 15 years old living in Weston. One of the people working in my office (a 22-year-old stamp collector!) knew of this home-schooled girl who attended her church. I asked the 22-year-old to ask the 15-year-old if she would be really interested in receiving a substantial amount of stamps for her collection.

Esther Stearns was the young lady interested, and she wrote a 300 word essay as to why she collected stamps and Mr. Neavoll sent me this email:

"Hi Max, You put me in touch with a winner when you passed my stamp essay info on to 15-year-old Esther Stearns of Weston! The essay she wrote reflected exactly the kind of youngster I was looking for: one with a natural curiosity about

the world around her, and a desire to learn about it by means of the little pieces of paper borne on the world's mail. I can't thank you enough, Max, for helping me with this. I'm afraid, without your help, I would be carrying my collection off with me to Oregon. All the best, George."

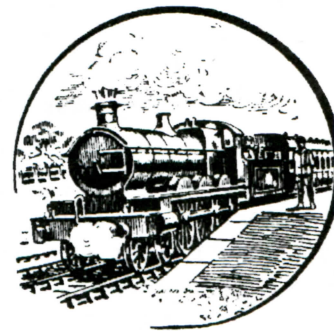
Hopefully we have a future member of Maine Philatelic Society in the making!

"Milk Train" really does mean slowest way

By Dr. George Bostwick
Of Nobleboro

A post card showing a picture of Bean's ferry across the Androscoggin River in Bethel sports a cancellation reading "PORT. & ISLD. POND R.P.O." and is dated "AUG 24 1907 TR.6." The card is addressed to a woman at Poland Camp Grounds in East Poland, Maine.

This RPO marking brings back memories of my trip in December 1946 from Montreal, Quebec to Mechanic Junction, Maine, on the Grand Trunk Railway (GTR). I had joined the Navy in early 1945 "to see the world" and had seen Bainbridge Naval Training Station and the Brooklyn Navy Yard by the time of discharge. Servicemen in uniform could travel half-fare on railroads, and so I spent half my terminal leave visiting eastern Canada and was returning home by way of a visit to family friends in Maine.



Continued on page 3

The Maine Philatelist is published quarterly by the
Maine Philatelic Society, Inc.

Website: <http://www.maxlynds.com/mps.htm>

The purpose of the Society, a non-profit Maine corporation, is to promote philately in the Pine Tree State. Membership is open to anyone. Membership applications are available from the Secretary, listed below.

Dues are \$5.00 per fiscal year (ending in June).

Life Membership is also available.

Articles for publication should be sent to the
Editor at address below.

OFFICERS

President

Mr. Max Lynds

P.O. Box 761

Houlton, ME 04730-0761

email: max.lynds@FAPeabody.com

Vice President

Mr. Bruce Hazelton

P.O. Box 67A

Cumberland Center, ME 04021

Secretary

Dr. George W. Bostwick

155 Moodys Island Rd.

Nobleboro, ME 04555-9512

Treasurer

Mr. Rick Stambaugh

18 Elmwood Ct.

N. Berwick, ME 03906

email: rstambaugh@maine.rr.com

BOARD OF DIRECTORS

Robert E. Barker of Warren

John Engle, M.D. of Waterville

Dan Goodwin of North Berwick

Donald F. Hunt of Owl's Head

Daniel LaPointe of Van Buren

Paul Romanelli of Houlton

James Violette of Nobleboro

EDITOR

Dr. Everett L. Parker

719 Moosehead Lake Road

Greenville, ME 04441-9727

email: eparker@hughes.net

PUBLISHING SCHEDULE

The Maine Philatelist is distributed to members in January, April, July and October of each year. Below is a list of deadlines for each issue and the anticipated mailing date. While deadline for copy (articles) is firm, the anticipated mailing date is just that -- a "best guess" of mailing.

ISSUE COVER DATE	DEADLINE FOR COPY	JOURNAL TO PRINTER	ANTICIPATED MAILING DATE
January	Dec. 15	Dec. 30	Jan. 15
April	March 15	March 30	April 15
July	June 15	June 30	July 15
October	Sept. 15	Sept. 30	Oct. 15

Maine stamp club meetings



Stamp clubs in Maine are invited to become members of the Maine Philatelic Society. We will publish, free of charge, meeting information and locations.

WATERVILLE STAMP CLUB

The club meets on the first and third Friday from September to May and on the third Friday only during June, July and August. Meetings are from 6:30 to 9 p.m. at the Kennebec Valley Technical College (KVTC) on Western Avenue in Fairfield (Exit 35 of Interstate 95). For information, call 872-5107. Nonmembers are invited to attend.

YORK COUNTY STAMP CLUB

The club meets on the second and fourth Thursday of each month beginning at 7:30 p.m. at the Sanford Masonic Hall, Elm Street, Sanford. Usual events include raffle, auction, presentations, refreshments, and an occasional visit from a stamp dealer. Dues are \$5 per year. For information, contact Secretary Tracey Levasseur, 329 Ross Corner Rd., Shapleigh, ME 04076.

UNION RIVER STAMP CLUB

The Union River Stamp Club meets the third Thursday of each month from April through November at the Ellsworth Library, beginning at 6:30 p.m. For information, contact Eric Beal at 827-2686 or Eric.Beal@umit.maine.edu.

KENNEBEC VALLEY STAMP AND COLLECTOR CLUB

The Kennebec Valley Stamp and Collector Club meets the first and third Tuesday of each month at the Central Maine Power Company headquarters on Edison Drive in Augusta. Meetings are from 6:30 to 8:30 p.m. For additional information, call Shirley MacKay at 622-7978, or contact by email at kildonan@gwi.net.

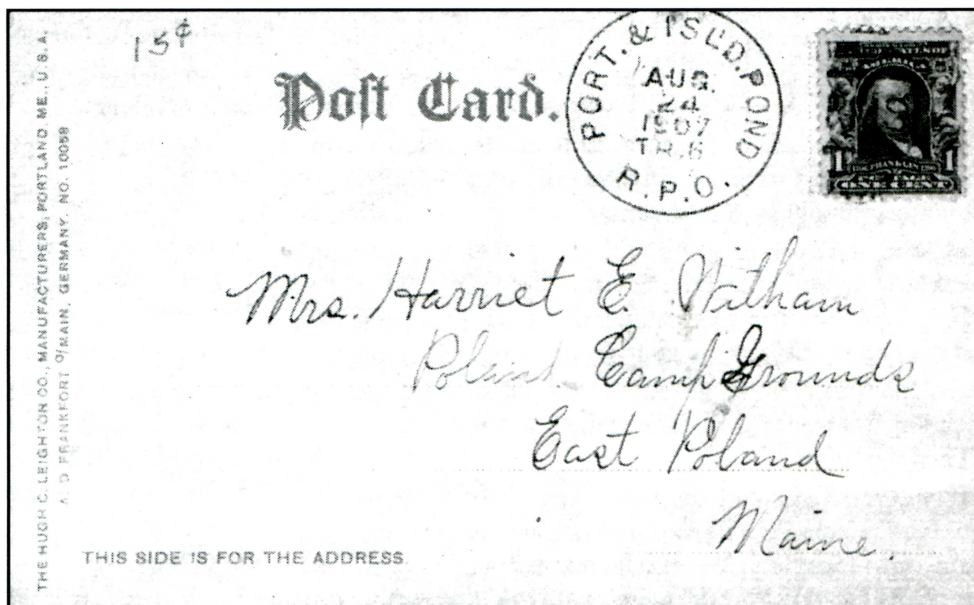
Classified

WANTED: SWAP OR TRADE: U.S., Israel, Bahamas for Washington & Franklin 1910-1933, mint, NH & OG, Scott #379-577. List your wants, send me a card! Dick Carvel, 126 Stroudwater Rd., Portland, ME 04102 (telephone 775-0915) (4-06)

Taking the "milk train" meant a long trip

Continued from page 1

"Milk Train" used to be a synonym for "the slowest way to get there," and this train did stop at every snow-covered dirt crossroad to pick up those hundred pound milk cans from platforms by the tracks, all the way across the fascinating scenery of the Eastern Townships to Sherbrooke, then south to Norton and Island Pond, Vermont, across Vermont and New Hampshire through Berlin, and into Maine via Bethel, Bryant Pond, Norway, and to Mechanic Junction, the link to Auburn on the Maine Central Railroad. The Grand Trunk then continued down through Falmouth and across Tukey's Bridge to the Portland Union Station on St. John Street.



An August 24, 1907 post card to East Poland, Maine, with a "PORT. & ISLD. POND R.P.O." cancel.

The Grand Trunk was incorporated on November 10, 1852 to build a line between Montreal and Toronto; then the charter was extended east to Portland. In 1853, the Grand Trunk bought the St. Lawrence & Atlantic (from Montreal to Island Pond) and the Atlantic & St. Lawrence (from Island Pond to harbor facilities in Portland).

to Yarmouth opened in July 1846, then to Danville in January 1848; to Paris, June 1850; to Bethel, March 1851; to Gorham, July 1851; to Northumberland, July 1852; and Island Pond, January 1853. Regular operations between Montreal and Portland began on April 4, 1853.

The Atlantic & St. Lawrence Railroad was chartered in Maine on February 10, 1845, in New Hampshire during July 1847, and in Vermont during October 1848. The line from Portland

The line was converted from Provincial Gauge (five feet, six inches) to Standard Gauge about 1873. Grand Trunk was nationalized in the early 1920s because of bankruptcy, and was merged with Canadian National Railways. Revenues declined after an oil pipeline from marine terminals in Portland to refineries in Montreal was built alongside the Grand Trunk route. In 1989, the new St. Lawrence & Atlantic Railroad Company took over operations from Portland to Island Pond, and later extended it to the border at Norton, Vermont.



View side of the 1907 post card to East Poland. The photograph shows Bean's Ferry across the Androscoggin River in Bethel.

A postal card sent from Berlin, New Hampshire to Millinocket on TR 16 (Train 16) on July 29, 1949 was cancelled "PORT. & BDY. LINE." Perhaps someone knows whether the "Boundary Line" was Norton or Island Pond?

Continued on page 8

Passion at MAIPEX '06

By Rick Stambaugh
Of North Berwick

"The most boring hobby is stamp collecting," Dan Goodwin said to a bunch of us discussing the exhibits at MAIPEX '06. As you can imagine, that statement got lots of reaction. We postulated that you have to be a stamp collector to understand how wrong that perception is.

MAIPEX '06 was an eye opener to me, making it clear that many people are passionate about stamp collecting. I realized from discussions and observations that actively participating in stamp clubs, stamp shows, and exhibitions helps to keep the passion alive.

First, it was fun watching the York County Stamp Club members bring in the frames and put up the exhibits. Their teamwork, industriousness, and humor were contagious. There was plenty of good-natured banter with the surrounding dealers that John Flaherty organized.

Next, the exhibits were wonderful. Every exhibit showed originality, passion and research. Dr. George Bostwick's "Cross Roads" exhibit stuns you with its research. Reading his exhibit is better than going to a seminar on the Mid-East. The material is one of a kind, and his write-up provides the history and significance in a way that anyone can appreciate. Max Lynds' "Aroostook County Postal History" exhibit wowed me. I had to run to Max with questions inspired by his material and research.

The "60th Anniversary of Pacific WWII" exhibit by Dan Goodwin showed not only research, but also imagination and persistence. Amazingly, his exhibit consists of covers he created at just the cost of an envelope and a 37 cent stamp. Yet, it is significant, informative, and entertaining. Dan studied World War II events in the Pacific, then researched the ships involved, and if there is a current ship with the same name. He sent covers he created with event specific cachets to get ship cancels on the anniversary date.

Joe Zucco provided an exhibit of Brooklyn Bridge postcards. Besides learning construction details (like how many miles of wire are in each cable bundle), viewers saw many pretty photos from various locations. This exhibit clearly showed the passion Joe has for the bridge by his birthplace and home.

Besides the exhibits, the passion of some collectors was evident from discussions. Talking with show attendees, I learned their interests and got a sense of if they were passionate about stamp collecting. The passionate stamp collectors describe multiple ways they search and find items related to their collections. They're not just checking off a list of album spaces to be filled. The passionate collectors are talking to

dealers and other collectors at dealer tables, relating experiences and enjoying the camaraderie with other stamp and cover collectors.

Yup, the MPS show was clearly a success from my perspective:

1. We broke even financially (thanks to John Flaherty donating the refreshments).
2. There were seven dealers, so every collector should have been able to obtain new material for their collections. (I got two large parcels of precancels to go through, and some stuff for my topical collections.)
3. The exhibits were special, and;
4. The show helped me, and hopefully others, realize how much fun our hobby is if you get passionate about it.

Free souvenir stamps!

A recent USPS Philatelic Catalog contained a post card offering a "complimentary Philatelic Souvenir." Naturally, I returned the card and awaited my souvenir. In several weeks, I received a nine by 12 inch envelope with my souvenir. Well, it actually was a fancy brochure peddling "national treasures" and a tiny envelope with my souvenir labeled "U.S. Postage Stamps Guaranteed to be 60 years or older."

While this was disappointing, I was further dismayed upon seeing that one of my "60 years or older" stamps was an eight-cent Eisenhower stamp issued only 35 years ago! But, it did get laughs from stamp club members at our next meeting.

-- Rick Stambaugh
North Berwick

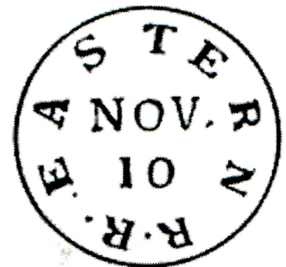
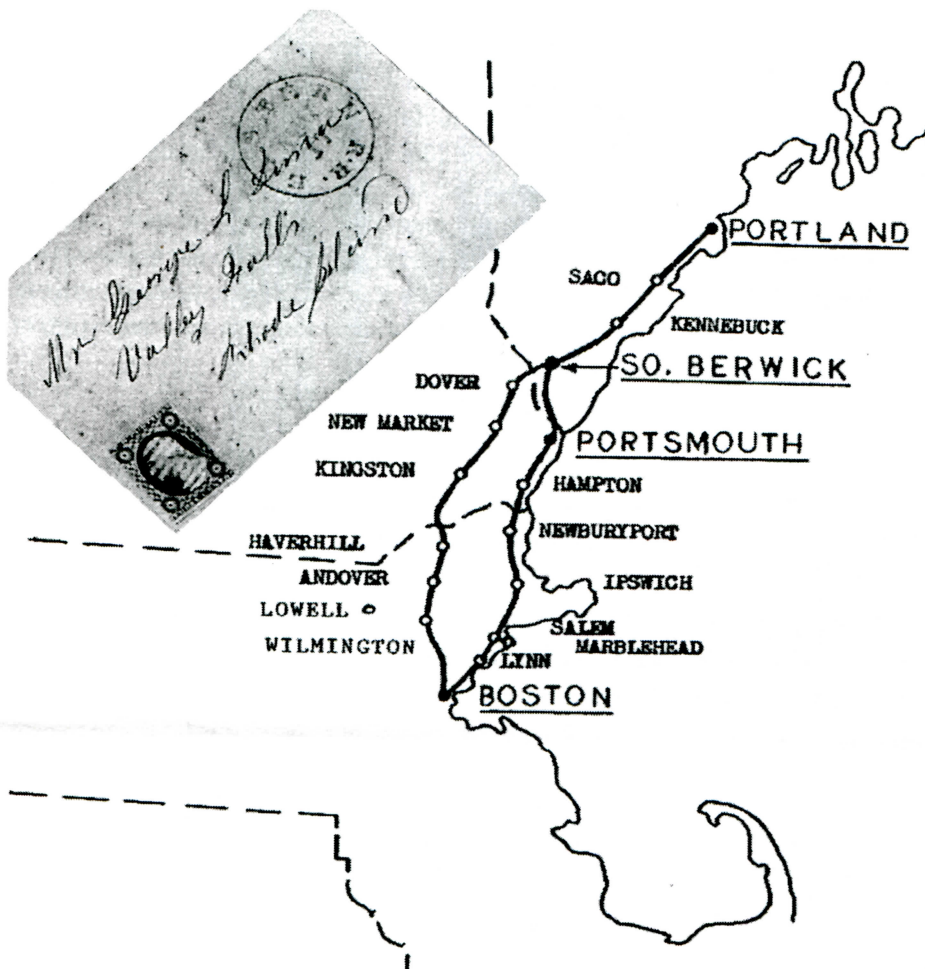
Waterville stamp show

The Waterville Stamp Club will present its
stamp show and auction on
Saturday, April 21, 2007
9 a.m. to 3 p.m.

Winslow VFW Hall
Dunbar Road at Route 32
(just past Liberty Square Restaurant;
follow signs for VFW)
Free Admission!
50-50 Raffle
Dealers!

For information, call 426-8457

Boston & Portland Railroad Mail Routes



Transit marking on the folded letter cover is Remele #E3-b (shown above in tracing with different date for clarity). The cover here with map at left was serviced on Aug. 17, 1852 (year date taken from text on inside of the cover).

On this route, the Post Office Department contracted with the railroad company as various sections of this road were completed and at the same time discontinued the like portion of the stage contract. It is worthwhile to note that the date of initiating a mail contract with the railroad company did not always agree with the opening of a particular section of the road. Some six months after the opening of the road, the Eastern Railroad Company commenced carrying mails between Boston and Salem. On April 1, 1839, the railroad contracted to carry the great mail daily as well to three additional daily mails, except on Sunday, supplying Lynn and Chelsea en route at the rate of \$2,721 per year. This amount was \$1,000 more than paid the stage company, which was compensation for the additional daily trips. However, when this route started, Chelsea was omitted at a reduction of \$100, making the compensation \$2,611 per year, which amount is verified by the Official Register of 1839.

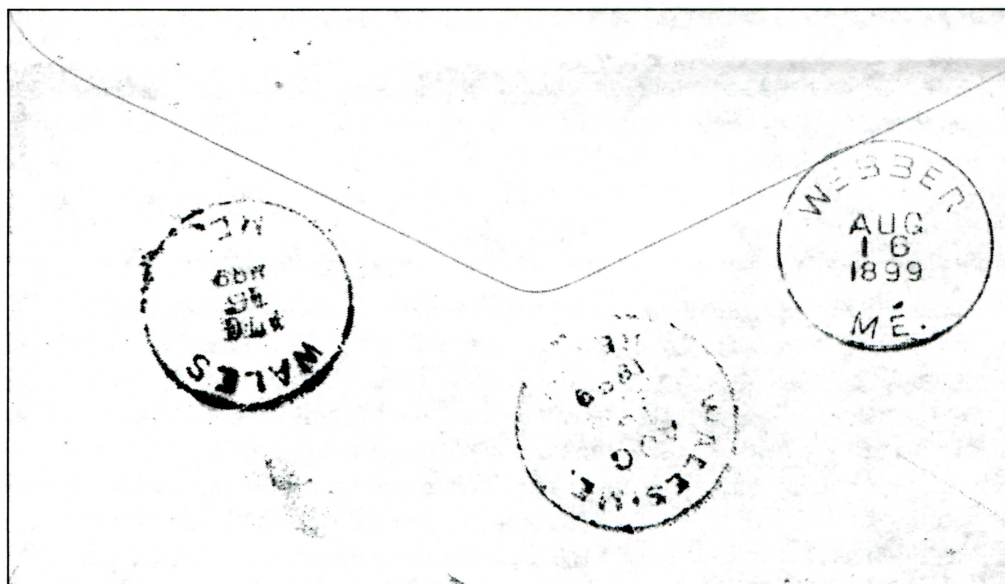
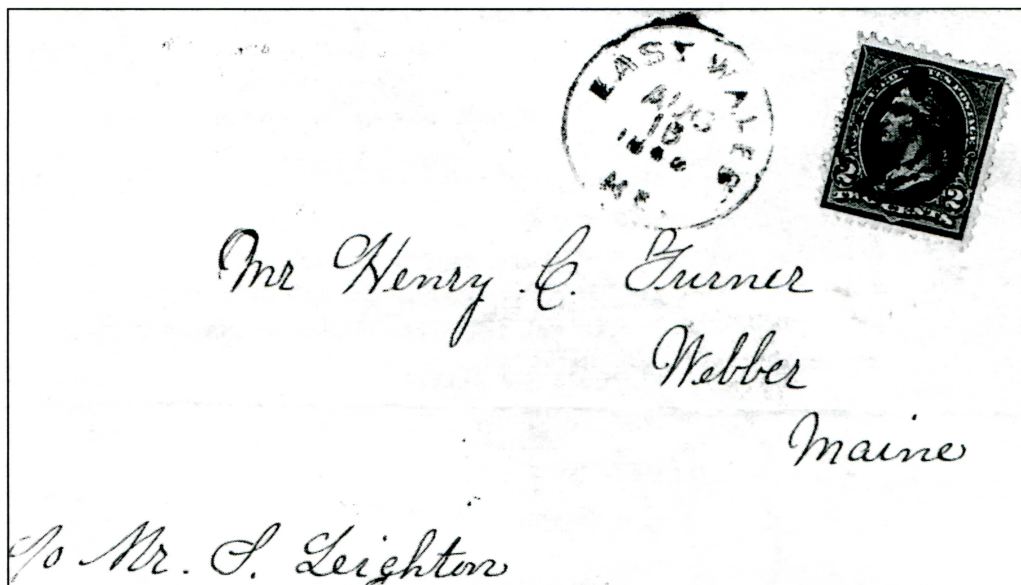
The next railroad extension was to Newburyport on July 1, 1840. This was almost two months prior to the completion of the roadbed to Newburyport. The stage company curtailed its service on the above date, thus the railroad company must have provided coach transportation for the mails from the end of the track or some other convenient point on the route to Newburyport until August 27 when this section was finished. On this extension of 25 miles, only 13 trips weekly carried mail.

The stamp on the letter cover above is believed to be a U.S. Scott No. 10 imperforate three-cent Washington orange-brown (design A10) variety, cancelled with a seven-bar oval killer with the same blue ink as the Eastern R.R. transit marking.

(This article originally appeared in the March-April 2007 issue of The Dispatcher, a publication of railroad philately published by the Casey Jones Rail Road Unit of the American Topical Association (ATA), and is reprinted with permission. For information about the study unit, contact Editor Norman E. Wright Sr., 33 Northumberland Rd., Rochester, NY 14618-2405 (email: normaned@rochester.rr.com).

***M**aine Cover of the Quarter*

*A postal history feature
by Rob Washburn
of Skowhegan*



The above cover (front and back are shown) features three different discontinued post office cancels: on front, East Wales (1856-1901, rarity rating 7); on back, two different types of Wales (1824-1901, rarity rating 5), and a scarce Webber (1898-1904, rarity rating 8). All four cancellation dates are August 16, 1899.

(If you have an unusual, scarce or interesting Maine cover for Maine Cover of the Quarter, please send a photocopy of your cover against a black background to Rob Washburn, P.O. Box 840, Skowhegan, ME 04976).

Letters

Rarity guide

To the Editor:

Relating to the rarity guide, Halls Mills in Washington County is shown as a 10. This isn't a cover, but at least one postmark does exist from the place. It is in one of the collections at the Post Mark Collectors Club Margie Pfund Memorial Postmark Museum in Bellevue, Ohio.

It may be unfortunate, but the reality is that there was a time when cutting was the standard, and there are postmarks out there in the world which aren't on cover. This is one of them. The museum maintains collections of cut postmarks, in addition to the primary cover collections, largely for that reason.

Kelvin Kindahl

East Hampton, Massachusetts

(EDITOR'S NOTE: *The Post Offices of Maine: A Rarity Guide*, published by The Maine Philatelic Society in 1995, lists Halls Mills in Whiting. The post office opened on July 6, 1915, and closed on May 30, 1918. It has a rating of 10.)

Secretary's Report Dr. George Bostwick Secretary

NEW MEMBERS

Mr. Bobby J. BARNHART, 10 Larry Ln., Brunswick, ME 04011

Mr. Julien P. GOSSELIN, 426 Pleasant St., Lewiston, ME 04240

EMAIL ADDRESSES

New email addresses added below.

I am sad to report that 17 of our members have been dropped from our roster because of non-payment of dues. However, we do have one new member and one (Mr. Gosselin) who rejoined after a hiatus.

The Executive Committee will hold a brief meeting at the Waterville Stamp Club show in Winslow on April 21.

*It's almost dues time again -- if your label shows (6-07),
you can send in dues now to the Secretary.
Please send dues ONLY to the Secretary!*

Are YOU on the Internet?

Here is a list of MPS members with e-mail

Albert Aldham
cancels@ptd.net
Joe Antizzo
JAntizzo@yahoo.com
Louis C. Bakula
grampsusn@aol.com
Robert (Bob) Barker
rebarker@rebarker.com
George Barner
georgebarner@adelphia.net
Al Barth
cfecat@adelphia.net
Dr. George Bostwick
bostwick@midmaine.com
Chuck Brand
shakerdom@hotmail.com
Tom Cieslinski
tomciesl@midmaine.com
Gary Clark
gclark1@tampabay.rr.com
Nancy B. Clark
nbc@Cape.com
Mona Anne Clark
philatelist@ghi.net
Norman R. Cleaves
NCLEAVE1@comcast.net
David Costain
dcostain@midmaine.com
Christopher Coyle
uppereustis@yahoo.com
Roger Curran
rdcnrc@evenlink.com

Elwyn J. Doubleday Jr.
elwyn@elwyndoubleday.com
Dr. John Engle
johnengle@mac.com
Jim Forte
jimforte@postalhistory.com
Dan Goodwin
dgoodwi3@maine.rr.com
Robert Gross
bobgrossrcr@adelphia.net
Elmer Harmon
afgecutler@maineline.net
Stuart Haskell
GCH127@aol.com
Gary W. Hibbard
ghibbar1@maine.rr.com
Terence Hines
TerenceHines@aol.com
Steven J. Hogan
smhogan@comcast.net
Alf Jordan
ajordan1@maine.rr.com
Kelvin Kindahl
Kelvin01027@charter.net
Dick Laetsch
precancel@aol.com
Steve LaForge
stephenlaforge@netscape.net
Rick Lancaster
modcover@ghi.net

James Larsen
larsenj@c2i2.com
Philippe C. Lebel
PClebel@netzero.com
Rev. Robert Leon
bobleon@tabletoptelephone.com
Max Lynds
max.lynds@FAPeabody.com
Shirley MacKay
Kildonan@verizon.net
Roger A. Madore
pianomanpj@aol.com
Paul R. Maynard
Maynard25@Charter.net
Vince McDermott
vjmcdermott@aol.com
Andrew J. Moran
amoran66@yahoo.com
Ed Muzzy
edmuzzy17@aol.com
Bruce D. Nelson
landmarkpc@aol.com
Paul J. O'Halloran
ohalloranpj@verizon.net
Robert W. Olmsted
cal@americanletters.org
Phil Peverada
peverada@midcoast.com
Thurlow Pitts
antares23@hypernet.com
Jack Pooler
car99@comcast.net

Steven Pottle
sppride@aol.com
James J. Quinn
clarkisle@aol.com
Gil Roderick
destamps@acadia.net
Michael Roy
Mroy3@maine.rr.com
William W. Sammis
cds13@cornell.edu
Art Scarano
a.j.scarano@att.net
Barry Serpell
serpellmaine@aol.com
Roland Simard
manacorp20@suscom-maine.net
Henry Stevens
hstevens@stamps.win.net
Ron Stewart
ronstewa@localnet.com
Henry G. Turnbull
AZNPHTGT1@webtv.net
Edwin F. Whitney
edfwhitney@yahoo.com
Richard Williams
richwilljr@adelphia.net
Kennedy L. Wilson
k-mew@midcoast.com

Taking the "milk train" meant a long trip

Continued from page 3

REFERENCES

Google searches:

Maine Central Railroad page, © Jonathan N. White.

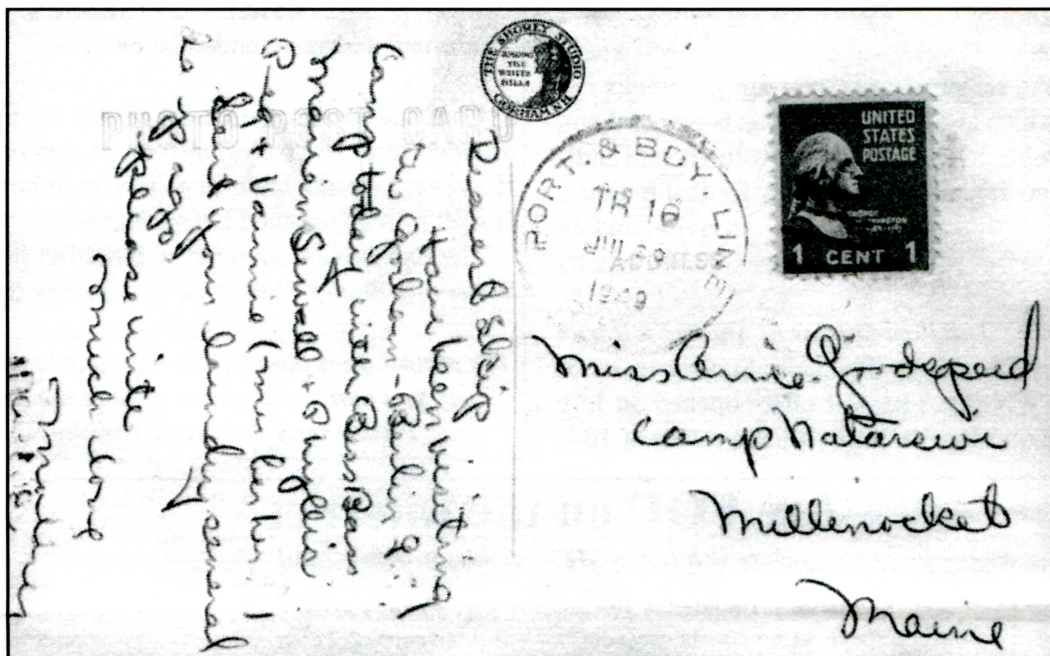
Maine Central Railroad Company, *Encyclopedia of Company Histories*.

Wikipedia: Grand Trunk Railway.

Wikipedia: St. Lawrence & Atlantic Railroad.

Wikipedia: Answers.com: Maine Central Railroad.

A History of Railroads in Maine, Ken Anderson.



A 1949 post card to Millinocket with "PORT. & BDY. LINE" datestamp.

Maine Philatelic Society
719 Moosehead Lake Rd.
Greenville, ME 04441-9727

TO:



IMPORTANT NOTICE:
If (6-06) appears after your name on the mailing label, it's time to renew your dues!