



The Maine Philatelist

Vol. 35, No. 2

October 2002

Whole No. 129

It's time to head to Houlton for our fall show!

It's become an annual fall tradition, and an international one at that! The Maine Philatelic Society will sponsor SPUDPEX 2002 at the Houlton Gentle Memorial Building (Houlton Recreation Center) on Main Street in Houlton on Saturday, October 12. The entrance is actually off Pleasant Street by the tennis courts, and there will be signs pointing the way to the event.

There will be dealers on hand with stamps, postal history, post cards and supplies. A silent auction will end at 12:30 p.m., with items receiving five or more bids going to an oral auction at 1 p.m. Displays will include local postal history, and a special handstamp is planned for the event. Admission

will be free, and members and non-members are encouraged to attend.

This year's event will once again be coordinated by Max Lynds of our Board of Directors. He can be reached at 532-2291, extension 242, or by email at max@pwless.net if you have questions about the show.

Please plan on attending this special show. In addition to being Columbus Day weekend in the U.S. (and that means a three-day weekend for many), it's also Thanksgiving weekend in Canada, and a number of philatelists from "north of the border" are expected to be on hand for our annual stamp show. ☒

Your help is needed with Maine self-inking short killer bars

By Dan Goodwin
Of North Berwick

I wonder if there are some Maine Philatelic Society members who could offer help with a project. For some time I have been gathering data on the new self-inking short killer bar cancels in use in Maine. For lack of a better term, we are calling them "Maine Short Bars" ("we" includes Tom Sullivan of Hudson who helps when he isn't working or chasing golf balls).

So far we have identified two major types (single circle [Type 1] and double circle [Type 2]) with at least 10 variations from 51 Maine towns. The variations are identified by using lower case letters, *i.e.*, T-2bg. This is similar to the Locy system used by the Universal Ship Cancellation Society (I am a member) to classify cancels from ships.

We are also quite surprised at the widespread use of the new short bar self inking cancels in Maine. You don't see many unless you ask. Most small towns use them only for local mail. We have set a quite ambitious goal, that of polling all of the 400 plus post offices in Maine for examples of their new date cancellers. We specifically ask for the short killer bar cancel but if one is not available, we will be happy with whatever they provide.

We are maintaining a "Type Chart" and a list of towns with known short bar cancels and their types. This endeavor, in the long run, may be a waste of time. However, time is now my most abundant commodity and we both are enjoying the challenge.

I would like anyone interested in helping to send me a copy of new discoveries by email or USPS. What I have so far is available to anyone by email or USPS (postage appreciated). ☒

NOTE: See the Goodwin chart on page 5

It's dues renewal time for MPS!

Membership in the Maine Philatelic Society is on a calendar year, and since this is the last issue of 2002, you are reminded to send in your dues to Secretary Bruce Hazelton as soon as possible. We don't want to lose a single member, and hopefully you will want to continue receiving the latest news about philately in the State of Maine.

Dues remain at \$5 a year, although donations beyond the cost of membership are greatly appreciated, and can be used as a tax deduction. Check your membership label now to determine if you need to renew ! ☒

The Maine Philatelist is published quarterly by the Maine Philatelic Society, Inc.

Website: <http://www.ainop.com/users/max/mps.htm>

The purpose of the Society, a non-profit Maine corporation, is to promote philately in the Pine Tree State. Membership is open to anyone. Membership applications are available from the Secretary, listed below.

Dues are \$5.00 per fiscal year (ending in June).

Life Membership is also available.

Contact the Secretary for details.

Articles for publication should be sent to the President/Editor at address below.

OFFICERS

President

Dr. Everett L. Parker (2003)
719 Moosehead Lake Rd.
Greenville, ME 04441-9727
(207) 695-3163 (Voice and Fax)
e-mail - eparker@midmaine.com

Vice President

Mr. Jim Foote III (2002)
P.O. Box 16
Manchester, ME 04351-0016

Secretary

Mr. Bruce Hazelton (2003)
P.O. Box 67A
Cumberland Center, ME 04021

Treasurer

Mr. Rick Stambaugh (2002)
16 Elmwood Ct.
N. Berwick, ME 03906
e-mail - rickstambaugh@cybertours.com

BOARD OF DIRECTORS

Richard Warren of Cushing (dickw@midcoast.com) (2002)
Ray Gagnon of Lewiston (2002)
Max L. Lynds of Houlton (Max@pwless.net) (2002)
John E. Engle, M.D. of Waterville (jengle@mint.net) (2002)

PUBLISHING SCHEDULE

The Maine Philatelist is distributed to members in January, April, July and October of each year. Below is a list of deadlines for each issue and the anticipated mailing date. While deadline for copy (articles) is firm, the anticipated mailing date is just that -- a "best guess" of mailing.

ISSUE COVER DATE	DEADLINE FOR COPY	JOURNAL TO PRINTER	ANTICIPATED MAILING DATE
January	Dec. 15	Dec. 30	Jan. 15
April	March 15	March 30	April 15
July	June 15	June 30	July 15
October	Sept. 15	Sept. 30	Oct. 15

Maine stamp club meetings



Stamp clubs in Maine are invited to become members of the Maine Philatelic Society. We will publish, free of charge, meeting information and locations.

WATERVILLE STAMP CLUB

The club meets on the first and third Friday from September to May and on the third Friday only during June, July and August. Meetings are from 6:30 to 9 p.m. at the Kennebec Valley Technical College (KVTC) on Western Avenue in Fairfield (Exit 35 of Interstate 95). For information, call 872-5107. Nonmembers are invited to attend.

BELFAST STAMP CLUB

The club meets on the third Thursday of the month at noon. The location changes each month. For information, call Dick Gerry, president, at 866-3583.

YORK COUNTY STAMP CLUB

The club meets on the second and fourth Thursday of each month beginning at 7:30 p.m. at the Sanford Masonic Hall, Elm Street, Sanford. Usual events include raffle, auction, presentations, refreshments, and an occasional visit from a stamp dealer. Dues are \$5 per year. For information, contact Secretary Tracey Levasseur, 329 Ross Corner Rd., Shapleigh, ME 04076.

UNION RIVER STAMP CLUB

The Union River Stamp Club meets the first Thursday of each month from April through November at the Ellsworth City Hall, beginning at 6:30 p.m. For information, contact Eric Beal at <Eric_Beal@umit.maine.edu>.

MAIPEX '02 Stamp Show

The Waterville Stamp Club will present MAIPEX '02 Stamp Show & Auction on October 19, 2002 at the Kennebec Valley Technical College in Fairfield. The event will be from 9 a.m. to 4 p.m. in Carter Hall.

Those visiting will find stamps and stamp supplies, a U.S. Postal Service desk, a giant table auction, post cards and covers and refreshments. The table auction will close at 12:30 p.m., and all auction lots receiving more than five bids will go to oral auction, which will begin promptly at 1 p.m.

To reach the show from Interstate 95, take Exit 35 and travel 200 yards east on Route 139. ☒

It's important that philatelists learn about post cards

By **Richard N. Carr**
Of Biddeford

I am a relatively new member of the Maine Philatelic Society, and my primary interest is collecting post cards, just as philatelists collect stamps. I would like to introduce you to post card collecting by offering a short history of the post card in the United States.

There are several eras for the post card. Here is a brief synopsis for each era:

• PIONEER ERA (1893-1901) •

Although there were earlier scattered issues, most pioneer cards in today's collections begin with those cards placed on sale at the Columbian Exposition in Chicago on May 1, 1893. These were illustrations on government printed postal cards and on privately printed souvenir cards. The government postal cards had the imprinted one-cent stamp while the souvenir cards required a two-cent adhesive postage stamp to be applied to it. Writing was not permitted on the address side of the card.

• PRIVATE MAILING CARD ERA (1898-1901) •

On May 19, 1898, private printers were granted permission, by an act of Congress, to print and sell cards that bore

the inscription "Private Mailing Card." Today, we call these cards "PMCs." Postage required was now a one-cent adhesive stamp. A dozen or more American printers began to take post cards seriously. Writing was still not permitted on the address side; however, many publishers often left a wide border on the side or bottom of the view side so a short message could be added.

• POST CARD ERA (1901-1907) •

The use of the word "POST CARD" was granted by the government to private printers on December 4, 1901. In this era, private citizens began to take black and white photographs and have them printed on paper with post card backs. Writing was still not permitted on the address side.

• UNDIVIDED BACK ERA (1893-1907) •

The above three eras also can be grouped into the general heading of "Undivided Back."

• DIVIDED BACK ERA (1907-1914) •

Post cards with a divided back, that is, with a printed vertical line down the middle, were permitted starting March 1, 1907. The address to be written on the right side and written messages to be on the left. Many millions of cards were pub-

Continued on page 5

Are YOU on the Internet?

Here is a list of MPS members with e-mail

Joe Antizzo

Joeantizzo@aol.com

Louis C. Bakuka

grampsusn@aol.com

Robert (Bob) Barker

rebarker@rebarker.com

George Barner

gbarner@adelphia.net

Al Barth

cfercat@megalink.net

Chuck Brand

shakerdom@hotmail.com

Tom Cieslinski

singcies@mint.net

Gary Clark

gclark1@tampabay.rr.com

Nancy B. Clark

nbc@Cape.com

David Costain

dcostain@midmaine.com

Dr. John Engle

jengle@gwi.net

Jim Forte

jimforte@postalhistory.com

Dan Goodwin

dgoodwin@psouth.net

Robert Gross

bobgrossrc@adelphia.net

Terence Hines

TerenceHines@aol.com

Kelvin Kindahl

kanda@javanet.com

Dick Laetsch

precancel@aol.com

Steve LaForge

stephenlaforge@netscape.net

Rick Lancaster

modcover@gwi.net

James Larsen

larsenj@c2i2.com

Philippe C. Lebel

PCLEBEL@hotmail.com

Rev. Robert Leon

aslanleon@altavista.com

Max Lynds

Max@pwless.net

Paul R. Maynard

Maynard25@Charter.net

Vince McDermott

jvmcdermott@juno.com

Andrew J. Moran

amoran66@yahoo.com

Ed Muzzy

edmuzzy17@aol.com

Robert W. Olmsted

cal@americanletters.org

Everett L. Parker

eparker@midmaine.com

Phil Peverada

peverada@midcoast.com

Thurlow Pitts

antares23@hypernet.com

Jack Pooler

pooler@attbi.com

Steven Pottle

sppride@aol.com

Gil Roderick

destamps@acadia.net

William W. Sammis

cds13@cornell.edu

John E. Sawhill Jr.

bsawhill@gwi.net

Barry Serpell

serpellmaine@aol.com

Roland Simard

manacorp@aol.com

Henry Stevens

hstevens@stamps.win.net

Henry G. Turnbull

AZNPTHGT1@webtv.net

Edwin F. Whitney

edfwhitney@yahoo.com

Richard Williams

richwilljr@adelphia.net

Kennedy L. Wilson

k-mew@midcoast.com

Comprehensive Maine DOANES listing continues

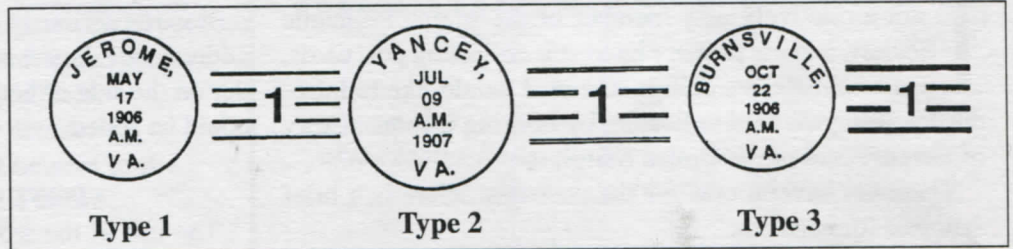
Starting in 1903 and concluding in 1906, the Post Office Department distributed a unique type of rubber handstamp to improve the impression quality of postmarks and cancels. Postal historians now refer to these handstamps as "Doane Cancels" in honor of Edith Doane, who led research into their background and distribution.

Doane cancels are recognizable by a number in the cancel bars. Recent research by Richard Helbock, editor of *La Posta*, revealed a near perfect correlation between the dollar volume of the postmaster's compensation for the year previous to the issue of a Doane cancel and the number appearing in the cancel bars. For example, if a postmaster's compensation was less than \$100, the new cancel contained the numeral "1." When the compensation was between \$100 and \$200, the cancel contained the numeral "2" and so on.

Doanes were issued in different formats that are identified as Types 1, 2 and 3. The numbering of the types is based on their chronological order of

distribution. For example, the five bar Type 1 cancel was issued in 1903 (up to October), the hollow, four bar Type 2 between October 1903 and June 1905, and the solid, four bar from June 1905 to the mid- 1906.

Samples of each type are shown on this page. This is only a brief over-



view of the Doane system. Following is a listing of all known Maine Doanes, provided by Secretary Bruce Hazelton. Corrections should be sent to Mr. Hazelton at P.O. Box 67A, Cumberland Center, ME 04021.

MAINE DOANES

Post Office	Type	No.	Earliest	Latest	Post Office	Type	No.	Earliest	Latest
Trevett	2	3	18 Aug 1905	10 Dec 1909	W. Gray	3	2	15 Oct 1906	27 Sept 1907
Troy	2	2	5 June 1905	19 July 1909	West Mills	1	2	2 Jan 1908	25 Dec 1911
Turner Center	2	3	4 May 1904	9 July 1913	West Mills	2	3	13 Feb 1904	20 Feb 1912
Union	2	1	10 May 1910		W. Minot	2	3	13 Feb 1904	8 June 1907
Unionville	2	1	8 April 1912		W. Oldtown	3	1	1 March 1906	21 July 1913
Upper Dam	3	3	15 June 1906	17 Nov 1922	W. Paris	3	3	30 Sept 1908	
Upper Frenchville	2		13 July 1904	25 March 1908	W. Penobscot	2	1	6 July 1906	8 Sept 1908
Upper Gloucester	2	3	31 Dec 1903	25 Aug 1908	W. Peru	2	3	21 June 1904	14 Aug 1909
Upton	3	3	15 Aug 1905	3 Sept 1907	W. Poland	2	3	19 Feb 1904	14 April 1909
Vienna	2	2	10 March 1904	20 Feb 1909	W. Poland	3	3	22 Feb 1908	6 April 1909
Waldo	2	1	12 Sept 1904	8 Jan 1906	W. Rockport	3	2	16 April 1906	19 Dec 1909
Wallagrass	2	2	8 Dec 1904	25 Feb 1910	W. Scarboro	2	3	8 Aug 1905	30 Dec 1909
Walpole	3	2	12 Nov 1906	4 March 1910	W. Searsmont	2	1	7 June 1905	15 Aug 1913
Waltham	2	2	22 Feb 1905	25 Dec 1911	W. Sebois	2	2	9 Aug 1904	4 Dec 1907
Warren	2		30 Dec 1907		W. Southport	2	3	30 March 1905	3 Feb 1912
Waterford	2	2	11 Dec 1905		W. Sullivan	2	3	4 Jan 1906	8 July '07 21 Feb '23?
Webhannet	3	2	17 Jan 1906	21 July 1916	W. Troy	2	2	13 Feb 1905	6 Dec 1907
Wellington	2	3	26 July 1905	26 June 1913	W. Warren	3	2	20 Jan 1906	16 May 1912
Wells Branch	2	1	29 July 1904	29 Oct 1906	W. Washington	2	1	8 Aug 1906	5 Oct 1907
Wesley	2	2	Jan 1906	19 June 1907	Whitefield	3	2	26 Jan 1906	28 March 1907
W. Appleton	2	1	14 June 1904	28 Dec 1911	Whiterock	2	3	17 Sept 1904	24 Dec 1908
W. Bethel	2	4	15 Oct 1905	21 June 1917	Whiting	2	2	3 May 1904	23 Dec 1910
W. Boothbay Harbor	3	2	5 June 1907	26 Nov 1913	Whitneyville	2	3	4 Dec 1905	7 June 1913
W. Brooklin	3	1	14 Sept 1907	4 Aug 1927	Wilson's Mills	2	2	30 Sept 1905	5 Dec 1910
W. Brooksville	3	3	7 March 1907	20 Dec 1912	Wilton	3	12	1 Jan 1906	6 April 1912
W. Eden	2		30 May 1907		Windsorville	2	1	26 March 1906	13 Jan 1912
W. Ellsworth	2		16 Feb 1904	27 June 1904	Winnegange	3	3	24 Aug 1906	4 Jan 1912
W. Enfield	2	6	Not seen		Winslow's Mills	1	3	26 Feb 1904	30 Sept 1909
Westfield	2	1	7 Oct 1905	4 Feb 1910	Winterville	3	5	17 June 1907	16 Aug 1910
W. Gouldsboro	3	3	17 Oct 1906	27 Nov 1912	Woodland	3	1	14 Feb 1906	23 Dec 1911
					Woodville	2	1	22 Feb 1905	2 Oct 1909
					Wytovitlock	3		10 Aug 1908	
					York Corner	3	5	12 March 1907	17 April 1912

Post cards

Continued from page 3

lished in this period. Up to this point, most cards were printed in Germany, where printers were far ahead of the U.S. in the lithographic process. With the advent of World War I, the supply of post cards had to come from England and the United States.

• **WHITE BORDER ERA (1915-1930)** •

Most of our post cards were printed in the USA during this period. To save ink, a border was left around the view, and thus we classify them as "White Border" cards. High costs of labor, inexperience and public taste caused production of poor quality cards. High competition in a narrowing market caused many publishers to go out of business.

Continued on page 8

MAINE SHORT BAR CANCELS

TYPE 1: Single circle datestamp approximately 1+ inches in diameter. Town name and state identification (ME) at top of circle. Five digit Zip Code at bottom of circle. Month, day, year across center of circle. Four killer bars, shortest dimension approximately 5/16 inch, longest dimension approximately 7/16 inch.

TYPE 2: Double circle datestamp. Town and state identification (ME) at top. Month, day, year across center of inner circle. Killer length same as Type 1 cancel.

A: "ME" at bottom followed by five digit Zip Code.

B: "AM" or "PM" between date and bottom line of information.

C: Killer bars slightly longer than normal.

D: Five digit Zip Code at top.

E: Nine digit Zip Code at bottom.

F: "AM" or "PM" at bottom followed by five digit Zip Code.

G: USPS at bottom.

H: Entire cancel oversize.

J: Nine digit Zip Code at top.

MAINE SHORT BAR CANCELS AND TYPES

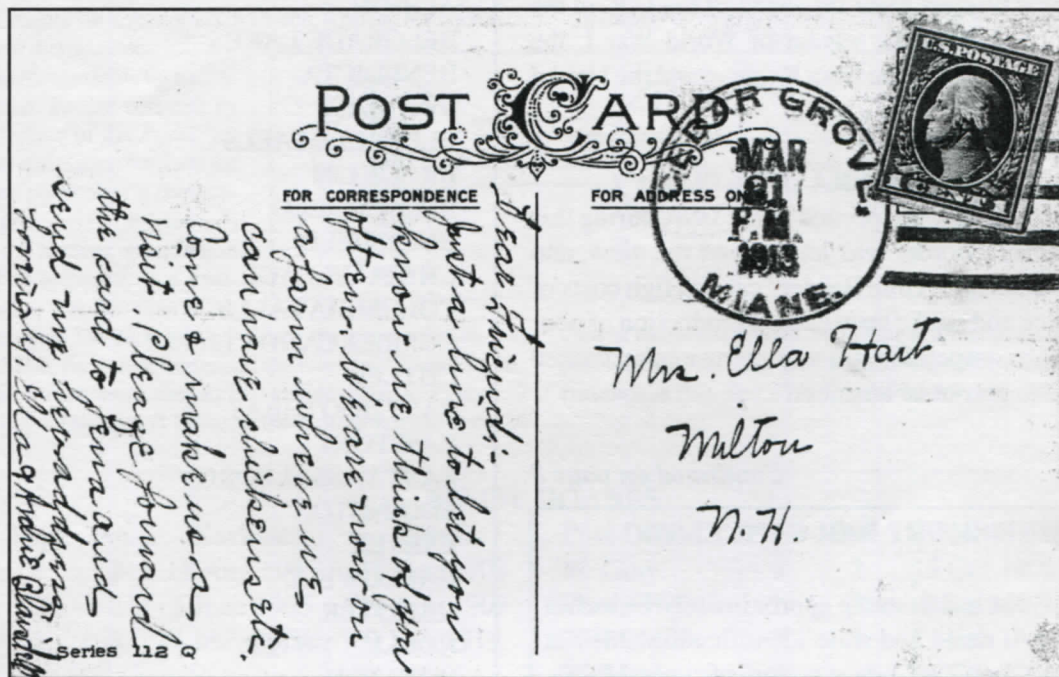
14 AUGUST 2002

(see Goodwin article on page 1)

ADDISON	T-1
ALBION	T-1
BELGRADE LAKES	T-1B
BENEDICTA	T-1
BINGHAM	T-1
BLUE HILL FALLS	T-1C
BROOKLIN	T-1
BROWNFIELD	T-1
BUCKFIELD	T-1H
CHINA VILLAGE	T-1H
COLUMBIA FALLS	T-1B
CUMBERLAND CENTER	T-1A
CUTLER	
EAST BOOTHBAY	T-2GJ
EASTPORT	T-1
EAST VASSALBORO	T-2E
EDDINGTON	T-1F
EXETER	T-1
HALLOWELL	T-1
HANOVER	T-1
HOLLIS CENTER	T-1B
HOULTON	T-1B
HUDSON	T-1EG
KENDUSKEAG	T-1BG
KENNEBUNK	T-1BE
KENTS HILL	T-1
LIMESTONE	T-1DG
LIMINGTON	T-1B
LIVERMORE	T-1B
MACHIAS	
MILBRIDGE	T-1
MILLINOCKET	T-1
MONSON	T-1BDG, T-1E
MOUNT DESERT	T-1B
NEW HARBOR	T-1B
NORTH JAY	T-1
NORTH WATERBORO	T-1A
NORWAY	T-1B
OGUNQUIT	T-1B
ORIENT	T-1
OXFORD	T-1
PHILLIPS	T-1B
PORTER	T-1
ROUND POND	T-1B
STEEP FALLS	T-1
STOCKHOLM	T-1B
STRONG	T-1
VAN BUREN	T-1
WATERBORO	T-1B
WEST NEWFIELD	T-1A
WINTER HARBOR	T-1

A postal history feature
by Rob Washburn
of Skowhegan

Maine Cover of the Quarter

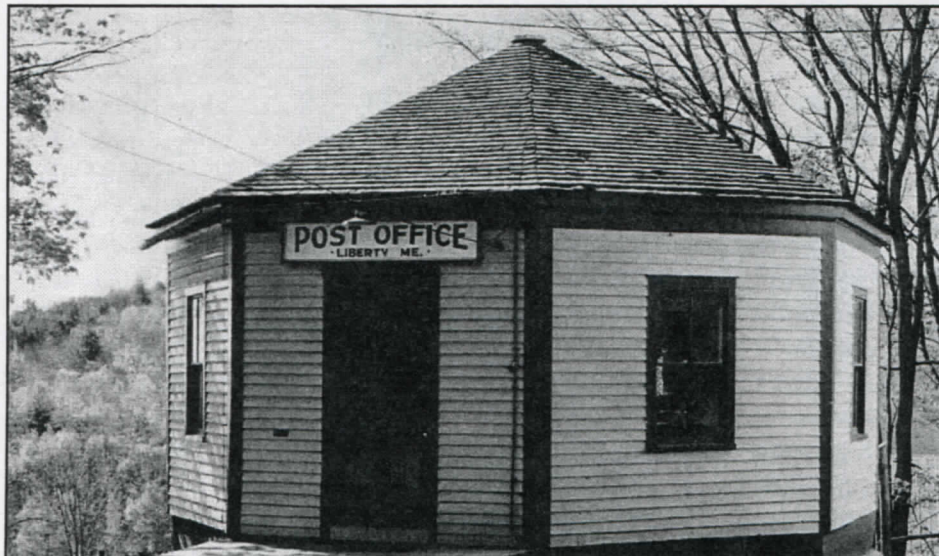


Here is another misspelling of a Maine cancel, this time from Cedar Grove, MIANE.

(If you have a candidate for Maine Cover of the Quarter, please send a photocopy of your cover against a black background to Rob Washburn, P.O. Box 840, Skowhegan, ME 04976).

Post Offices of Maine

A regular feature



This photo shows the post office building in Liberty, Maine (Waldo County) at an unknown date. Ralph W. Smith of Leesburg, Florida, (formerly of Dryden) forwarded the card, noting that it unfortunately was not used and hence he could not determine the date, and that it would not fit into his wife's Maine cancellation collection! The post office was opened on April 2, 1833 and is still operating. Do YOU have a photo of an old post office? Send it to the editor with as much information as you know about it.

Bruce Hazelton
Secretary

Secretary's Report

NEW MEMBERS

James A. Michielli, 284 Mud Creek Rd., Lamoine, ME 04605

ADDRESS CHANGES

Dr. George W. Bostwick, 155 Moodys Island Rd., Nobleboro, ME 04555-9512

Fred W. Rines, P.O. Box 6, South Gardiner, ME 04359-0006

Benjamin Zeichick, 21922 Buxton Ave., Port Charlotte, FL 33952

Hartley J. LaDuke, P.O. Box 104, Norway, ME 04268-0104

Henry B. Stevens, 6400 Taylor Rd., Lot 108, Punta Gorda, FL 33950-9316

Leonard E. Belanger, 25 Second St., Apt. 134, Hallowell, ME 04347-1702

NECROLOGY Otis Graham

THE CLASSIFIEDS

Classified advertisements are free to members. You may use this space to buy and sell, trade or swap. When sending an advertisement, please mark it for the Classifieds and indicate how many issues you wish it to appear. All ads will appear twice and be removed unless otherwise indicated.

WANTED

Wanted: modern (since 1970) U.S. covers. I am especially looking for junk mail transportation coil PNC covers, Express mail, postage dues, insured mail, Certified mail, auxiliary markings. Rob Washburn, P.O. Box 840, Skowhegan, ME 04976-0840. (4-02)

Wanted: Maine hunting and fishing stamps on license. Will pay a minimum of \$20 each for every license I need. Also want Maine (and other New England states) Old Home Week seals. Terence Hines, P.O. Box 629, Chappaqua, NY 10514-0629. (4-03)

Information needed to further research on Maine NARROW GAUGE RPOs. Need RPO, month, day, year, train no. ME 4 BAR COLORED cancels, need P.O. name, month, day, year, time, color. Will respond to all information received. Bruce L. Corey, 108 Marilyn Ave., Westbrook, ME 04092-4624. (4-02)

Wanted to buy: Maine fancy cancels on cover or postal cards, stampless to 1920 only. Let me know what you have. Gil Roderick, 52 Fern St., Bangor, ME 04401. (4-02)

Collector is looking for covers from Houlton Air Force Base Station. If you have same, please contact me. Telephone: 538-9788 (home) or 532-2291 (work). My e-mail is max@ainop.com Max Leigh Lynds, P.O. Box 761, Houlton, ME 04730-0761. (4-02)

Wanted: perfins used in Maine, on cover or off (with good town cancels). Special interest in AJS (Auburn) and RB (Bangor) -- users not yet identified. Will buy or trade. Vince McDermott, 53 Willow Grove Rd., Brunswick, ME 04011-2969. (4-02)

We urgently need quantities of used Japanese stamps from the period of 1876 (Old Koban Series) through 1955. Dealer stocks, accumulations, bundle material from this period needed for our specialist customers. Will buy anything and everything (used only) at fair prices or will select only what we most urgently need at near to full Scott retail. Prompt payment always. Forty-five years in the trade! John B. Head, P.O. Box 7, Bethel, ME 04217. (4-02)

Wanted: Maine Express Covers (and others): with labels, hand-

stamps, manuscript markings or cornercards. Express Company labels and stamps (such as for newspapers, parcels or free franking) off cover also sought. William W. Sammis (Bill), 436 Thomas Rd., Ithaca, NY 14850-9653. (4-02)

Wanted: Early USN postcards of battleships with ship cancels before 1920 (called classics): BB2 USS *Massachusetts*, BB4 USS *Iowa*, BB5 USS *Kearsage*, BB7 USS *Illinois*, BB8 USS *Alabama*, BB9 USS *Wisconsin*. I have other BB covers and postcards for trade. Also interested in topicals, especially flowers on stamps, and Antarctic stamps. Louis C. Bakula, P.O. Box 150, West Poland, ME 04291-0150. (4-02)

Wanted: Any PPC with Lake Cobbesseeconte (Manchester, Maine as well). Also any PPC with rural railroad scenes as well as RPO covers in the lower price range. Gary Clark, 3607 Landings Way Dr., Apt. 107, Tampa, FL 33624. (4-02)

Wanted: Postal history of Pitcairn Island in the South Pacific, St. Pierre & Miquelon and Newfoundland. Some stamps also needed. Let me know if you have anything to offer. Everett L. Parker, 719 Moosehead Lake Rd., Greenville, ME 04441 (4-02)

FOR SALE

Precancel approvals: town and types 15¢, classics, 1922-26 general, bicents, prexies, perfins available. Buro approvals starting at 10¢ each. Good mixed precancel lots. 2,000-\$35.00; 10,000-\$145.00. Mixed buros, 2,000-\$35.00, 10,000-\$145.00. Dick Laetsch, 108 Ashswamp Road, Scarborough, ME 04074. e-mail: precancel@aol.com; website: www.precanceledstamps.com (4-02)

For sale: DPO, Macy, ME - Doane 1906 on PPC, Rarity 8. First \$75.00 takes it. Carl A. Burnham, RR1, Box 559, Limington, ME 04046. Telephone 637-2871. (4-02)

For sale -- helping friend dispose of father's collection. Sheets, blocks, booklets, assorted postage at face. Airmail, singles, blocks half of catalogue value. Mint postal cards, postal reply cards. Please ask by Scott number. Charles Boudreau, 37 Center St., P.O. Box 498, Machias, ME 04654-0498. Telephone 255-3918. (4-02).

Post cards

Continued from page 5

• LINEN ERA (1930-1944) •

New printing processes allowed printing on post cards with a high rag content that caused a "linen-like" finish. These cheap cards allowed the use of gaudy dyes for coloring. The firm of Curt Teich flourished with their line of linen post cards. Many important events in history were recorded on these cards.

• PHOTOCROME ERA (1945 to present) •

The "chrome" post cards started to dominate the scene soon after they were launched by the Union Oil Company in their Western service stations in 1939. Mike Roberts pioneered with his "WESCO" cards soon after World War II. Three dimensional post cards also appeared during this era.

(EDITOR'S NOTE: This was reprinted from the magazine Postcard Collector, January 1998.)

Call for articles!

The cupboard is getting bare and we need articles for the winter issue. With the long winter nights coming, this is a good time to do some writing to keep your editor happy!

YORKPEX show set for November 2 at Kittery

YORKPEX,
a stamp show by the
YORK COUNTY STAMP CLUB
November 2, 2002
9:00 a.m. to 4:00 p.m.
Day's Inn Conference Center
Gorges Road, Route 1 Bypass
Kittery, Maine

10 Dealers
Exhibits
Kids' Table
Lunch Counter
Please come and help support this show
with your attendance!

Maine Philatelic Society
719 Moosehead Lake Rd.
Greenville, ME 04441-9727



IM
If (6
name
tim

show your dues!