



The Maine Philatelist

Vol. 35, No. 1

July 2002

Whole No. 128

TMP wins Gold medal in national competition

The Maine Philatelic Society captured a Gold medal in national competition recently for *The Maine Philatelist*. It was the first time the journal had been entered in literature competition under the current editorship.

The American Philatelic Society's annual Chapter Activities Committee's 2001 Newsletter Competition saw entries from across the country and Canada. Only five Gold level medals were awarded in the competition. *The Maine Philatelist* was entered in the Federation category for multi-page journals produced by philatelic societies with over 100 members.

The Maine Philatelist will be on display at the APS STAMPSHOW 2002 in Atlantic City, New Jersey in August.

CAC Chairman Tom Fortunato will have an APS Awards Certificate Presentation ceremony for newsletter competition editors at the CAC meeting on August 17.

Your editor received a critique from three nationally recognized philatelic literature judges following the competition. Dr. Ben Ramkissoo noted the journal is "a model of an outstanding society newsletter, with a good balance of philatelic material and member/society news and information." Tony Brooks noted under the category for format and readability: "... wish my bulletin looked as good!" Judge Barth Healey said, "Lifted out of the ordinary by articles on local philatelic research and new issues." ☐

Plan now to attend SPUDPEX in Houlton on Oct. 12

The Maine Philatelic Society will sponsor SPUDPEX 2002 at the Houlton Gentle Memorial Building (Houlton Recreation Center) on Main Street in Houlton on Saturday, October 12. (Entrance to the show is actually off Pleasant Street by the tennis courts.)

The show will be from 9 a.m. to 4 p.m. There will be dealers with stamps, post cards and supplies. There will be a silent auction ending at 12:30 p.m. with all items with more than five bids going to oral auction at 1 p.m.

There will be exhibits of local postal history, and a special stamp is being planned for the event. Admission will be free. For information, contact Max Lynds of our Board of Directors. Max is the driving force behind this show, now in its third year. He can be reached on e-mail at max@pwless.net, or by calling (207) 532-2291, extension 242.

Max and member Paul Romanelli of Houlton represented the Maine Philatelic Society at an April meeting in New Brunswick of the Federation and District Stamp Club. As a result, columnist Michael O. Nowlan mentioned TMP in a recent issue of *Canadian Stamp News*. In his article, Nowlan said the meeting was "a wonderful exchange of ideas and stamp conversation." Lynds and Romanelli are also working on starting a club in Aroostook County. Nowlan also mentioned TMP,

noting the journal "is a first-class newsletter that has news and information on several clubs in Maine as well as local shows. There are also some excellent short pieces on early Maine postal and post office history." ☐

A rose is a rose is a rose...

By Dan Goodwin

Of North Berwick

I sent four envelopes to the postmaster at Saint George for Last Day Cancells and First Day Cancells for Wileys Corner. They were returned with a note from the postmaster at Tenants Harbor (unserved, of course). This is what she wrote:

"St. George is a 'suspended' office, or an office which is not officially closed. Presently there is delivery to St. George 04857, but no post office. It is delivered out of Tenants Harbor 04860 office. The name change to Wileys Corner is a change only on paper so as to free up the name St. George. Eventually all mail delivered to the St. George/Tenants Harbor area will be under the 04860 Zip Code, with Tenants Harbor as the official name and St. George as the secondary name. Of course, until all is final, anything can change!" Are you confused yet? I am! ☐

The Maine Philatelist is published quarterly by the
Maine Philatelic Society, Inc.

Website: <http://www.ainop.com/users/max/mps.htm>

The purpose of the Society, a non-profit Maine corporation, is to promote philately in the Pine Tree State. Membership is open to anyone. Membership applications are available from the Secretary, listed below.

Dues are \$5.00 per fiscal year (ending in June).

Life Membership is also available.

Contact the Secretary for details.

**Articles for publication should be sent to the
President/Editor at address below.**

OFFICERS

President

Dr. Everett L. Parker (2003)

719 Moosehead Lake Rd.

Greenville, ME 04441-9727

(207) 695-3163 (Voice and Fax)

e-mail - eparker@midmaine.com

Vice President

Mr. Jim Foote III (2002)

P.O. Box 16

Manchester, ME 04351-0016

Secretary

Mr. Bruce Hazelton (2003)

P.O. Box 67A

Cumberland Center, ME 04021

Treasurer

Mr. Rick Stambaugh (2002)

16 Elmwood Ct.

N. Berwick, ME 03906

e-mail - rickstambaugh@cybertours.com

BOARD OF DIRECTORS

Richard Warren of Cushing (dickw@midcoast.com) (2002)

Ray Gagnon of Lewiston (2002)

Max L. Lynds of Houlton (Max@pwless.net) (2002)

John E. Engle, M.D. of Waterville (jengle@mint.net) (2002)

PUBLISHING SCHEDULE

The Maine Philatelist is distributed to members in January, April, July and October of each year. Below is a list of deadlines for each issue and the anticipated mailing date. While deadline for copy (articles) is firm, the anticipated mailing date is just that -- a "best guess" of mailing.

ISSUE COVER DATE	DEADLINE FOR COPY	JOURNAL TO PRINTER	ANTICIPATED MAILING DATE
January	Dec. 15	Dec. 30	Jan. 15
April	March 15	March 30	April 15
July	June 15	June 30	July 15
October	Sept. 15	Sept. 30	Oct. 15

Maine stamp club meetings



*Stamp clubs in Maine are invited to become members
of the Maine Philatelic Society. We will publish, free of
charge, meeting information and locations.*

WATERTVILLE STAMP CLUB

The club meets on the first and third Friday from September to May and on the third Friday only during June, July and August. Meetings are from 6:30 to 9 p.m. at the Kennebec Valley Technical College (KVTC) on Western Avenue in Fairfield (Exit 35 of Interstate 95). For information, call 872-5107. Nonmembers are invited to attend.

BELFAST STAMP CLUB

The club meets on the third Thursday of the month at noon. The location changes each month. For information, call Dick Gerry, president, at 866-3583.

YORK COUNTY STAMP CLUB

The club meets on the second and fourth Thursday of each month beginning at 7:30 p.m. at the Sanford Masonic Hall, Elm Street, Sanford. Usual events include raffle, auction, presentations, refreshments, and an occasional visit from a stamp dealer. Dues are \$5 per year. For information, contact Secretary Tracey Levasseur, 329 Ross Corner Rd., Shapleigh, ME 04076.

UNION RIVER STAMP CLUB

The Union River Stamp Club meets the first Thursday of each month from April through November at the Ellsworth Library, beginning at 6:30 p.m. For information, contact Eric Beal at Eric_Beal@umit.maine.edu.

URIPEX VI

August 3, 2002

9 a.m. - 4 p.m.

at the Elks Lodge

**317 High Street (Route 3) in
Ellsworth.**

**Auction, exhibits, dealers, sale of
cacheted covers, kids' corner and
raffle. Ample parking, free admission.**

Little information on East Bethel Post Office?

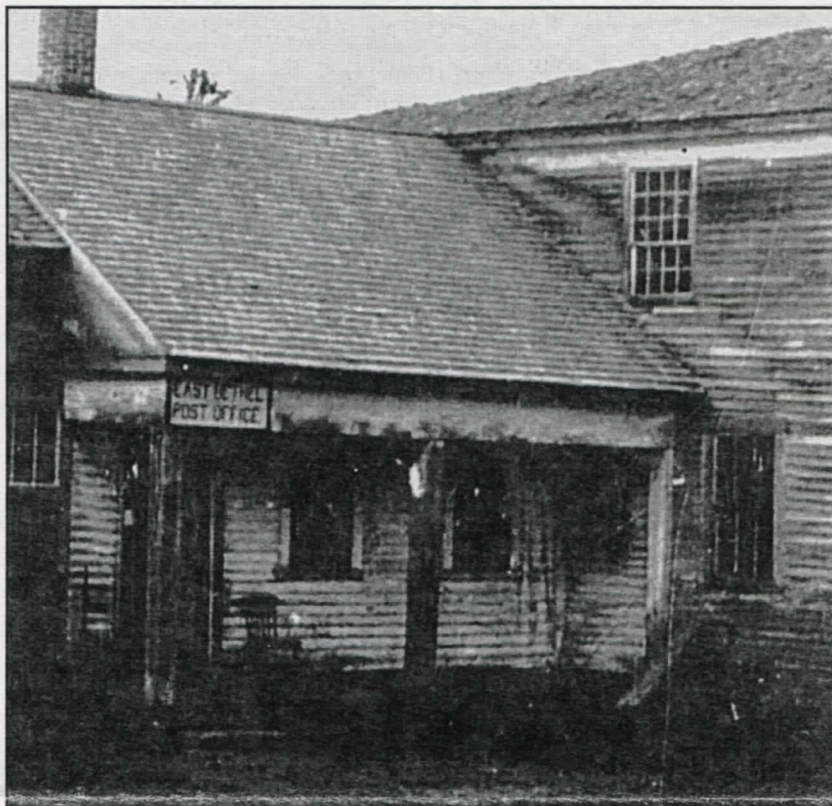
By Nancy H. Mercer
Of Bethel

I don't know when the accompanying photograph of the East Bethel Post Office was taken, but I was born and raised in this house. The only thing that has changed is the window arrangement. The windows are now two-over-two, and the window to the left of the sign isn't there now. The changes were made before I came along.

There is little available information about the East Bethel Post Office. According to *The Post Offices of Maine: A Rarity Guide*,¹ the East Bethel Post Office was first opened on April 28, 1824, and closed on December 28, 1858. It was reopened on October 28, 1862 (almost four years after the first post office closed), and then closed on October 13, 1865 (open only three years).

The post office reopened on September 24, 1884 and remained open less than two years, closing on January 21, 1886. The final East Bethel Post Office opened on July 8, 1886, and closed on December 14, 1907.

In his book *Maine Postal History and Postmarks*,
Continued on page 5



Enlargement of Figure 1 (see next page) showing the post office sign at the left.

Are YOU on the Internet?

Here is a list of MPS members with e-mail

Joe Antizzo
Joeantizzo@aol.com
Louis C. Bakuka
grampsusn@aol.com
George Barner
gbarner@adelphia.net
Al Barth
cfercat@megalink.net
Chuck Brand
shakerdom@hotmail.com
Tom Cieslinski
singcies@mint.net
Gary Clark
gclark1@tampabay.rr.com
Nancy B. Clark
nbc@Cape.com
David Costain
dcostain@midmaine.com
Dr. John Engle
jengle@gwi.net
Jim Forte
jimforte@postalhistory.com

Dan Goodwin
dgoodwin@psouth.net
Robert Gross
bobgrossrcr@adelphia.net
Terence Hines
TerenceHines@aol.com
Kelvin Kindahl
kanda@javanet.com
Dick Laetsch
precancel@aol.com
Steve LaForge
stephenlaforge@netscape.net
Rick Lancaster
modcover@gwi.net
James Larsen
larsenj@c2i2.com
Philippe C. Lebel
PCLEBEL@hotmail.com
Rev. Robert Leon
aslanleon@altavista.com
Max Lynds
Max@pwless.net

Paul R. Maynard
Maynard25@Charter.net
Vince McDermott
jvmcdermott@juno.com
Andrew J. Moran
amoran66@yahoo.com
Ed Muzzy
edmuzzy17@aol.com
Robert W. Olmsted
cal@americanletters.org
Everett L. Parker
eparker@midmaine.com
Phil Peverada
peverada@midcoast.com
Thurlow Pitts
antares23@hypernet.com
Jack Pooler
pooler@attbi.com
Steven Pottle
sppride@aol.com
Gil Roderick
destamps@acadia.net

William W. Sammis
cds13@cornell.edu
John E. Sawhill Jr.
bsawhill@gwi.net
Barry Serpell
serpellmaine@aol.com
Roland Simard
manacorp@aol.com
Henry Stevens
hstevens@stamps.win.net
Henry G. Turnbull
AZNPHTGT1@webtv.net
Edwin F. Whitney
edfwhitney@yahoo.com
Richard Williams
richwill@qsilver.net
Kennedy L. Wilson
k-mew@midcoast.com

Comprehensive Maine DOANES listing continues

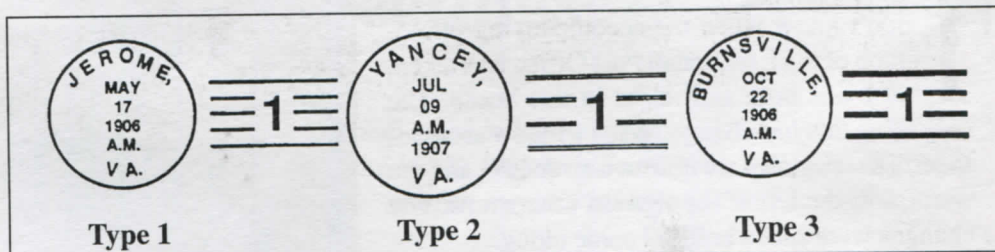
Starting in 1903 and concluding in 1906, the Post Office Department distributed a unique type of rubber handstamp to improve the impression quality of postmarks and cancels. Postal historians now refer to these handstamps as "Doane Cancels" in honor of Edith Doane, who led research into their background and distribution.

Doane cancels are recognizable by a number in the cancel bars. Recent research by Richard Helbock, editor of *La Posta*, revealed a near perfect correlation between the dollar volume of the postmaster's compensation for the year previous to the issue of a Doane cancel and the number appearing in the cancel bars. For example, if a postmaster's compensation was less than \$100, the new cancel contained the numeral "1." When the compensation was between \$100 and \$200, the cancel contained the numeral "2" and so on.

Doanes were issued in different formats that are identified as Types 1, 2 and 3. The numbering of the types is based on their chronological order of

distribution. For example, the five bar Type 1 cancel was issued in 1903 (up to October), the hollow, four bar Type 2 between October 1903 and June 1905, and the solid, four bar from June 1905 to the mid- 1906.

Samples of each type are shown on this page. This is only a brief over-



view of the Doane system. Following is a listing of all known Maine Doanes, provided by Secretary Bruce Hazelton. Corrections should be sent to Mr. Hazelton at P.O. Box 67A, Cumberland Center, ME 04021.

MAINE DOANES

Post Office	Type	No.	Earliest	Latest	Post Office	Type	No.	Earliest	Latest
South Beddington	3	1	8 Sept 1906	10 Dec 1912	Stanley	2	1	29 Aug 1904	1 Feb 1905
South Bluehill	3	2	23 Oct 1906	23 Dec 1912	Starboard	2	1	17 July 1905	21 July 1906
South Bridgton	3	3	18 June 1906	27 Feb 1913	Stark	2	3	23 Oct 1905	5 March 1912
South Bristol	2	5	7 July 1905	22 Aug 1911	Steuben	3	4	25 July 1906	23 Dec 1915
South Carthage	3	1	9 Aug 1907	9 Sept 1907	Stickney Comer	2	2	29 Jan 1904	5 Dec 1911
S. Chesterville	2	1	16 June 1904	23 Dec 1911	Stow	2	2	17 Jan 1905	22 July 1909
South Cushing	2	2	16 Jan 1905	4 April 1913	Stratton	2	4	11 April 1905	24 Dec 1909
South Dresden	2	1	20 Sept 1904	15 Dec 1906	Sugar Island	3	1	3 Oct 1906	14 June 1913
South Freeport	2	3	11 July 1905	22 April 1910	Sullivan	2	4	20 Dec 1905	6 Sept 1911
S. Gouldsboro	2	2	10 May 1905	29 Oct 1912	Sumner	2	2	17 Jan 1907	15 Aug 1912
South Hancock	2	1	12 Dec 1904	7 April 1906	Sunset	3	3	18 May 1906	24 Aug 1913
South Hollis	3	1	3 Dec 1906	2 Feb 1909	Sunshine	2	1	22 July 1904	14 Dec 1909
South Lagrange	3	2	18 May 1906	19 Dec 1910	Surry	2	4	20 Oct 1904	25 Dec 1906
South Limington	2	1	17 Sept 1904	31 Dec 1909 (not Dec 31)	Swans Island	3	3	13 June 1906	15 May 1911
South Limington	2	2	8 June 1906	10 April 1909	Swanville	3	2	'06 18 Mar 1907	1 March 1913
South Naples	3	1	12 Aug 1907	29 Aug 1911	Temple	2	3	28 March 1904	2 Jan 1912
S. Orrington	2	4	29 Aug 1905	9 July 1912	Tenants Harbor	2	5	14 Feb 1905	28 Nov 1907
Southport	1	1	6 Aug 1903	2 Sept 1907	The Forks	2	3	8 June 1904	20 Sept 1911
S. Robbinston	2	2	27 Aug 1907	23 Dec 1908	Topsfield	3	2	5 March 1908	10 Aug 1911
S. Springfield	3	2	29 March 1907	18 June 1908	Trefethen	2	1	8 Aug 1904	26 Aug 1908
South Standish	3	1	15 March 1907	13 June 1911	Tremont	2	3	27 Sept 1905	24 March
South Surry	2	1	20 Sept 1905	22 May 1911	Trevett	2	3	18 Aug 1905	
S. Thomaston	2	3	24 Sept 1904	7 Sept 1912	Troy	2	2	5 June 1905	
South Turner	2	2	28 Dec 1904	28 Dec 1908	Turner Center	2	3	4 May 1904	
South Warren	3	1	2 April 1910	18 July 1917	Union	2	1	10 May 1910	
South Windham	3		14 Aug 1911		Unionville	2	1	8 April 1912	
South Windsor	2	1	17 April 1905	11 Sept 1905	Upper Dam	3	3	15 June 1906	
South Windsor	3	1	15 Aug 1906		Upper Frenchville	2		13 July 1904	
Sprague	2	1	7 Oct 1905		Upper Gloucester	2	3	31 Dec 1903	
Springfield	2	4	29 Dec 1904	27 Aug 1909	Upton	3	3	15 Aug 1905	
Square Lake	3	1	6 June 1907	15 May 1909					
Squirrel Island	2	4	10 July 1905	21 June 1917					
Standish	3	4	20 Feb 1906	23 Dec 1921					

The list continues in the next issue.

Postal route through East Bethel began as early as 1837

Continued from page 3

Sterling T. Dow refers to an advertisement of the Post Office Department in "Portland newspapers" of February 1837, asking for bids for carrying mail for a four-year period beginning on July 1, 1837. Post riders were to be used unless otherwise stated, Dow said.²

Item 77 in the list of routes contained this notation: "From East Bethel to Newry. Once a week."

Figure 1 accompanying this article is a view of the East Bethel Post Office at an undetermined time. Figure 2 is a Regis-

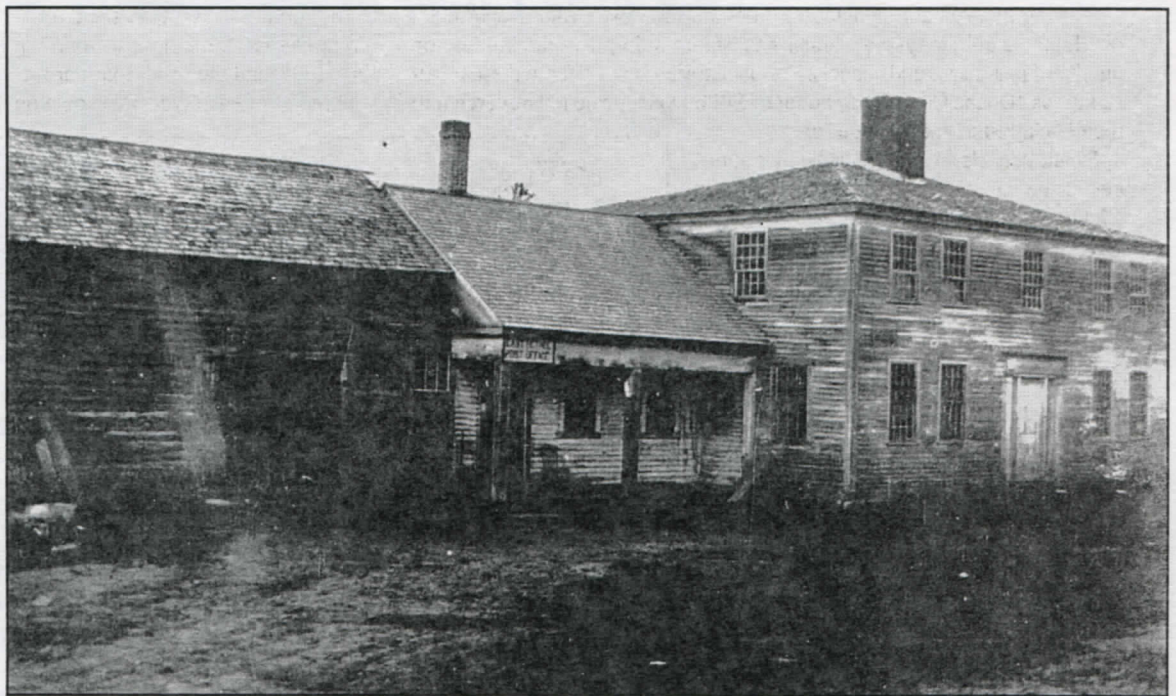


Figure 1: East Bethel Post Office at undetermined date. The author was born and raised in the house. From a photocopy.

\$10 and it appears it is for a five-year subscription to *The New Age*. ☐

The Postmaster making up Registered Letters, &c., for dispatch, will fill up the other side of this Bill, and write the name of his Post Office, County, and State in the blank address on this side. The Postmaster receiving this Bill in Registered Package will at once compare entries with letters, &c., inclosed; make entries on record of registered matter received; stamp postmark below; sign this Bill on other side, noting any errors, and return it to the mailing Post Office without cover. A penalty of \$300 is fixed by law for using this card on other than official business.

Post Office Department.
OFFICIAL BUSINESS.

Post Office at _____

RETURN TO: _____

Postmaster at East Bethel
County of Oxford
State of Maine

2000-0258

Stamp here name of Post Office
SEP 24 7 19 PM
and date of receipt.

Figure 2

tered Letter "bill" dated September 24, 1894 and sent to the "Postmaster at East Bethel, County of Oxford, State of Maine" from Lawrence, Massachusetts.

Figure 3 is the reverse of a post card dated January 29, 1900 and is in the form of a receipt made out to Galen Blake for

FOOTNOTES

¹ Bruce Hazelton, ed. *The Post Offices of Maine: A Rarity Guide* (Cumberland, Maine: The Maine Philatelic Society, 1995), 19.

² Sterling T. Dow, *Maine Postal History and Postmarks* (Portland, Maine: Severn-Wylie-Jewett Co., 1943), 37.

Augusta, Me., Jan. 29, 1900.

Received of Galen Blake

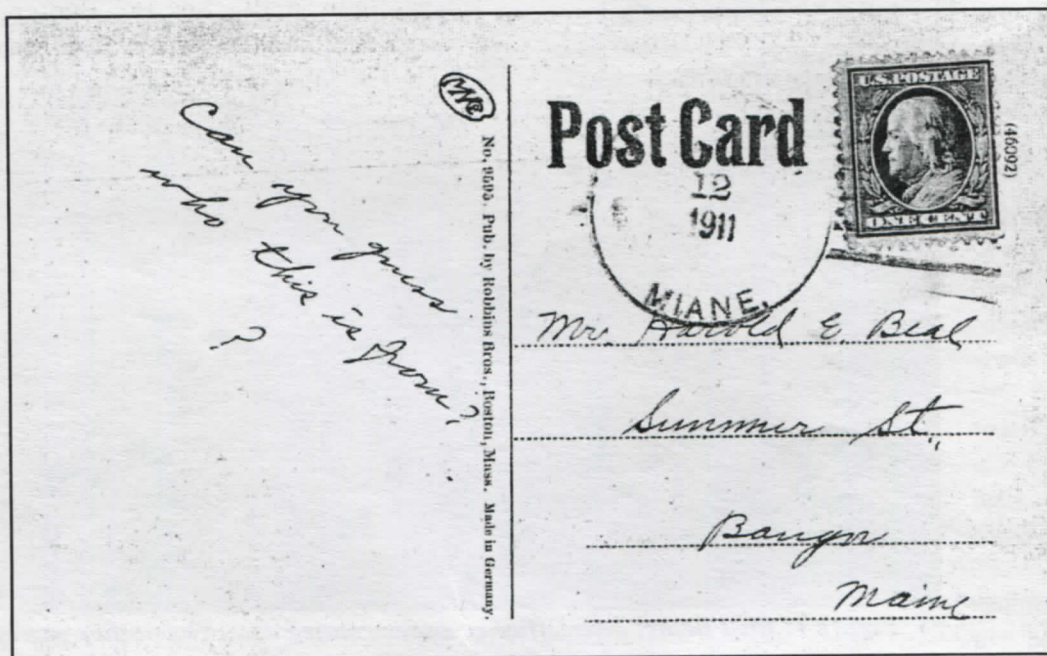
\$10 — in payment for THE NEW AGE

EAST BETHEL
JAN 29 1900
ME.

Figure 3

A postal history feature
by Rob Washburn
of Skowhegan

Maine Cover of the Quarter



The last installment of Maine Cover of the Quarter featured a NORTH SEARSMONT, MIANE misspelled cancel. This time it is a Westfield, MIANE misspelled cancel.

(If you have a candidate for Maine Cover of the Quarter, please send a photocopy of your cover against a black background to Rob Washburn, P.O. Box 840, Skowhegan, ME 04976).

Post Offices of Maine

A regular
feature



This photo shows the Kokadjo General Store and Post Office in the settlement of Kokadjo (north of Greenville). The Kokadjo Post Office was opened on February 1, 1911 and closed in December 1965.

The settlement was formerly known as Roach River. The building is still there and looks essentially the same as in this photograph, although the general store in which the post office was located is also closed.

Do YOU have a photo of an old post office? Send it to the editor with as much information as you know about it.



The Vienna Post office offered this "Bicentennial Station" special postmark earlier this year. Thanks to member Robert C. Harris of Winthrop for a copy of the cancel on post card. The reverse of the card showed the old school-house in Vienna as well as Milton Bradley's birthplace. It is a nice addition to any Maine collection.

Secretary's Report *Bruce Hazelton* Secretary

NEW MEMBERS

Thomas Sullivan, P.O. Box 163, Hudson, ME 04449-0163
Robert F. Skillines, 16 Matthew Dr., Brunswick, ME 04011

ADDRESS CHANGES

Robert W. Bruyere, 7 Second St., Lebanon, ME 04027-4126

NECROLOGY

Joseph Comier

THE CLASSIFIEDS

Classified advertisements are free to members. You may use this space to buy and sell, trade or swap. When sending an advertisement, please mark it for the Classifieds and indicate how many issues you wish it to appear. All ads will appear twice and be removed unless otherwise indicated.

WANTED

Wanted: modern (since 1970) U.S. covers. I am especially looking for junk mail transportation coil PNC covers, Express mail, postage dues, insured mail, Certified mail, auxiliary markings. Rob Washburn, P.O. Box 840, Skowhegan, ME 04976-0840. (4-01)

Wanted: Maine hunting and fishing stamps on license. Will pay a minimum of \$20 each for every license I need. Also want Maine (and other New England states) Old Home Week seals. Terence Hines, P.O. Box 629, Chappaqua, NY 10514-0629. (4-01)

Information needed to further research on Maine NARROW GAUGE RPOs. Need RPO, month, day, year, train no. ME 4 BAR COLORED cancels, need P.O. name, month, day, year, time, color. Will respond to all information received. Bruce L. Corey, 108 Marilyn Ave., Westbrook, ME 04092-4624. (4-01)

Wanted to buy: Maine fancy cancels on cover or postal cards, stampless to 1920 only. Let me know what you have. Gil Roderick, 52 Fern St., Bangor, ME 04401. (4-01)

Collector is looking for covers from Houlton Air Force Base Station. If you have same, please contact me. Telephone: 538-9788 (home) or 532-2291 (work). My e-mail is max@ainop.com Max Leigh Lynds, P.O. Box 761, Houlton, ME 04730-0761. (4-01)

Wanted: perfins used in Maine, on cover or off (with good town cancels). Special interest in AJS (Auburn) and RB (Bangor) -- users not yet identified. Will buy or trade. Vince McDermott, 53 Willow Grove Rd., Brunswick, ME 04011-2969. (4-01)

We urgently need quantities of used Japanese stamps from the period of 1876 (Old Koban Series) through 1955. Dealer stocks, accumulations, bundle material from this period needed for our specialist customers. Will buy anything and everything (used only) at fair prices or will select only what we must urgently need at near to full Scott retail. Prompt payment always. Forty-five years in the trade! John B. Head, P.O. Box 7, Bethel, ME 04217. (4-01)

Wanted: Maine Express Covers (and others): with labels, hand-

stamps, manuscript markings or cornercards. Express Company labels and stamps (such as for newspapers, parcels or free franking) off cover also sought. William W. Sammis (Bill), 436 Thomas Rd., Ithaca, NY 14850-9653. (4-01)

Wanted: Early USN postcards of battleships with ship cancels before 1920 (called classics): BB2 USS *Massachusetts*, BB4 USS *Iowa*, BB5 USS *Kearsage*, BB7 USS *Illinois*, BB8 USS *Alabama*, BB9 USS *Wisconsin*. I have other BB covers and postcards for trade. Also interested in topicals, especially flowers on stamps, and Antarctic stamps. Louis C. Bakula, P.O. Box 150, West Poland, ME 04291-0150. (4-01)

Wanted: Any PPC with Lake Cobbessseeconte (Manchester, Maine as well). Also any PPC with rural railroad scenes as well as RPO covers in the lower price range. Gary Clark, 3607 Landings Way Dr., Apt. 107, Tampa, FL 33624. (4-01)

Wanted: Postal history of Pitcairn Island in the South Pacific, St. Pierre & Miquelon and Newfoundland. Some stamps also needed. Let me know if you have anything to offer. Everett L. Parker, HC 76, Box 32, Greenville, ME 04441 (4-01)

FOR SALE

Precancel approvals: town and types 15¢, classics, 1922-26 general, bicents, prexies, perfins available. Buro approvals starting at 10¢ each. Good mixed precancel lots. 2,000-\$35.00; 10,000-\$145.00. Mixed buros, 2,000-\$35.00, 10,000-\$145.00. Dick Laetsch, 108 Ashswamp Road, Scarborough, ME 04074. e-mail: precancel@aol.com; website: www.precanceledstamps.com (4-01)
For sale: DPO, Macy, ME - Doane 1906 on PPC, Rarity 8. First \$75.00 takes it. Carl A. Burnham, RR1, Box 559, Limington, ME 04046. Telephone 637-2871. (4-01)

For sale -- helping friend dispose of father's collection. Sheets, blocks, booklets, assorted postage at face. Airmail, singles, blocks half of catalogue value. Mint postal cards, postal reply cards. Please ask by Scott number. Charles Boudreau, 37 Center St., P.O. Box 498, Machias, ME 04654-0498. Telephone 255-3918. (2-02).

LETTERS

To the Editor:

I plan to exhibit covers and other items from my collection of airship posts at the Ellsworth show on August 3. I have good coverage from pre-World War II German commercial zeppelins through the Hindenburg disaster of 1937, including many covers carried aboard *Graf Zeppelin* on its 1929 "round the world" flight.

Health problems earlier in the year prevented me from contacting the *Titanic* postcard illustrated in *The Maine Philatelist* (January 2001). It is a good card, of which I have seen quite a few, and a sharp cancel. However, the written message dated April 15, 1912 is open to question. *Titanic* went down about 3:00 a.m. that very morning. The rescue ship *Carpathia* arrived at daylight to pick up as many survivors as possible. Captain Rostron of the *Carpathia* had no way of knowing if there were other survivors and probably did not know the total number of passengers and crew on *Titanic*. (*Carpathia* belonged to the rival Cunard Line.)

The *New York Times* of April 16, based on its many news sources, reported a loss of 1,250 persons. It is highly improbable that an individual in Waltham, Massachusetts could state the 1,500 loss, close to the actual figure, so positively, on the same day the *Titanic* sank.

I do have a nice post card cancel from Maine of April 15, 1912, but completely unrelated to the tragedy.

Thurlow Pitts
Stonington

To the Editor:

Members of The Perfin Club are trying to get information on Arthur F. Simionscu of Hackensack, New Jersey. Apparently he was a stamp dealer circa 1915-1930. He apparently dealt in perfins, among other things. He may have used the perfin S&F on self-addressed, pre-printed covers.

Anyone having information, or covers with that perfin, is asked to get in touch with me.

Vince McDermott
53 Willow Grove Rd.
Brunswick, ME 04011

Maine Philatelic Society
719 Moosehead Lake Rd.
Greenville, ME 04441-9727

TO:

IMPORTANT NOTICE:

If (6-01) appears after your name on the mailing label, it's time to renew your dues!

